



Republic of the Lao People's Democratic Republic  
Independence Independence Unity Democracy Permanence



Ministry Of Public Works And Transport

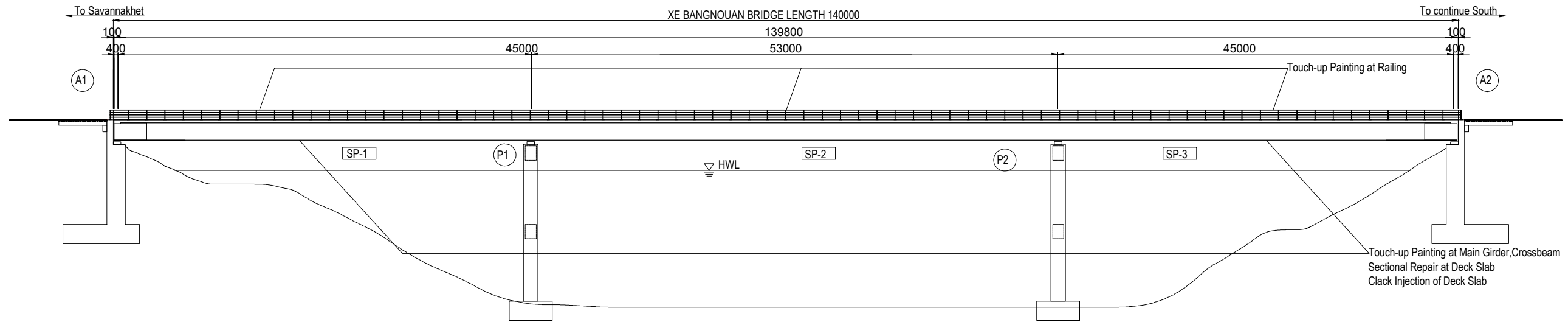
Department Of Road

Project for Capacity Development on Bridge Maintenance and Management  
(JICA-BMM) in Lao PDR

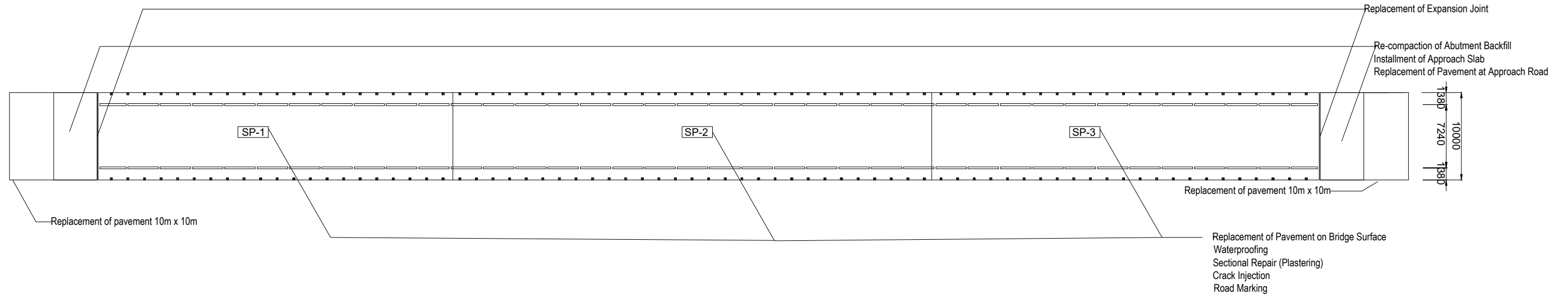
# Asbuilt Drawing

FOR XE-BANGNOUAN BRIDGE

# GENERAL DRAWING OF BRIDGE REPAIR AND REINFORCEMENT OF XE BANGNOUAN BRIDGE



PLAN VIEW s=1:500



Cross Section of Superstructure s=1:200

Table of Item

	Item	Element	Remarks
Bridge Repair and Reinforcement	Touch-up Painting	Main Girder / Crossbeam / Railing	Patinalock, Termarust / Preventive Maintenance
	Crack Injection	RC Deck Slab / Abutment / Wheel Guard	Epoxy Resin
	Sectional Repair (Plastering)	RC Deck Slab	Polymer Cement Mortar
	Waterproofing	Bridge Surface	Painting System
	Replacement of Pavement	Bridge Surface / Approach Road	Bridge Surface: Polymer Modified Asphalt / Approach Road: Straight Asphalt
	Re-compaction	Abutment Backfill	
	Installment of Approach Slab	Approach Slab	
	Replacement of Expansion Joint	Expansion Joint	
New Construction	Cleaning at Bearing Seat	Bearing	
	Road Marking		
	Installment of Lightening		

Note: Dimensions are currently tentative value and to be updated based on site inspection.



CHALERNCHAI CONSTRUCTION-REPAIR IRRIGATION,  
ROADS BRIDGE AND HOMESTEAD SOLE CO., LTD

TITLE	NAME	SIGNATURE
PREPARED BY		
CHECKED BY		
APPROVED BY		



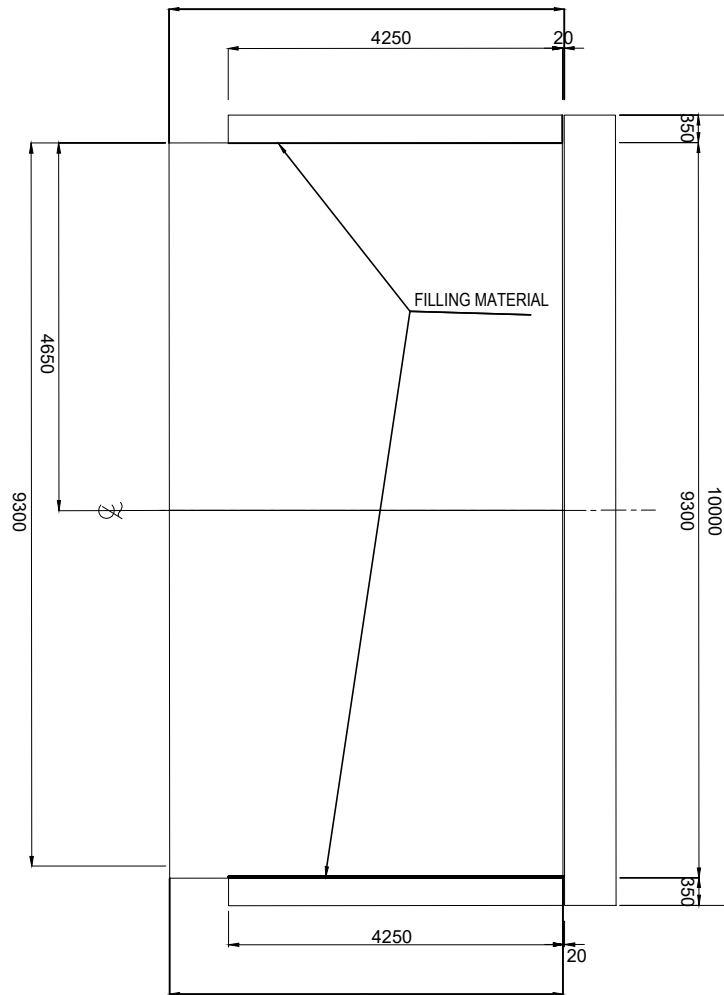
THE LAO PEOPLE'S DEMOCRATIC REPUBLIC  
MINISTRY OF PUBLIC WORKS AND TRANSPORT

THE PROJECT FOR CAPACITY DEVELOPMENT ON BRIDGE  
MAINTENANCE AND MANAGEMENT

DRAWING TITLE:  
GENERAL DRAWING OF BRIDGE REPAIR AND  
REINFORCEMENT OF XE BANGNOUAN BRIDGE

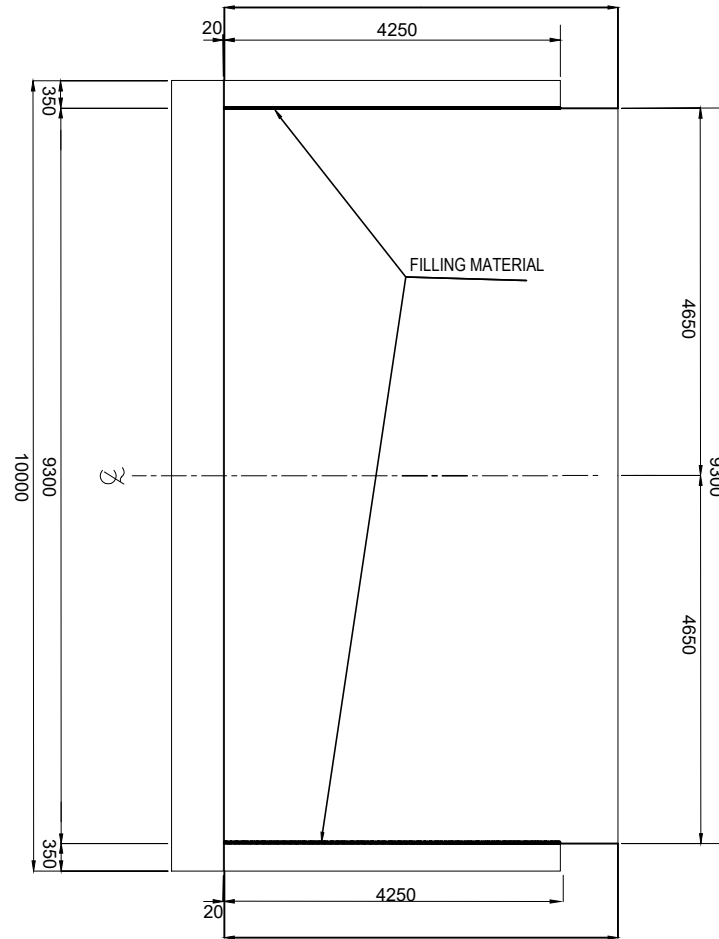
REV. No.	DATE	DESCRIPTION	SCALE:
002:	22 April 2023:	As-Built Drawing	
-	-	-	DRAWING No.:
-	-	-	101

PLAN OF STRUCTURE(A1) S=1/50

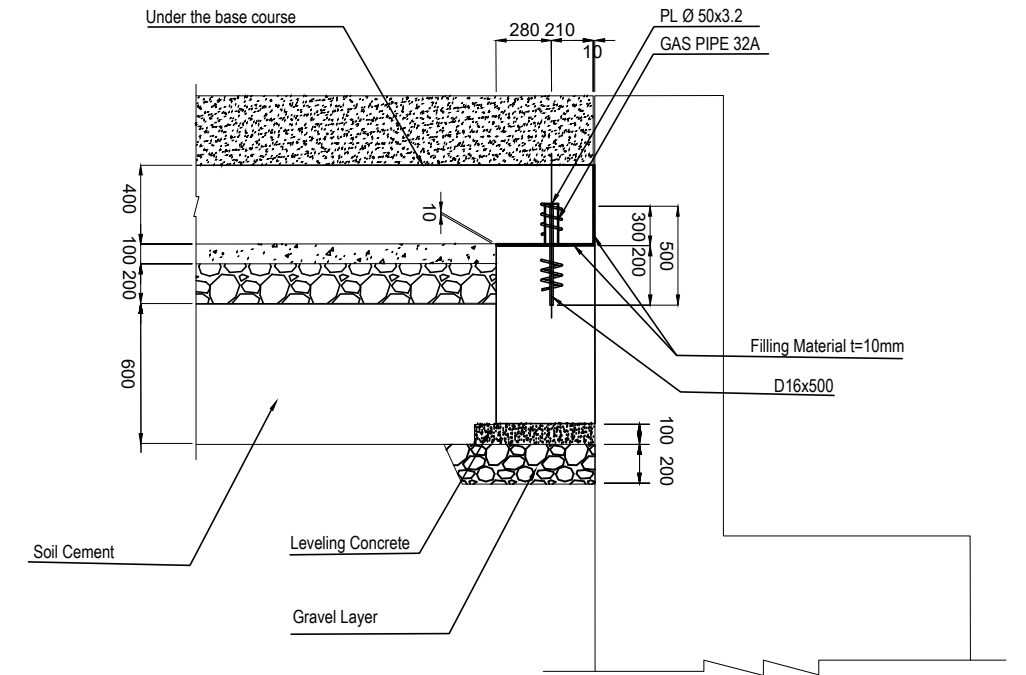


APPROACH SLAB

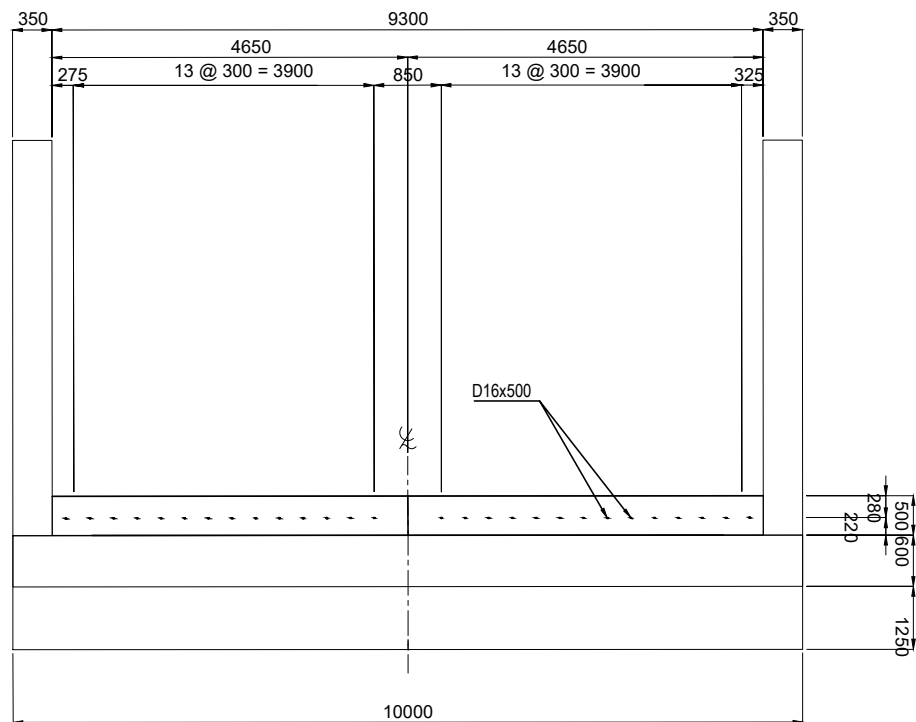
PLAN OF STRUCTURE(A2) S=1/50



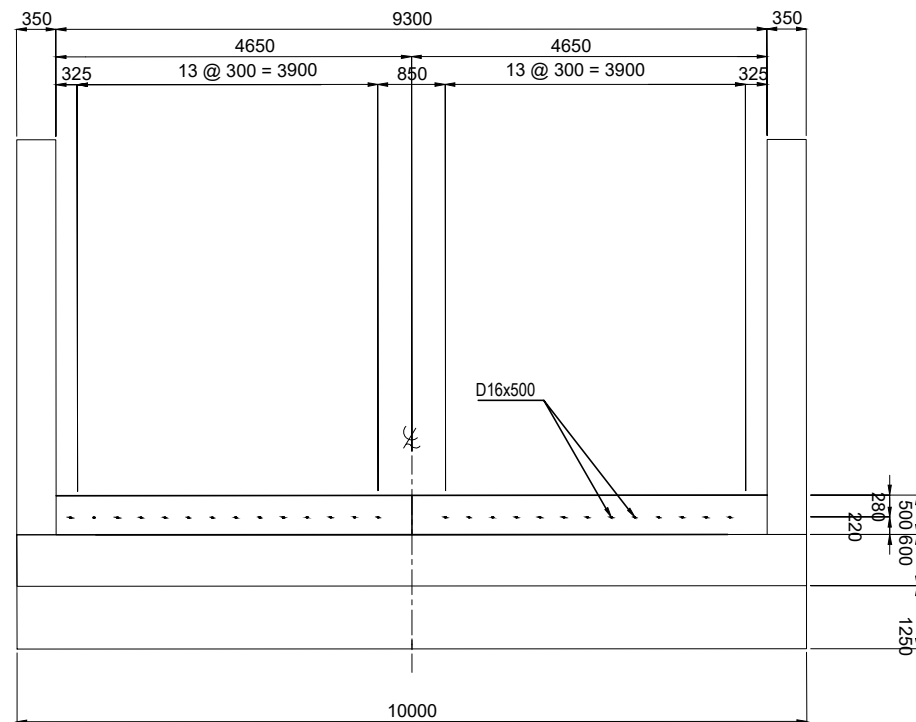
DETAIL OF ANCHOR S=1/20



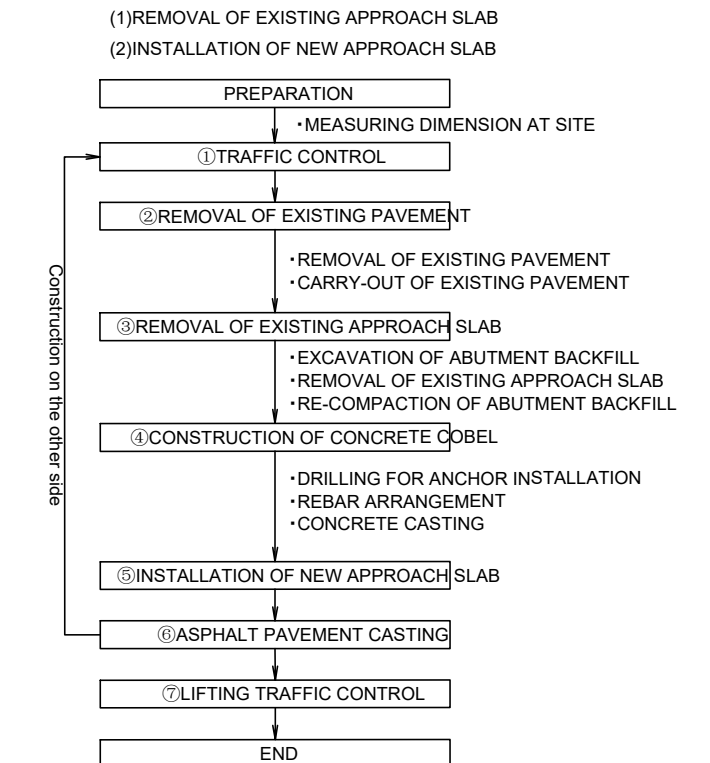
PLAN OF SHOE(A1) S=1/50



PLAN OF SHOE(A2) S=1/50



CONSTRUCTION FLOWCHART FOR REPLACEMENT OF APPROACH SLAB



NOTE: In order to secure traffic, construction will be done in half.



CHALERNCHAI CONSTRUCTION-REPAIR IRRIGATION,  
ROADS BRIDGE AND HOMESTEAD SOLE CO., LTD

TITLE	NAME	SIGNATURE
PREPARED BY		
CHECKED BY		
APPROVED BY		



THE LAO PEOPLE'S DEMOCRATIC REPUBLIC  
MINISTRY OF PUBLIC WORKS AND TRANSPORT

THE PROJECT FOR CAPACITY DEVELOPMENT ON BRIDGE  
MAINTENANCE AND MANAGEMENT  
DRAWING TITLE:  
GENERAL DRAWING OF BRIDGE REPAIR AND  
REINFORCEMENT OF XE BANGNOUAN BRIDGE

REV. No.	DATE	DESCRIPTION	SCALE:
002:	22 April 2023:	As-Built Drawing	
-	-	-	
-	-	-	
-	-	-	

DRAWING No.: 102

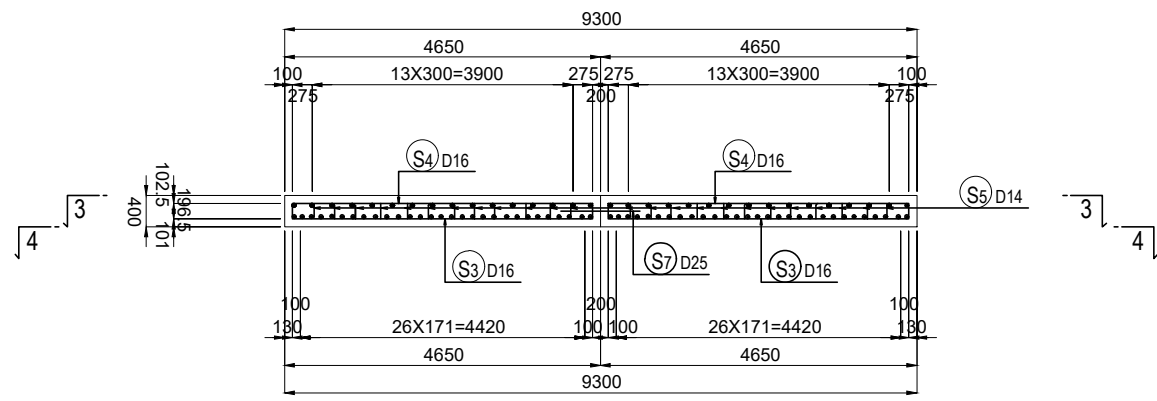
# Bar Arrangement of Approach Slab

S=1:50

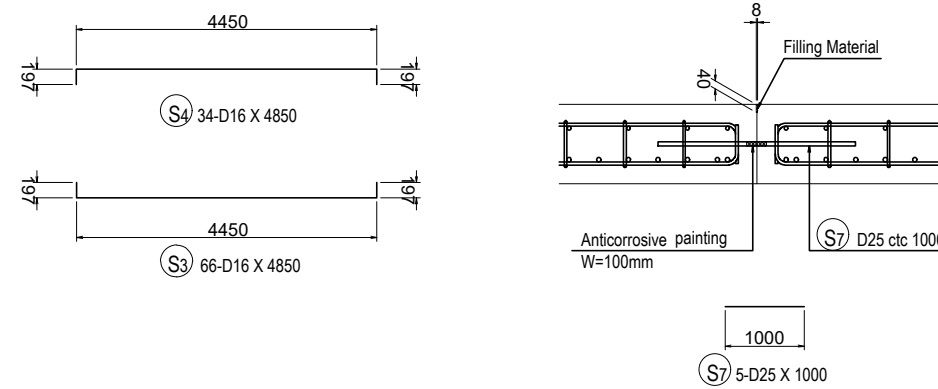
## Bar Quantity

Type	Dia.	Length	Number	Unit Weight	Weight for 1 Bar	Total Weight	Remarks
S 1	D25	5120	54	3.86	19.76	1,067.04	
S 2	D20	5120	32	2.47	12.65	404.80	
S 3	D16	4850	66	1.56	7.57	499.38	—
S 4	D16	4850	34	1.56	7.57	257.24	—
S 5	D14	620	420	1.21	0.75	315	⌋
S 6	D10	970	24	0.560	0.54	13	⋮
S 7	D25	1000	5	3.86	3.86	19.30	—
						2543.44	
(SD345)	Total D25			1,067.04kg			
"	D20			404.80 kg			
"	D16			756.6 kg			
"	D14			315 kg			
"	D10			13 kg			
Total Weight				2557kg			

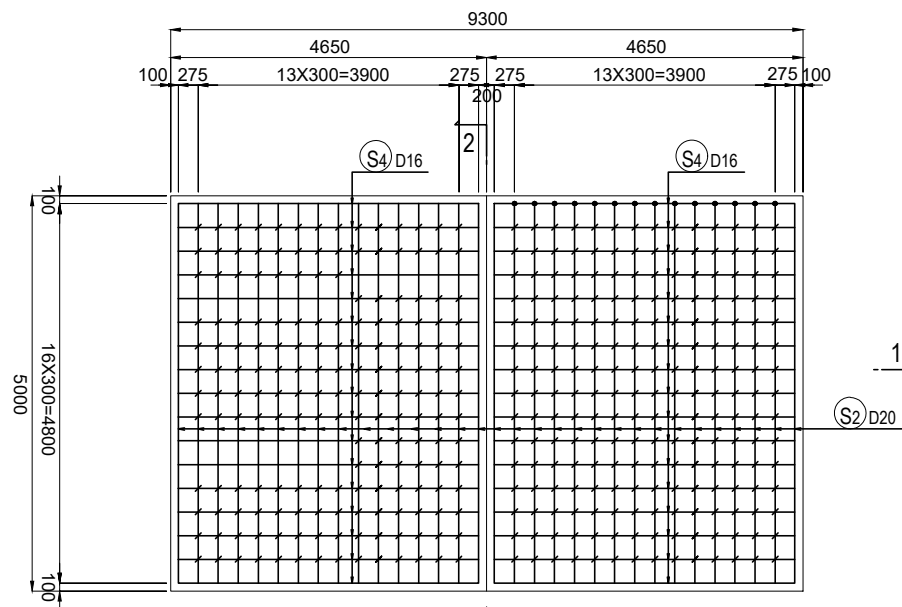
1-1



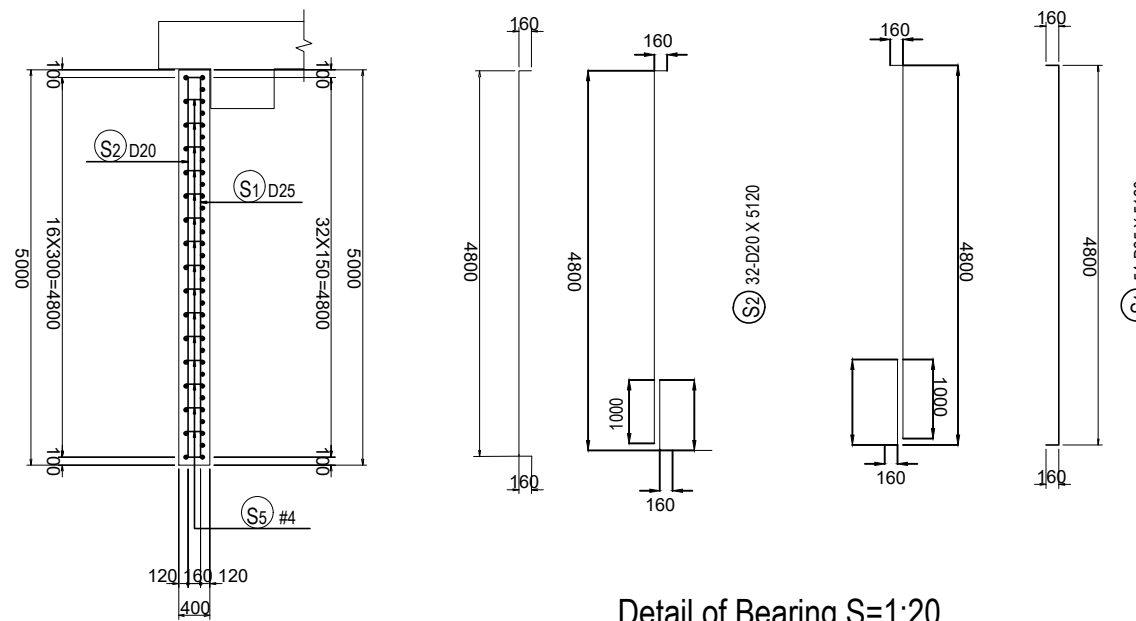
## Detail of Connection S=1:20



3-3



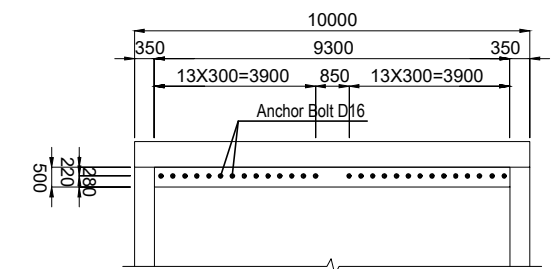
2-2



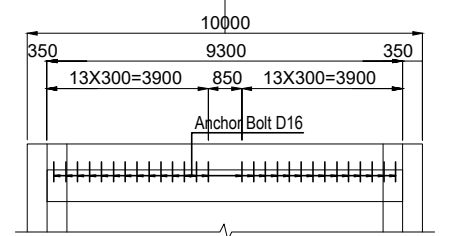
## Anchor Bar Arrangement

S=1:100

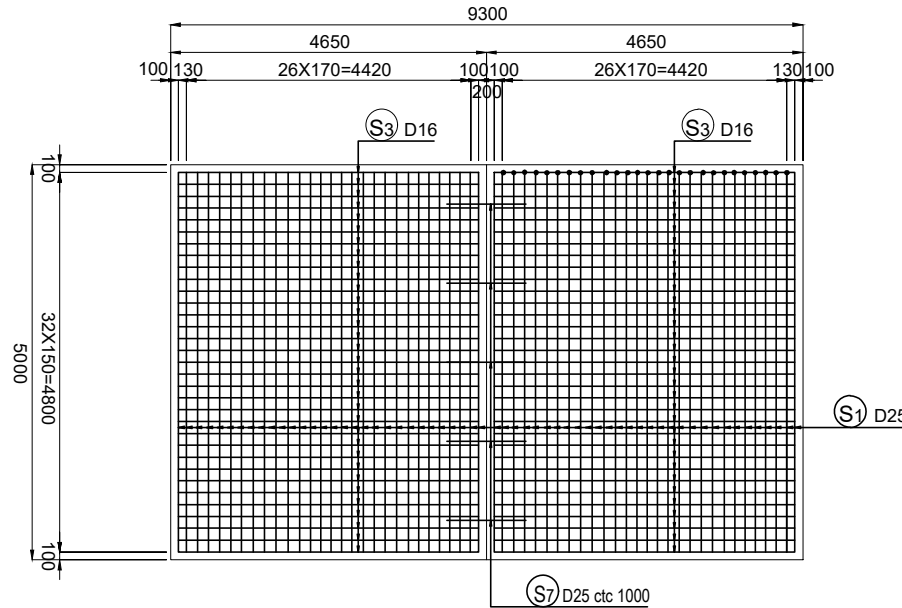
### Plan View



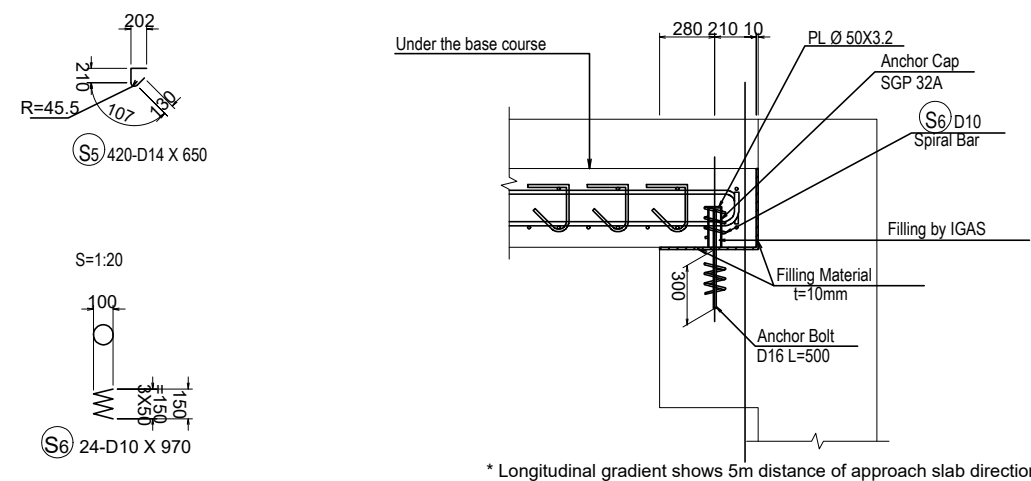
### Back View



4-4

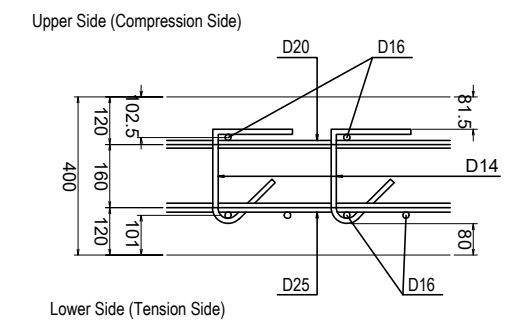


## Detail of Bearing S=1:20



## Detail of Concrete Cover

Longitudinal Direction S=1:10



\* Longitudinal gradient shows 5m distance of approach slab direction



CHALERNCHAI CONSTRUCTION-REPAIR IRRIGATION,  
ROADS BRIDGE AND HOMESTEAD SOLE CO., LTD

TITLE	NAME	SIGNATURE
PREPARED BY		
CHECKED BY		
APPROVED BY		



THE LAO PEOPLE'S DEMOCRATIC REPUBLIC  
MINISTRY OF PUBLIC WORKS AND TRANSPORT

THE PROJECT FOR CAPACITY DEVELOPMENT ON BRIDGE  
MAINTENANCE AND MANAGEMENT

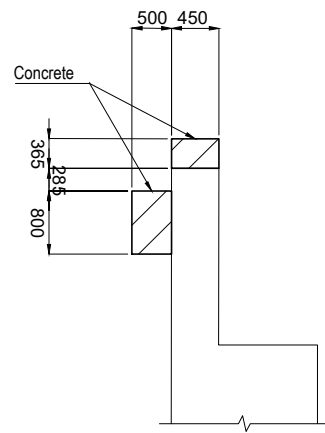
DRAWING TITLE:  
GENERAL DRAWING OF BRIDGE REPAIR AND  
REINFORCEMENT OF XE BANGNOUAN BRIDGE

REV. No.	DATE	DESCRIPTION	SCALE:
002:	22 April 2023:	As-Built Drawing	
-	-	-	
-	-	-	
-	-	-	

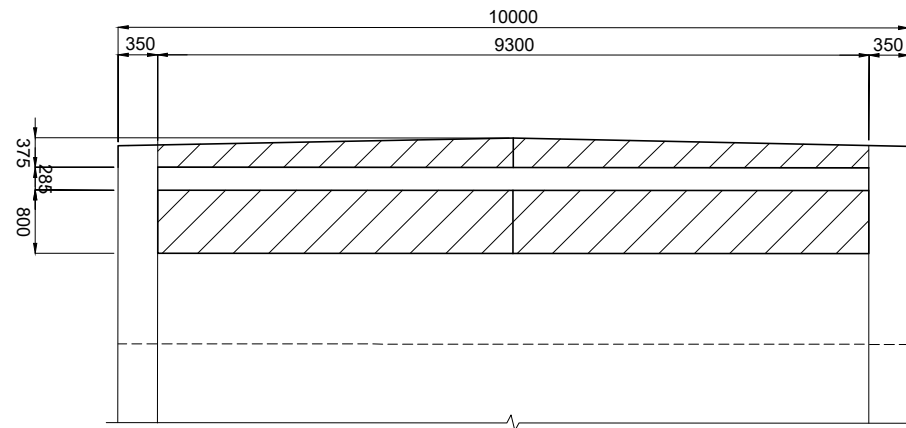
DRAWING No.:  
103

# CONCRETE CASTING OF CONCRETE COBEL AND PARAPET S=1/50

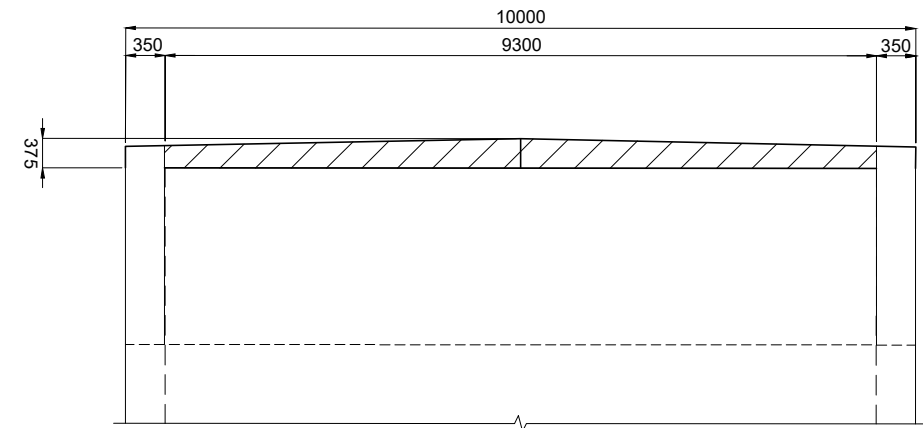
1-1



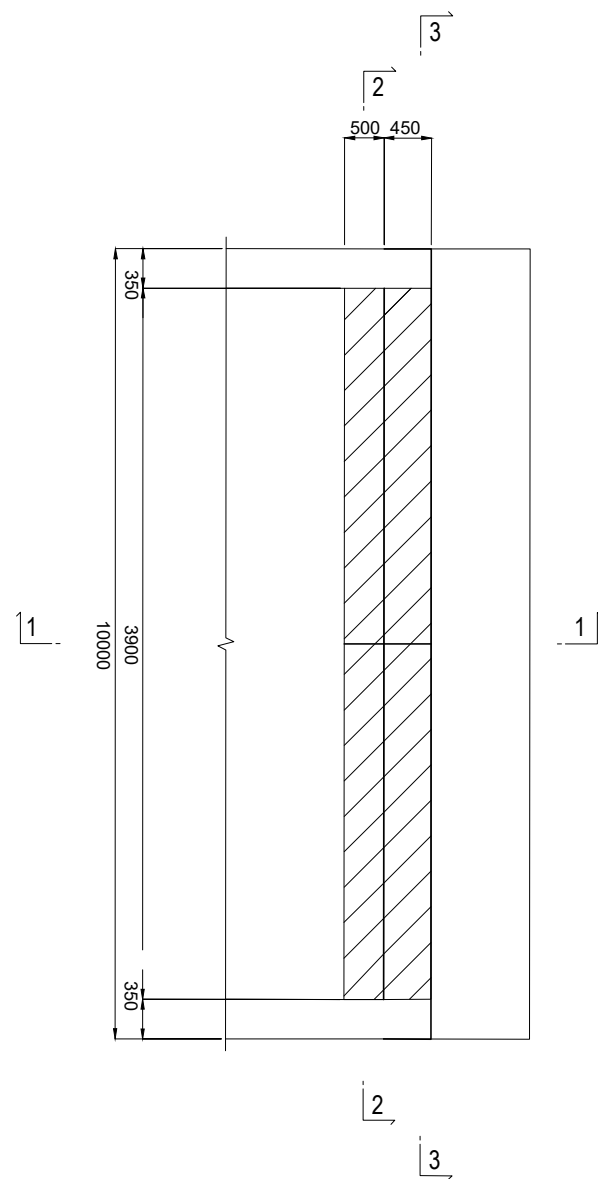
2-2



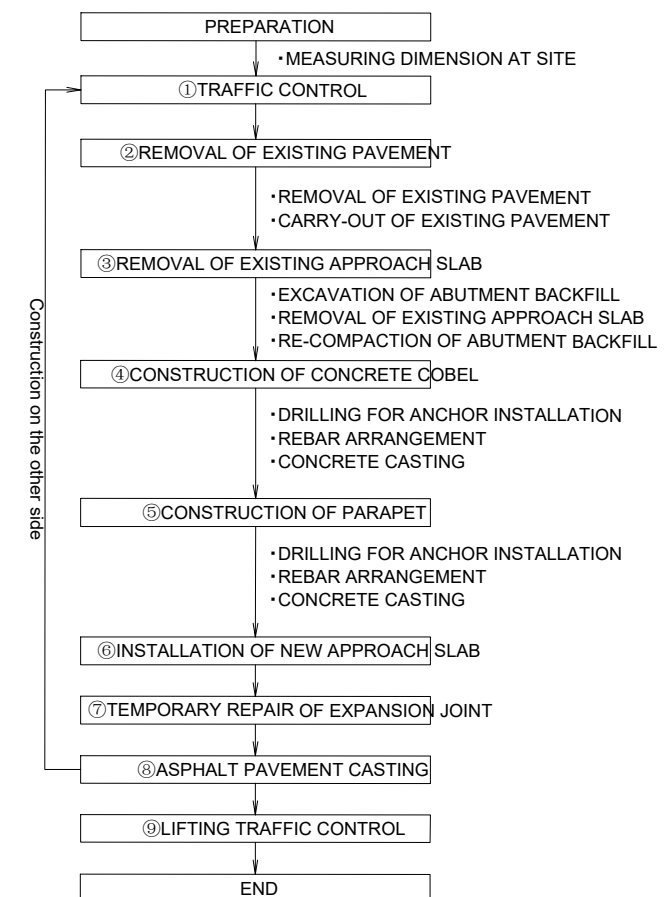
3-3



PLAN



## CONSTRUCTION FLOWCHART FOR CONCRETE CASTING OF CONCRETE COBEL AND PARAPET



NOTE: In order to secure traffic, construction will be done in half.



CHALERNCHAI CONSTRUCTION-REPAIR IRRIGATION,  
ROADS BRIDGE AND HOMESTEAD SOLE CO., LTD

TITLE	NAME	SIGNATURE
PREPARED BY		
CHECKED BY		
APPROVED BY		



THE LAO PEOPLE'S DEMOCRATIC REPUBLIC  
MINISTRY OF PUBLIC WORKS AND TRANSPORT

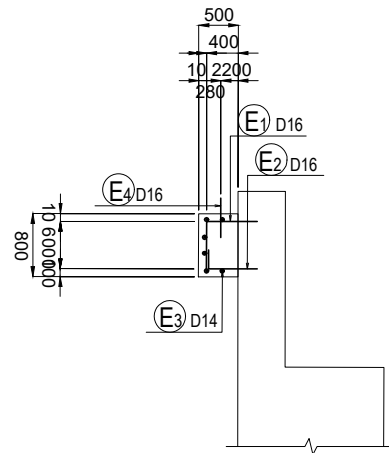
THE PROJECT FOR CAPACITY DEVELOPMENT ON BRIDGE  
MAINTENANCE AND MANAGEMENT  
DRAWING TITLE:  
GENERAL DRAWING OF BRIDGE REPAIR AND  
REINFORCEMENT OF XE BANGNOUAN BRIDGE

REV. No.	DATE	DESCRIPTION	SCALE:
002:	22 April 2023:	As-Built Drawing	
-	-	-	
-	-	-	
-	-	-	

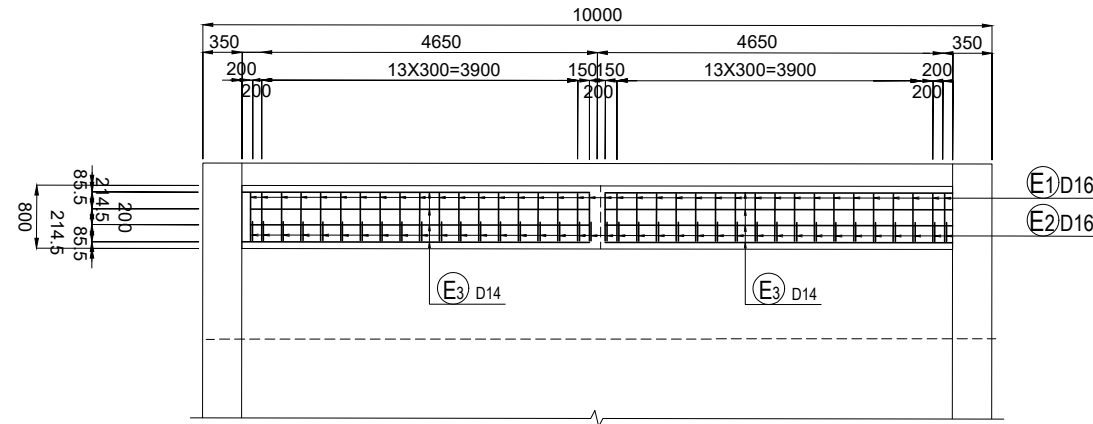
DRAWING No.: 104

# BAR ARRANGEMENT OF CONCRETE COBEL S=1/50

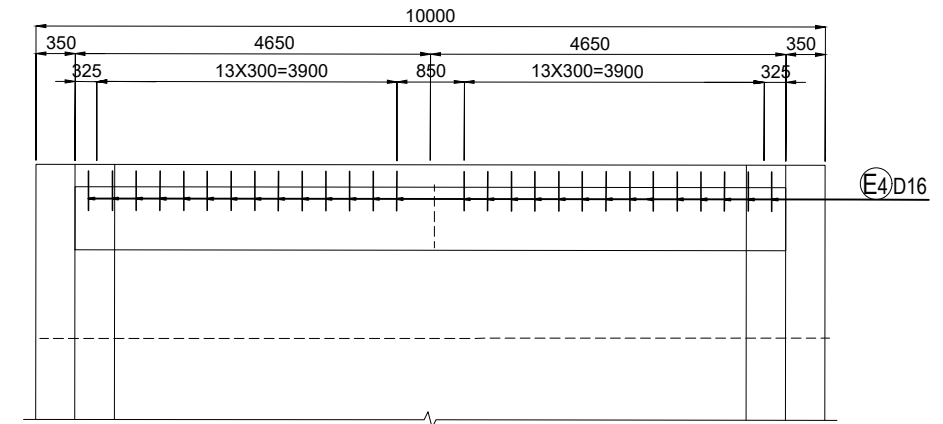
1-1



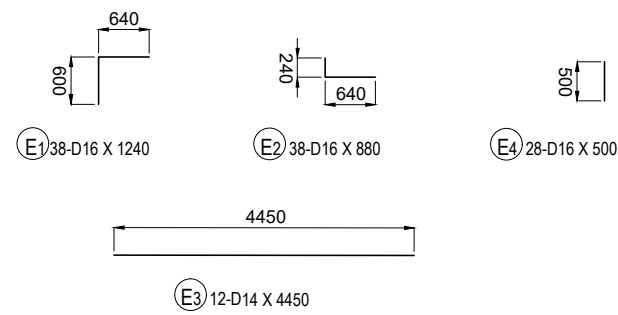
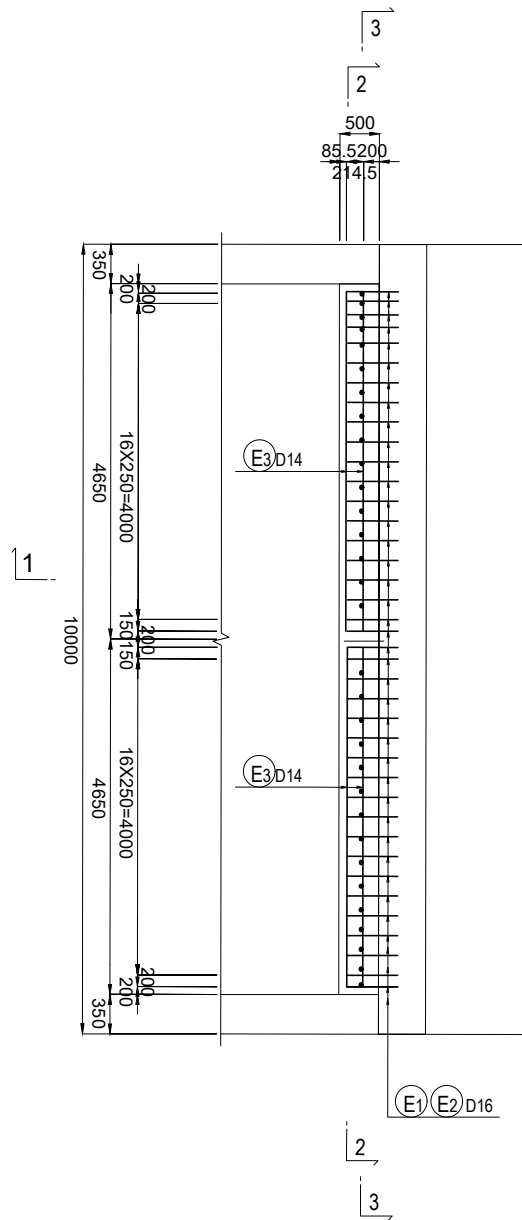
2-2



3-3



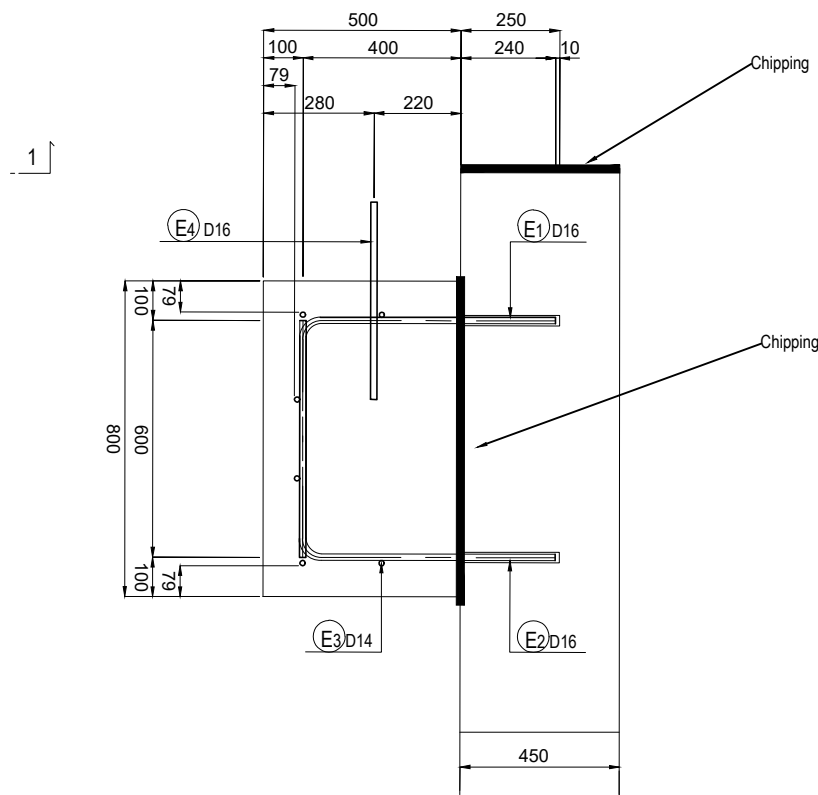
PLAN



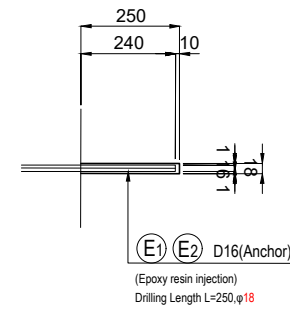
Bar Quantity

Type	Dia.	Length	Number	Unit Weight	Weight for 1 Bar	Total Weight	Remarks
E 1	D16	1240	38	1.56	1.93	73.34	┌
E 2	D16	880	38	1.56	1.37	52.06	└
E 3	D14	4450	12	1.21	5.385	64.614	—
E 4	D16	500	24	1.56	0.78	19	┆
209.014							
				(SD345)	Total D16	144.4 kg	
					D14	64.614 kg	
				Total Weight	209.014 kg		

Detail of Concrete Cover S=1:10



Detail of Concrete Drilling S=1:10



CHALERNCHAI CONSTRUCTION-REPAIR IRRIGATION,  
ROADS BRIDGE AND HOMESTEAD SOLE CO., LTD

TITLE	NAME	SIGNATURE
PREPARED BY		
CHECKED BY		
APPROVED BY		



THE LAO PEOPLE'S DEMOCRATIC REPUBLIC  
MINISTRY OF PUBLIC WORKS AND TRANSPORT

THE PROJECT FOR CAPACITY DEVELOPMENT ON BRIDGE  
MAINTENANCE AND MANAGEMENT

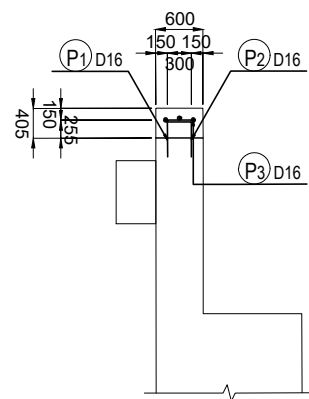
DRAWING TITLE:  
GENERAL DRAWING OF BRIDGE REPAIR AND  
REINFORCEMENT OF XE BANGNOUAN BRIDGE

REV. No.	DATE	DESCRIPTION	SCALE:
002:	22 April 2023:	As-Built Drawing	
-	-	-	
-	-	-	
-	-	-	

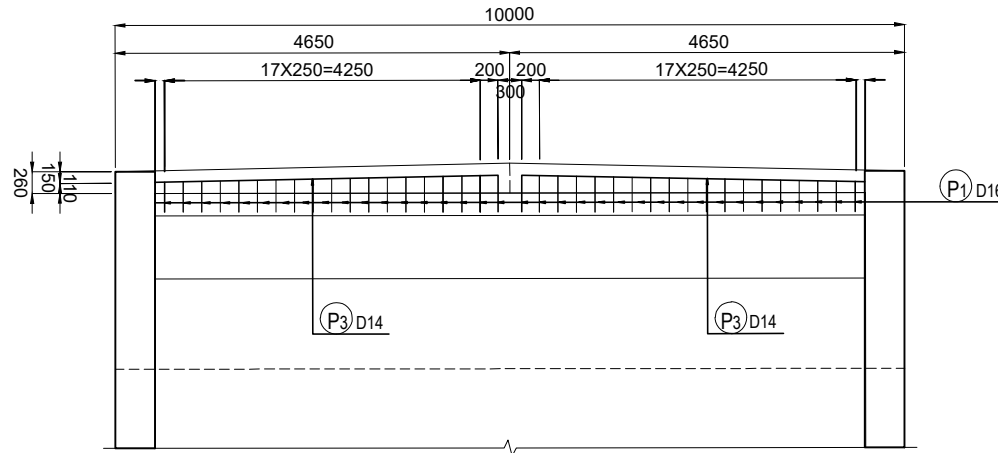
DRAWING No.: 105

# BAR ARRANGEMENT OF PARAPET S=1/50

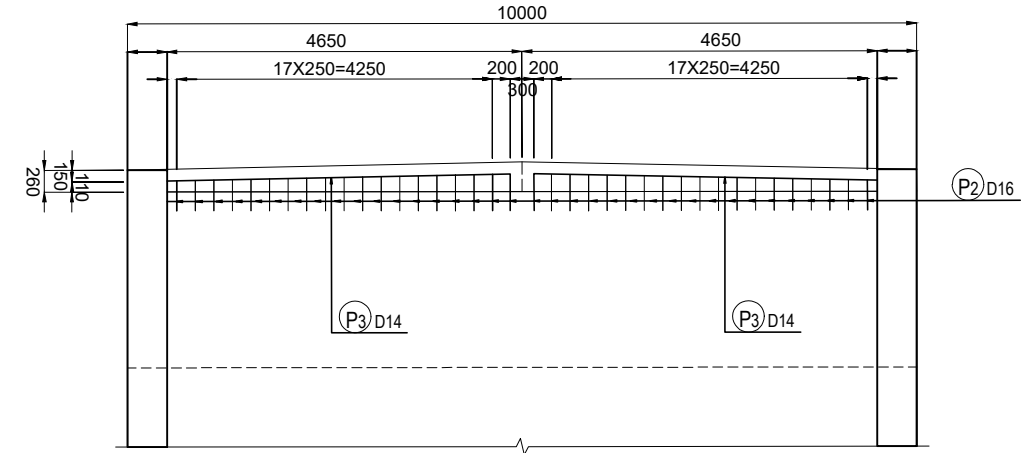
1-1



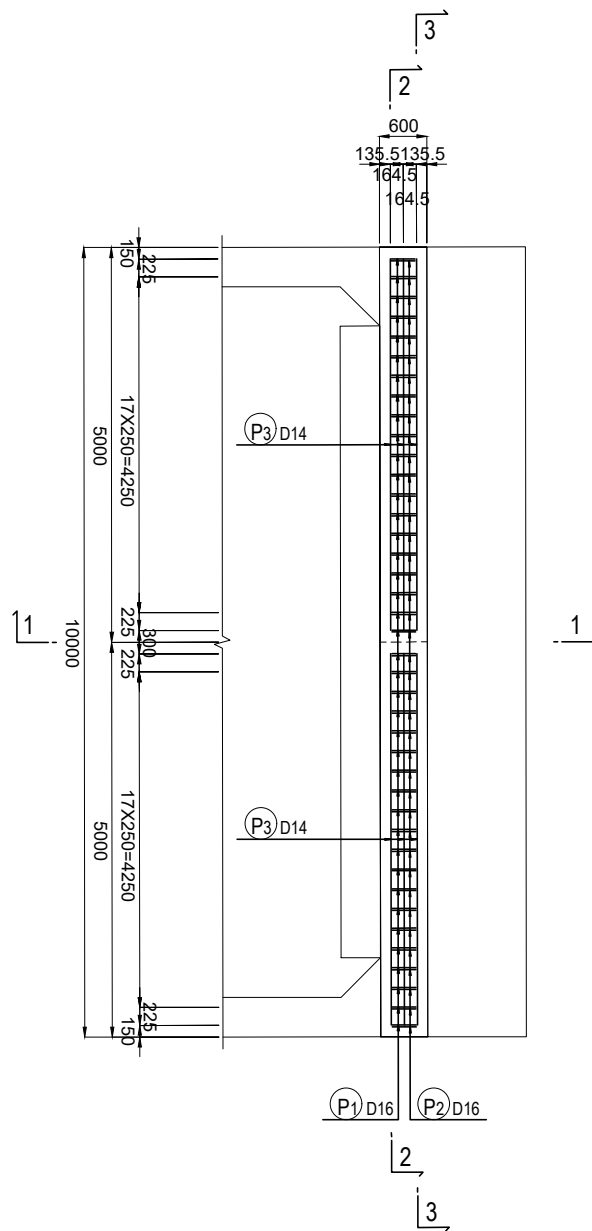
2-2



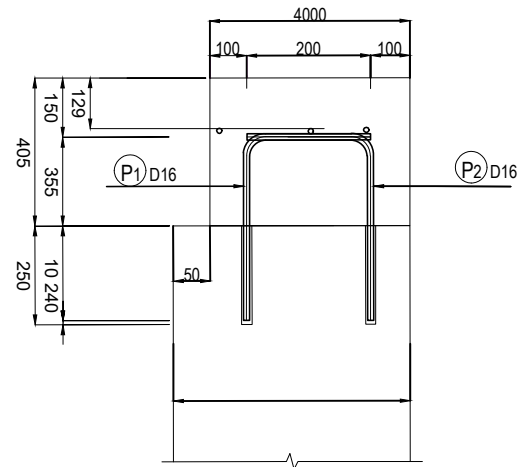
3-3



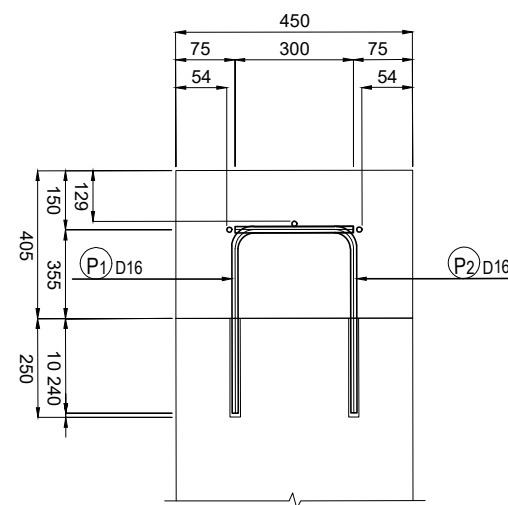
PLAN



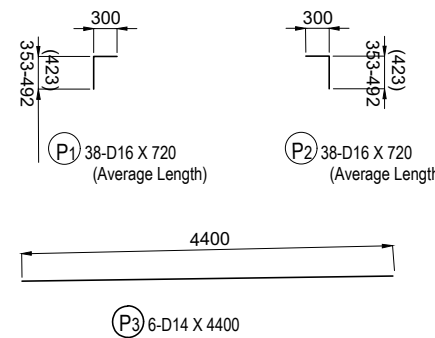
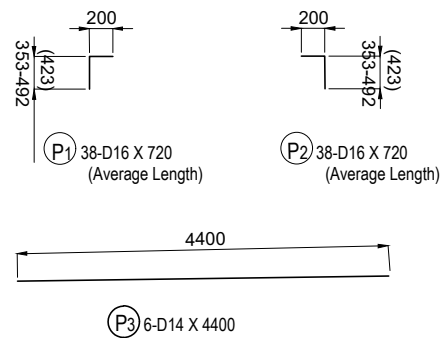
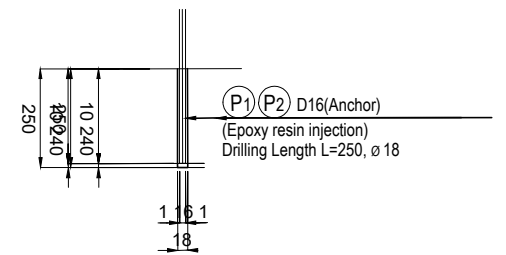
Detail of Concrete Cover S=1:10  
Abutment A1



Detail of Concrete Cover S=1:10  
Abutment A2



Detail of Concrete Drilling S=1:10



Bar Quantity

Type	Dia.	Length	Number	Unit Weight	Weight for 1 Bar	Total Weight	Remarks
P 1	D16	720	36	1.56	1.12	40.32	Γ(Average Length)
P 2	D16	720	36	1.56	1.12	40.32	Γ(Average Length)
P 3	D14	4400	6	1.21	5.324	31.94	—
						112.58	
(SD345)	Total D16			80.64 kg			
"	D14			31.94 kg			
Total Weight				112.58 kg			



CHALERNCHAI CONSTRUCTION-REPAIR IRRIGATION,  
ROADS BRIDGE AND HOMESTEAD SOLE CO., LTD

TITLE	NAME	SIGNATURE
PREPARED BY		
CHECKED BY		
APPROVED BY		



THE LAO PEOPLE'S DEMOCRATIC REPUBLIC  
MINISTRY OF PUBLIC WORKS AND TRANSPORT

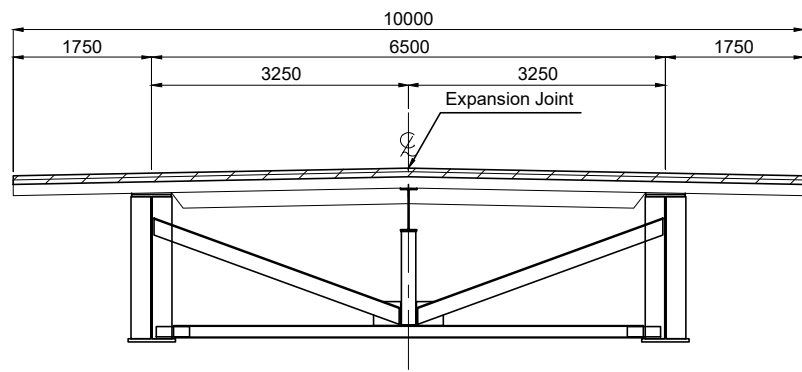
THE PROJECT FOR CAPACITY DEVELOPMENT ON BRIDGE  
MAINTENANCE AND MANAGEMENT  
DRAWING TITLE:  
GENERAL DRAWING OF BRIDGE REPAIR AND  
REINFORCEMENT OF XE BANGNOUAN BRIDGE

REV. No.	DATE	DESCRIPTION	SCALE:
002:	22 April 2023:	As-Built Drawing	
-			
-			
-			

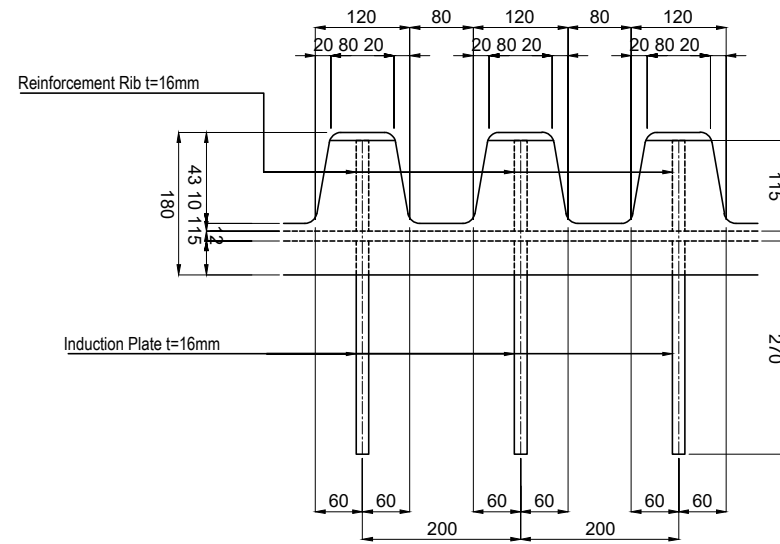
DRAWING No.: 106

# Expansion Joint(Movable side)

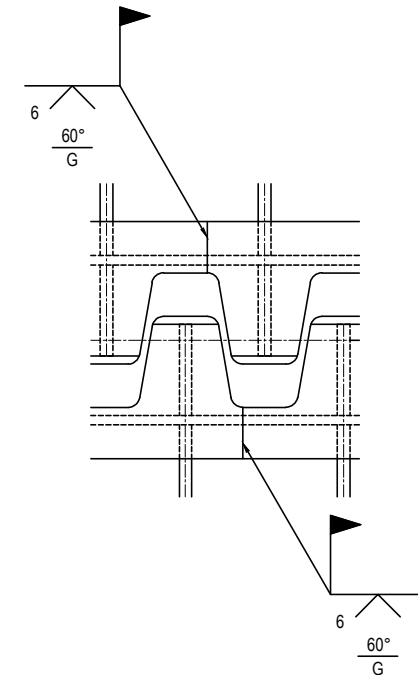
Cross Section S=1/50



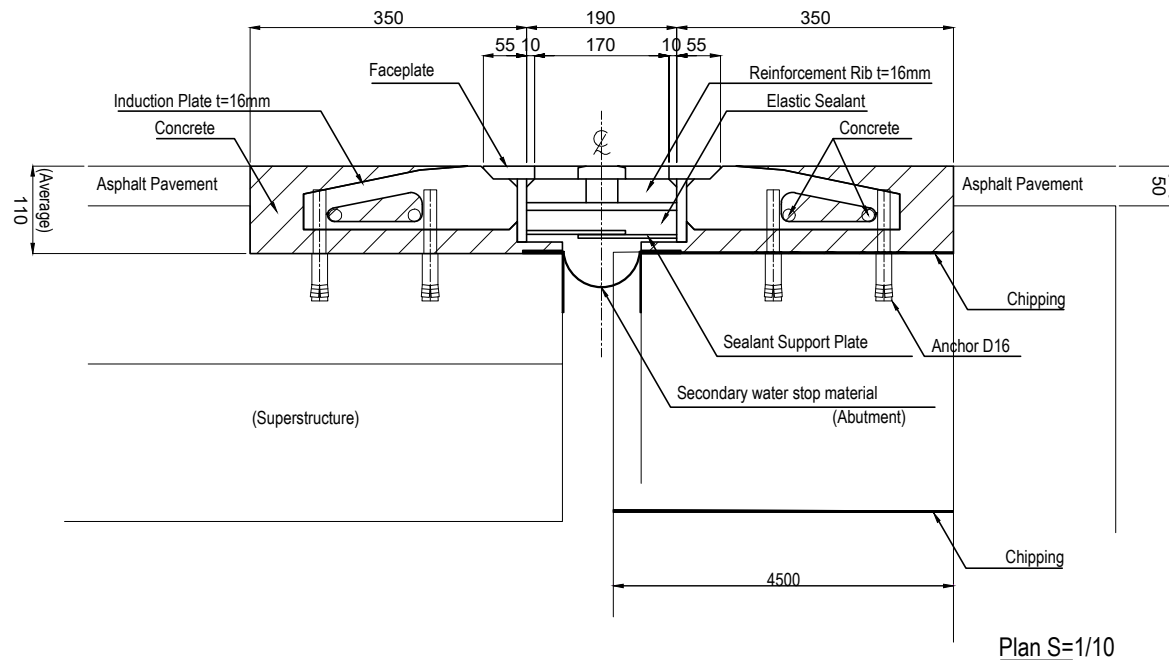
Detail of Faceplate S=1/5



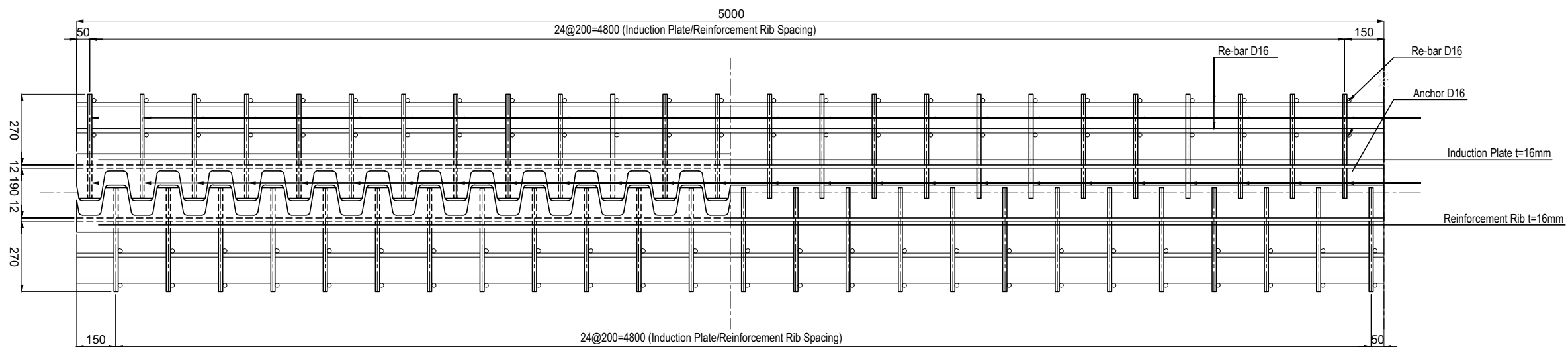
Detail of Welding S=1/5



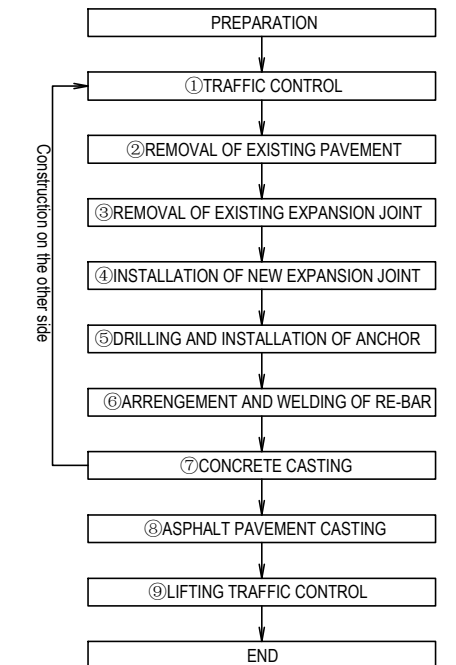
Detail of Expansion Joint S=1/5



Plan S=1/10



## CONSTRUCTION FLOWCHART FOR REPLACEMENT OF EXPANSION JOINT



NOTE: In order to secure traffic, construction will be done in half.



CHALERNCHAI CONSTRUCTION-REPAIR IRRIGATION,  
ROADS BRIDGE AND HOMESTEAD SOLE CO., LTD

TITLE	NAME	SIGNATURE
PREPARED BY		
CHECKED BY		
APPROVED BY		



THE LAO PEOPLE'S DEMOCRATIC REPUBLIC  
MINISTRY OF PUBLIC WORKS AND TRANSPORT

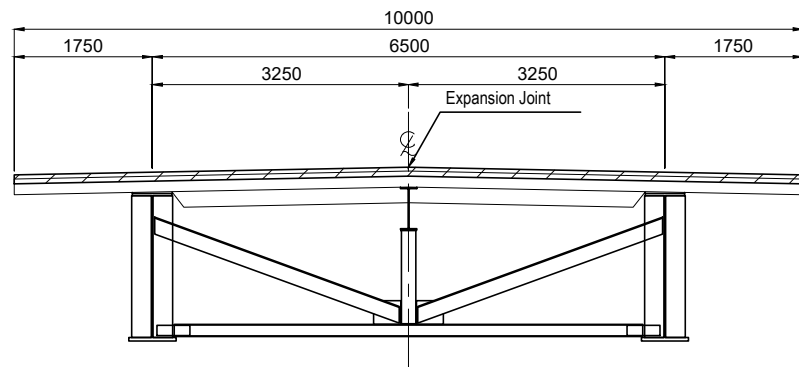
THE PROJECT FOR CAPACITY DEVELOPMENT ON BRIDGE  
MAINTENANCE AND MANAGEMENT  
DRAWING TITLE:  
GENERAL DRAWING OF BRIDGE REPAIR AND  
REINFORCEMENT OF XE BANGNOUAN BRIDGE

REV. No.	DATE	DESCRIPTION	SCALE:
002:	22 April 2023:	As-Built Drawing	
-			
-			
-			

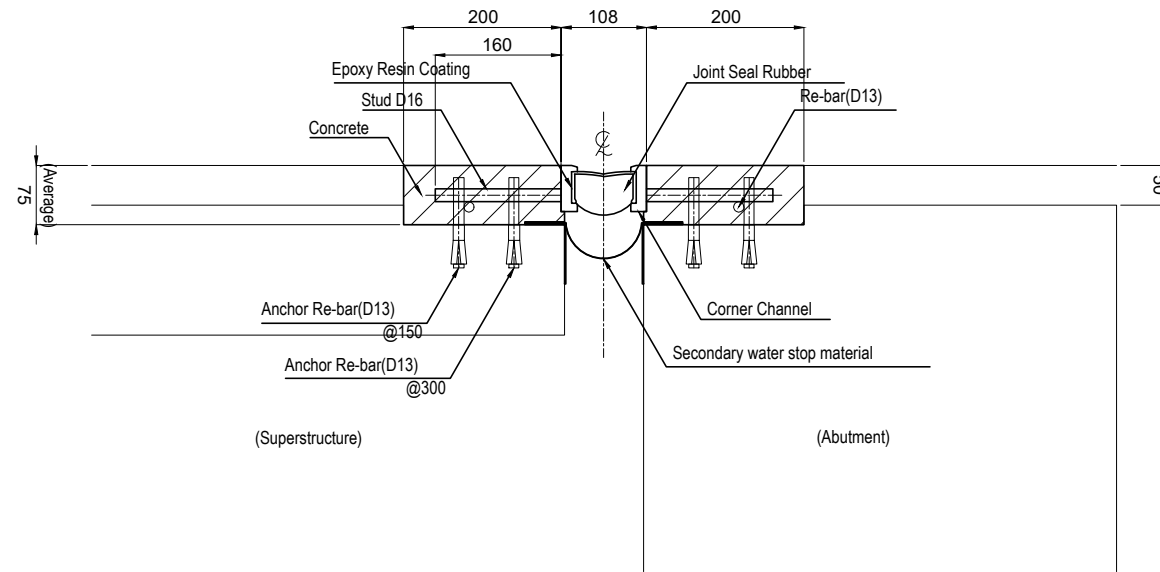
DRAWING No.: 107

# Expansion Joint(Fixed side)

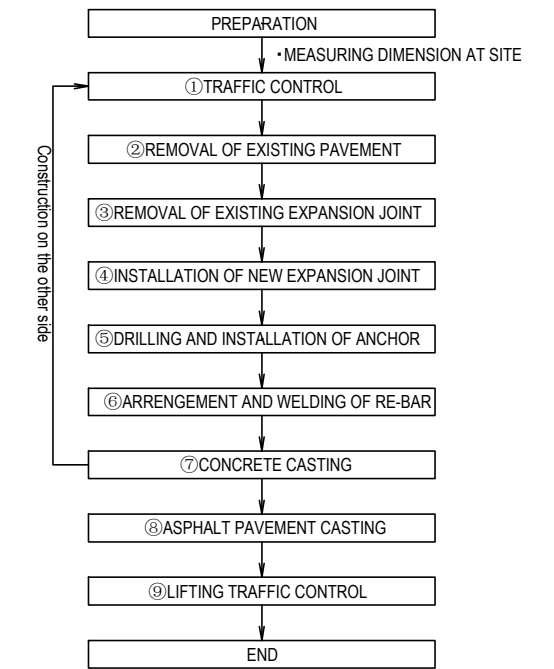
Cross Section S=1/50



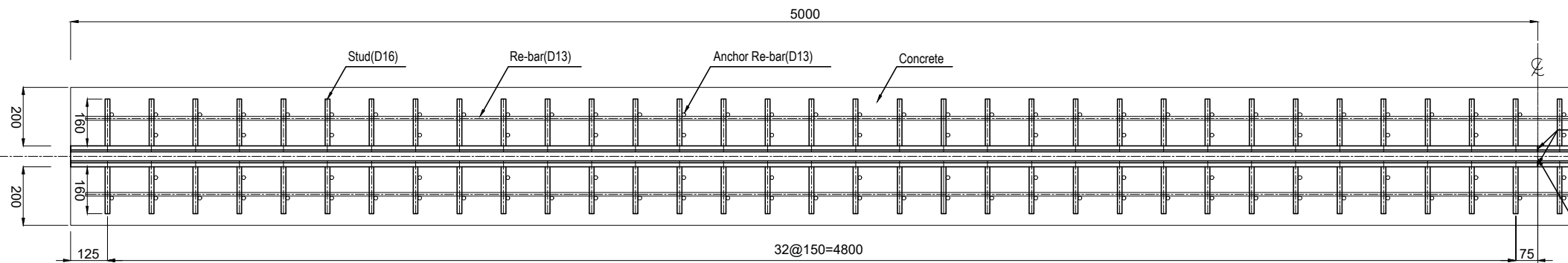
Detail of Expansion Joint S=1/5



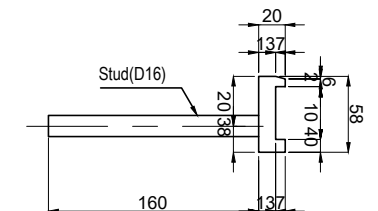
## CONSTRUCTION FLOWCHART FOR REPLACEMENT OF EXPANSION JOINT



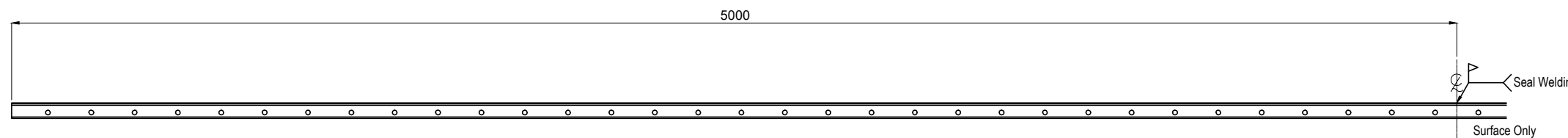
Plan S=1/10



Detail of Corner Channel S=1/3



Side View S=1/10



CHALERNCHAI CONSTRUCTION-REPAIR IRRIGATION,  
ROADS BRIDGE AND HOMESTEAD SOLE CO., LTD

TITLE	NAME	SIGNATURE
PREPARED BY		
CHECKED BY		
APPROVED BY		



THE LAO PEOPLE'S DEMOCRATIC REPUBLIC  
MINISTRY OF PUBLIC WORKS AND TRANSPORT

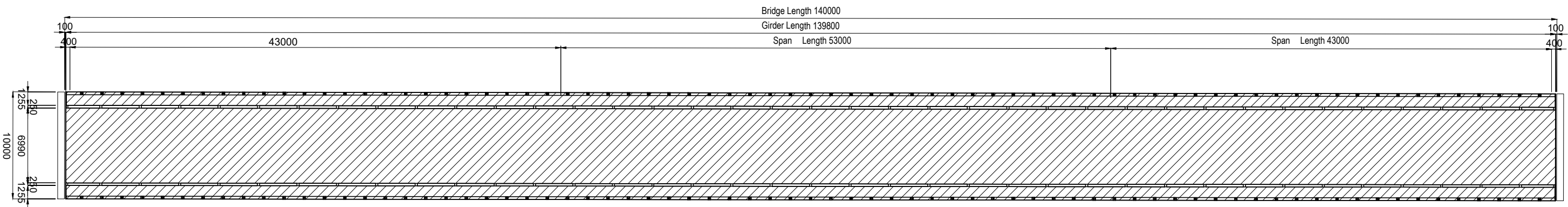
THE PROJECT FOR CAPACITY DEVELOPMENT ON BRIDGE  
MAINTENANCE AND MANAGEMENT  
DRAWING TITLE:  
GENERAL DRAWING OF BRIDGE REPAIR AND  
REINFORCEMENT OF XE BANGNOUAN BRIDGE

REV. No.	DATE	DESCRIPTION	SCALE:
002:	22 April 2023:	As-Built Drawing	
-			
-			
-			

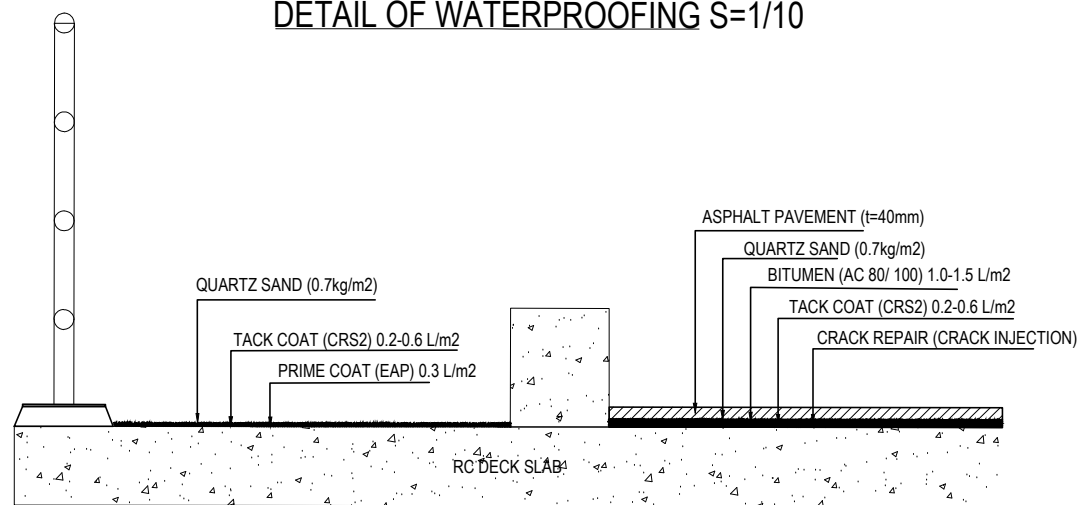
DRAWING No.: 108

# TOUCH-UP WATERPROOFING OF XE BANGNOUAN BRIDGE

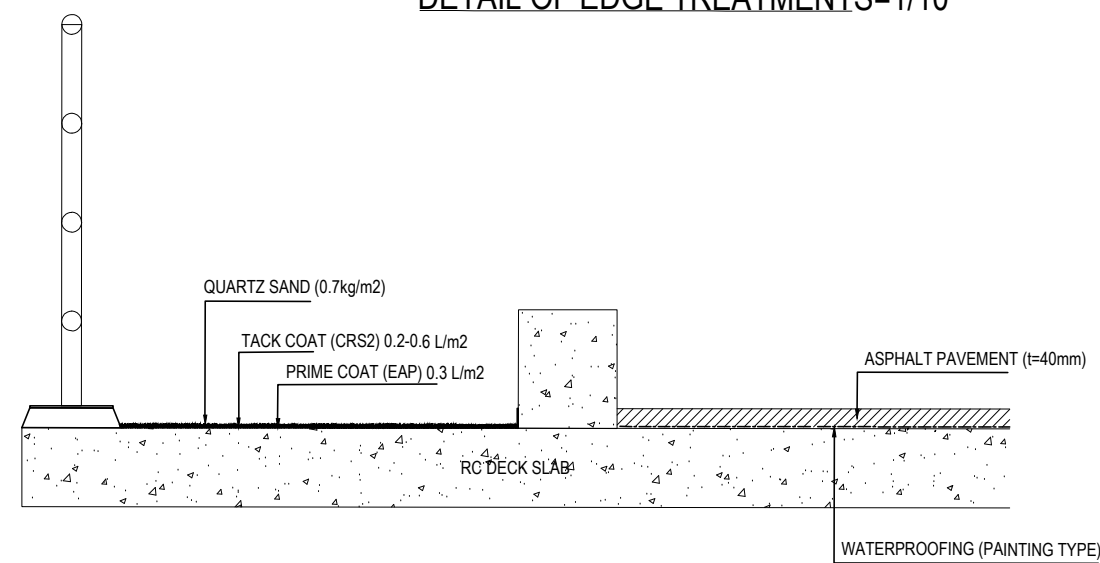
## PLAN OF WATERPROOFING S=1/200



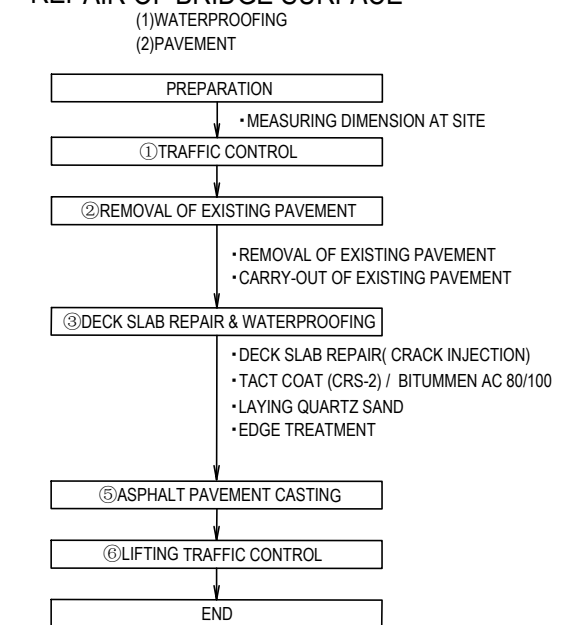
### DETAIL OF WATERPROOFING S=1/10



### DETAIL OF EDGE TREATMENTS=1/10



### CONSTRUCTION FLOWCHART FOR REPAIR OF BRIDGE SURFACE



CHALERNCHAI CONSTRUCTION-REPAIR IRRIGATION,  
ROADS BRIDGE AND HOMESTEAD SOLE CO., LTD

TITLE	NAME	SIGNATURE
PREPARED BY		
CHECKED BY		
APPROVED BY		



THE LAO PEOPLE'S DEMOCRATIC REPUBLIC  
MINISTRY OF PUBLIC WORKS AND TRANSPORT

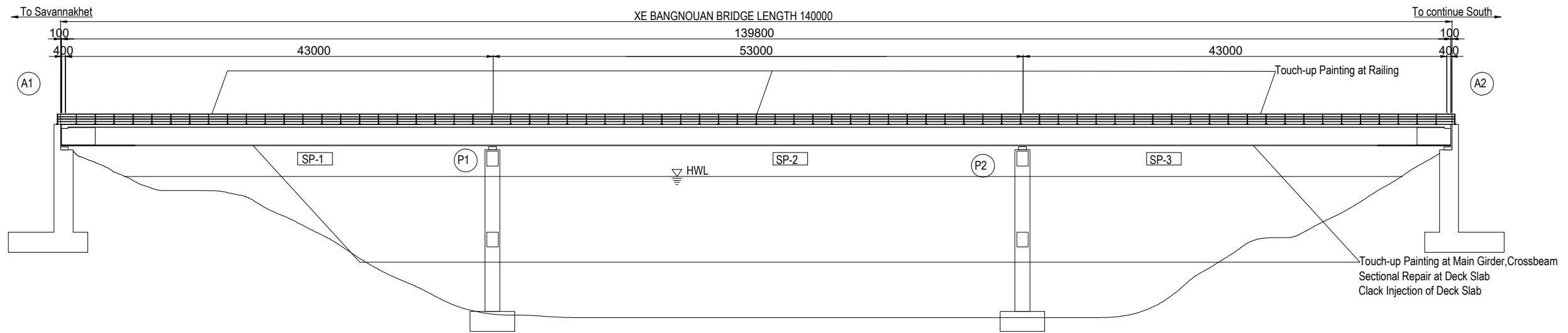
THE PROJECT FOR CAPACITY DEVELOPMENT ON BRIDGE  
MAINTENANCE AND MANAGEMENT

DRAWING TITLE:  
GENERAL DRAWING OF BRIDGE REPAIR AND  
REINFORCEMENT OF XE BANGNOUAN BRIDGE

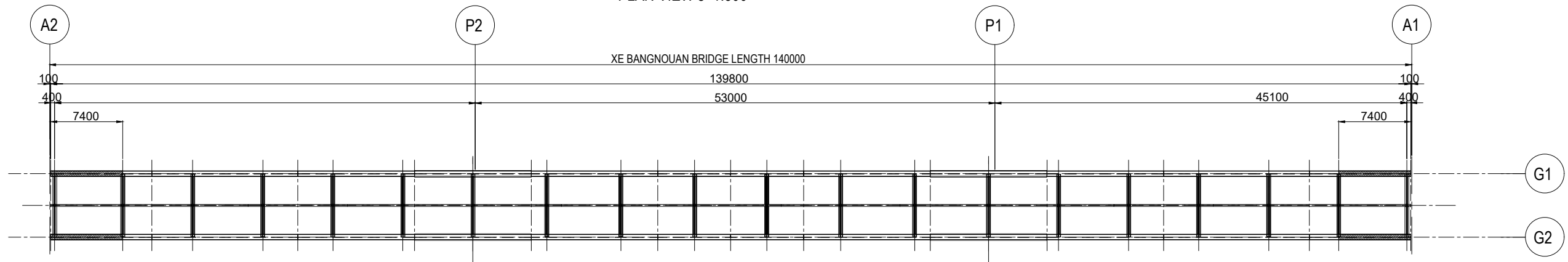
REV. No.	DATE	DESCRIPTION	SCALE:
003:	22 April 2023:	As-Built Drawing	
-			
-			

DRAWING No.: 109

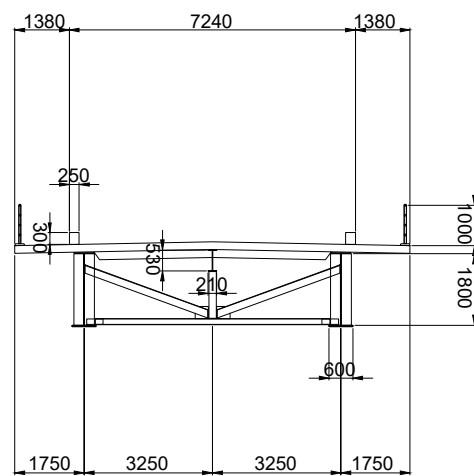
# TOUCH-UP PAINTING OF XE BANGNOUAN BRIDGE



PLAN VIEW s=1:500



Cross Section of Superstructure s=1:200



CHALERNCHAI CONSTRUCTION-REPAIR IRRIGATION,  
ROADS BRIDGE AND HOMESTEAD SOLE CO., LTD

TITLE	NAME	SIGNATURE
PREPARED BY		
CHECKED BY		
APPROVED BY		



THE LAO PEOPLE'S DEMOCRATIC REPUBLIC  
MINISTRY OF PUBLIC WORKS AND TRANSPORT

**THE PROJECT FOR CAPACITY DEVELOPMENT ON BRIDGE  
MAINTENANCE AND MANAGEMENT**

DRAWING TITLE:  
GENERAL DRAWING OF BRIDGE REPAIR AND  
REINFORCEMENT OF XE BANGNOUAN BRIDGE

REV. No.	DATE	DESCRIPTION	SCALE:
002:	22 April 2023:	As-Built Drawing	
-			
-			
-			

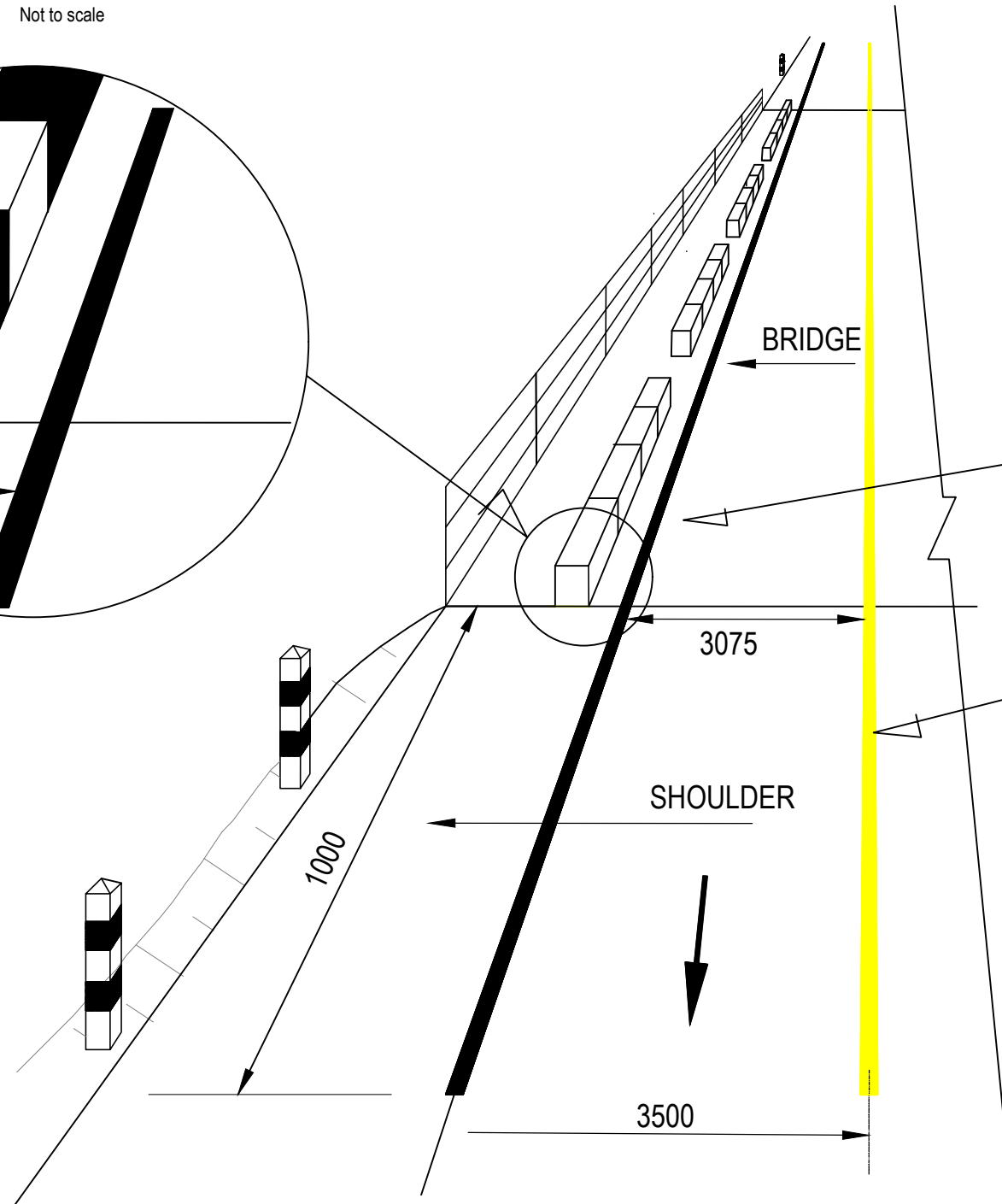
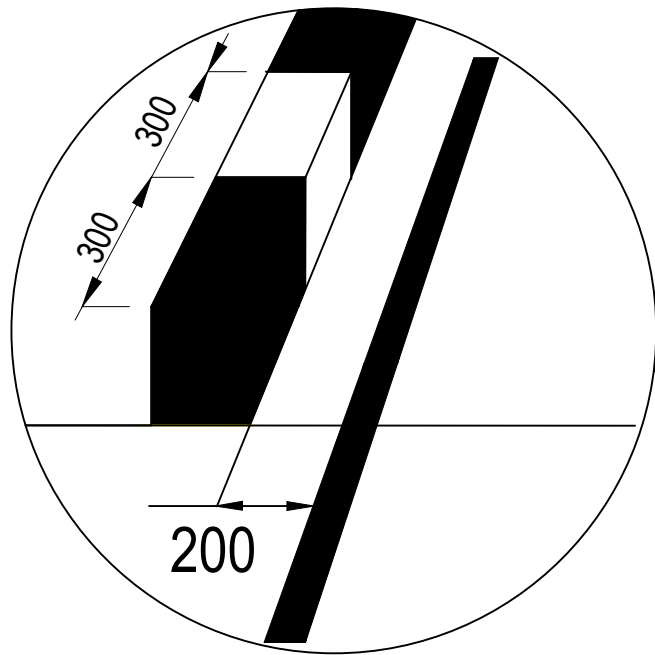
DRAWING No.: 110

# GENERAL DRAWING OF BRIDGE REPAIR AND ROAD MARKING OF XE-BANGNOUAN BRIDGE

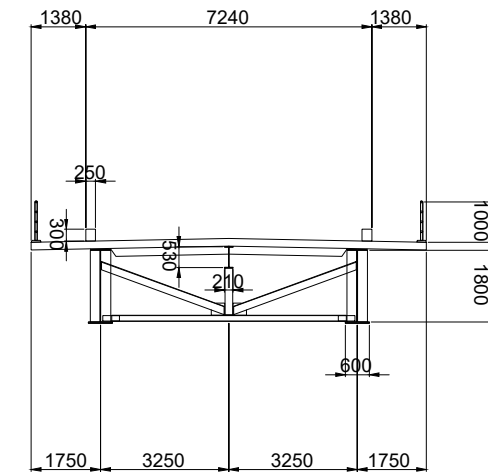
## Traffic Paint and Road Marking

See Detail

Not to scale



Cross Section of Superstructure s=1:200



Edge line marking  
(Solid white line width=150mm) for Road Markings on Bridge  
Surface and Approach Road

Center line marking  
(Solid yellow line width =150mm) for Road Markings on  
Bridge Surface and Approach Road

Item	Description	Unit	Quantity
1	Center line marking (Solid yellow line) for Road Markings on Bridge Surface	m2	21
2	Center line marking (Solid yellow line) for Road Markings on Approach Road	m2	3
3	Edge line marking (Solid white line) for Road Markings on Bridge Surface	m2	42
4	Edge line marking (Solid white line) for Road Markings on Approach Road	m2	12
Total of Solid yellow line			54 m2
Total of Solid white line			24 m2

Note: Dimensions are currently tentative value and to be updated based on site inspection.



Chalernchai Construction - Repair Irrigation,  
Roads Bridge and Homestead Sole Co.,Ltd

TITLE	NAME	SIGNATURE
PREPARED BY		
CHECKED BY		
APPROVED BY		



THE LAO PEOPLE'S DEMOCRATIC REPUBLIC  
MINISTRY OF PUBLIC WORKS AND TRANSPORT

THE PROJECT FOR CAPACITY DEVELOPMENT ON BRIDGE  
MAINTENANCE AND MANAGEMENT

DRAWING TITLE:  
GENERAL DRAWING OF BRIDGE REPAIR AND  
ROAD MARKING OF XE BANGNOUAN BRIDGE

REV. No.	DATE	DESCRIPTION	SCALE:
01	22 April 2023	As-Built Drawing	
-			
-			
-			

DRAWING No.: 111



Republic of the Lao People's Democratic Republic  
Independence Independence Unity Democracy Permanence

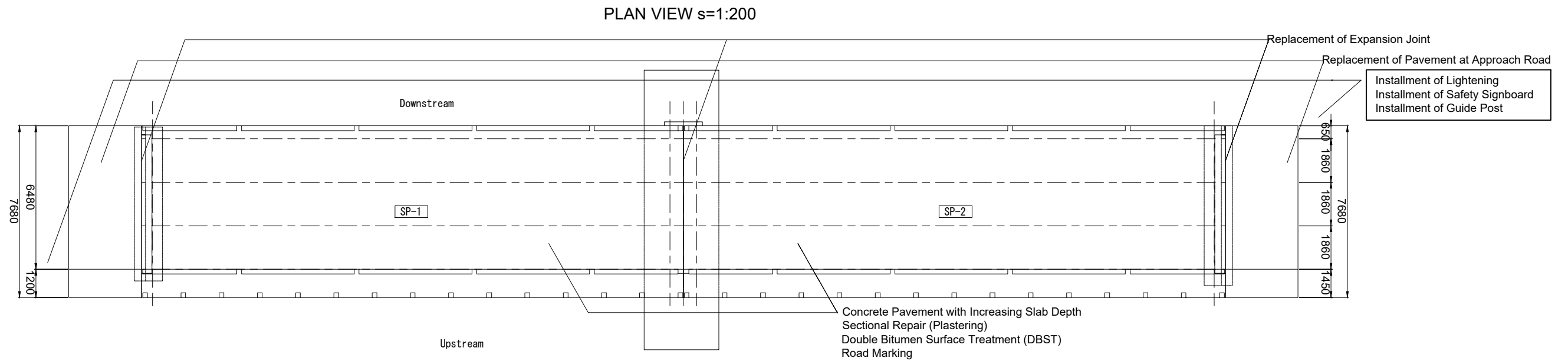
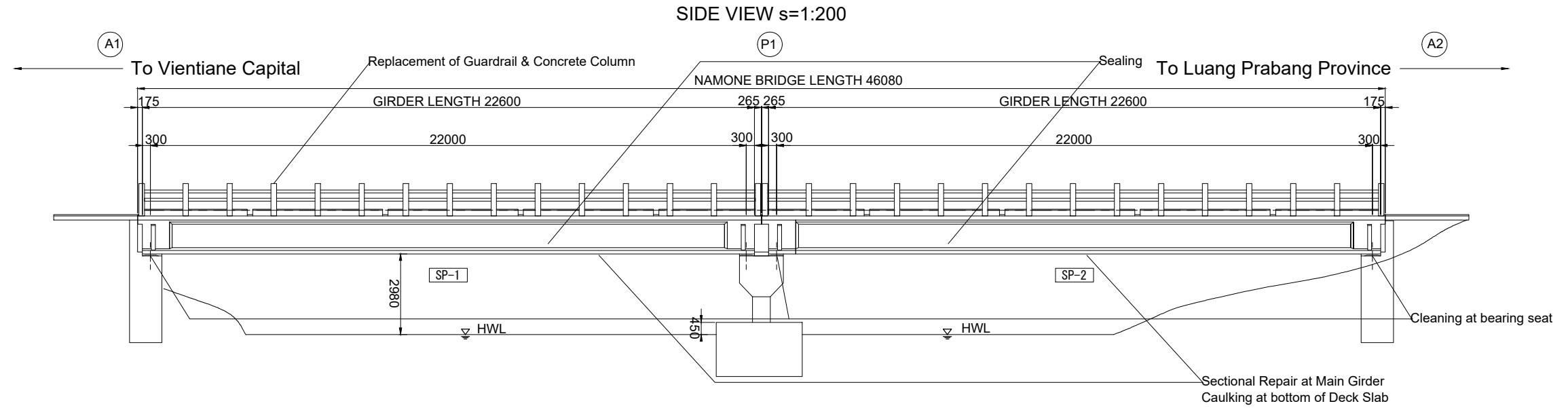


Ministry Of Public Works And Transport  
Department Of Road

# Asbuilt Drawing

FOR NAMONE BRIDGE

# GENERAL DRAWING OF BRIDGE REPAIR AND REINFORCEMENT OF NAMONE BRIDGE



Cross Section of Superstructure s=1:150

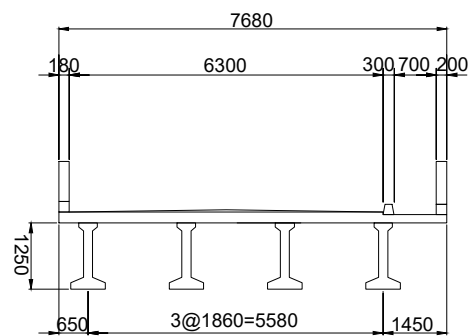


Table of Item

	Item	Element	Remarks
Bridge Repair and Reinforcement	Caulking	RC Deck Slab / Main Girder / Crossbeam	Epoxy Resin
	Sectional Repair (Plastering)	RC Deck Slab / Main Girder	Polymer Cement Mortar
	Replacement of Pavement	Bridge Surface / Approach Road	Bridge Surface: Concrete Pavement / Approach Road: Straight Asphalt
	Replacement of Expansion Joint	Expansion Joint	
	Replacement of Guardrail	Guardrail	
	Cleaning at Bearing Seat	Bearing	
New Construction	Road Marking		
	Installation of Lightening		
	Installation of Safety Signboard		Warning of Road Width Reduction
	Installation of Guide Post		

Note: Dimensions are currently tentative value and to be updated based on site inspection.



**Chalernchai Construction - Repair Irrigation,  
Roads Bridge and Homestead Sole Co.,Ltd**

TITLE	NAME	SIGNATURE
PREPARED BY		
CHECKED BY		
APPROVED BY		



**THE LAO PEOPLE'S DEMOCRATIC REPUBLIC  
MINISTRY OF PUBLIC WORKS AND TRANSPORT**

**THE PROJECT FOR CAPACITY DEVELOPMENT ON BRIDGE  
MAINTENANCE AND MANAGEMENT**

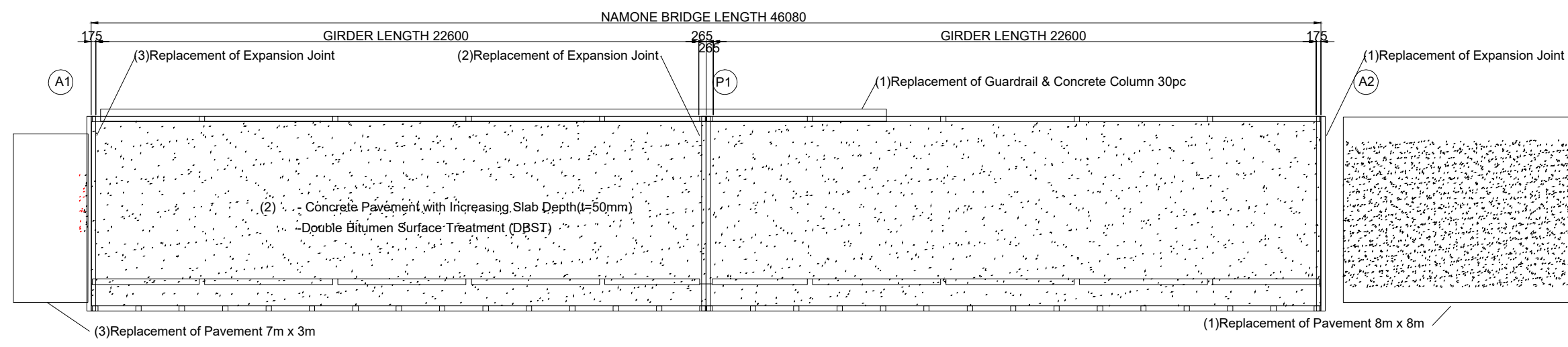
DRAWING TITLE:  
**GENERAL DRAWING OF BRIDGE REPAIR AND  
REINFORCEMENT OF NAMONE BRIDGE**

REV. No.	DATE	DESCRIPTION	SCALE:
02	2.May.2023	As-built Drawing	
-			
-			
-			

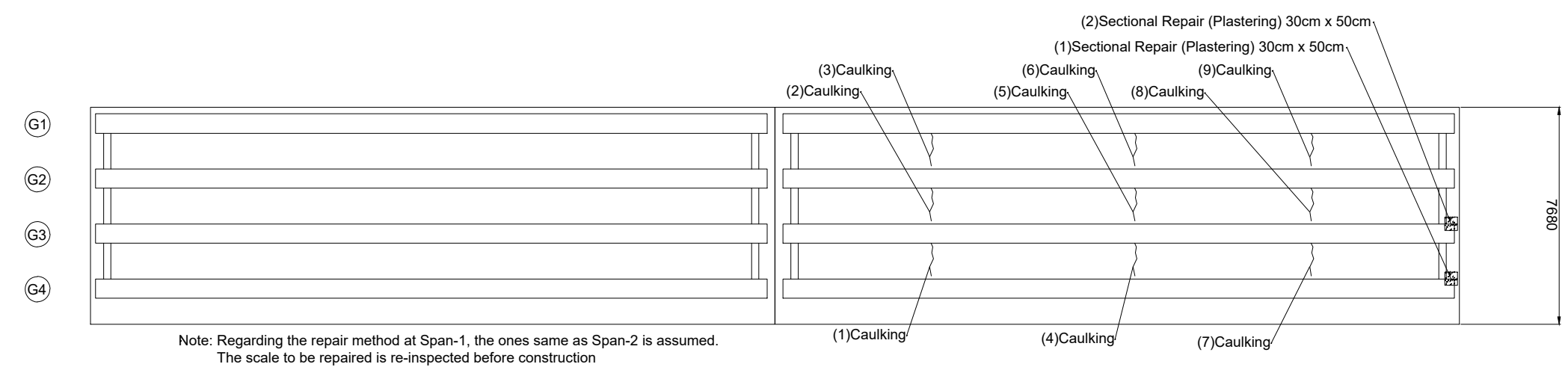
DRAWING No.: 001

# DETAIL DRAWING OF BRIDGE REPAIR AND REINFORCEMENT OF NAMONE BRIDGE

[GENERAL REPAIR]  
BRIDGE SURFACE s=1:200

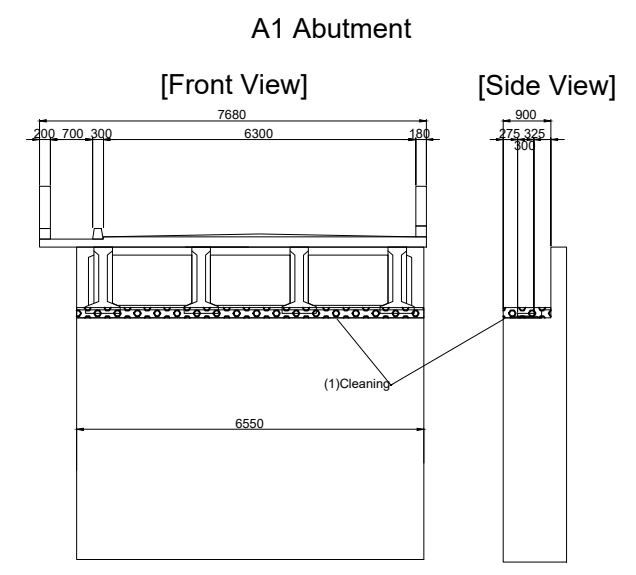


BRIDGE BOTTOM s=1:200

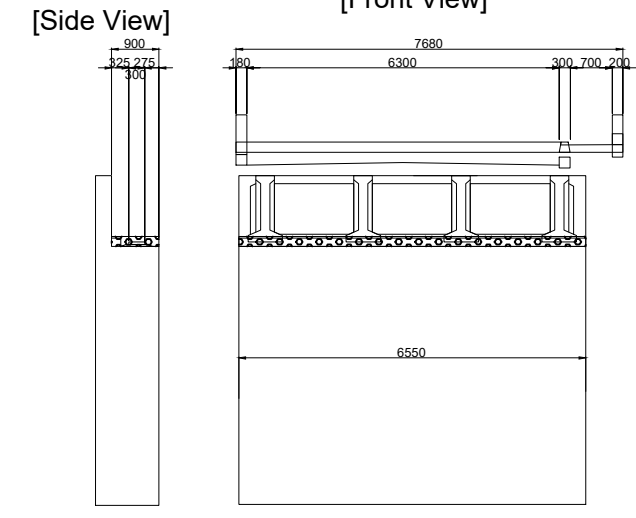


Note: Regarding the repair method at Span-1, the ones same as Span-2 is assumed. The scale to be repaired is re-inspected before construction

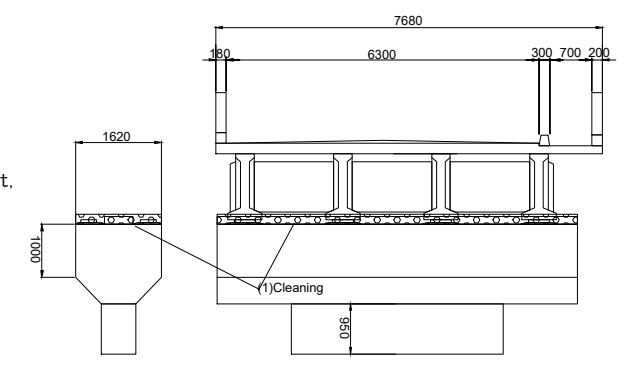
Cross Section of Substructure s=1:150



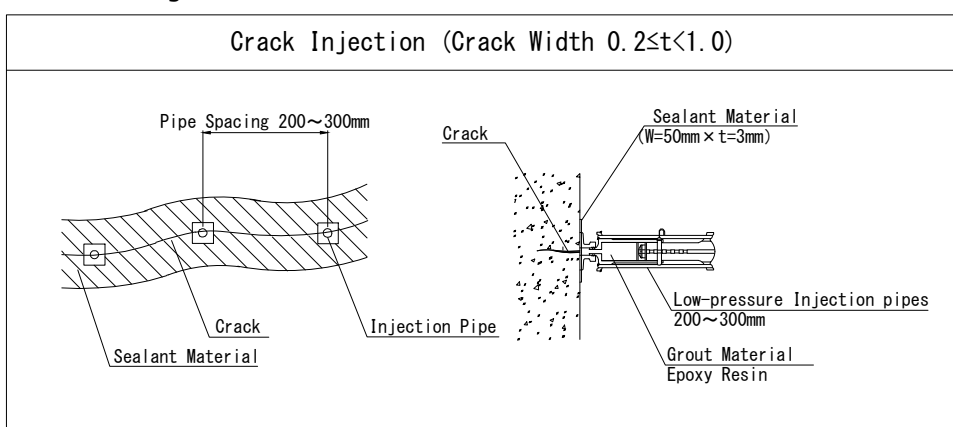
A2 Abutment  
[Front View]



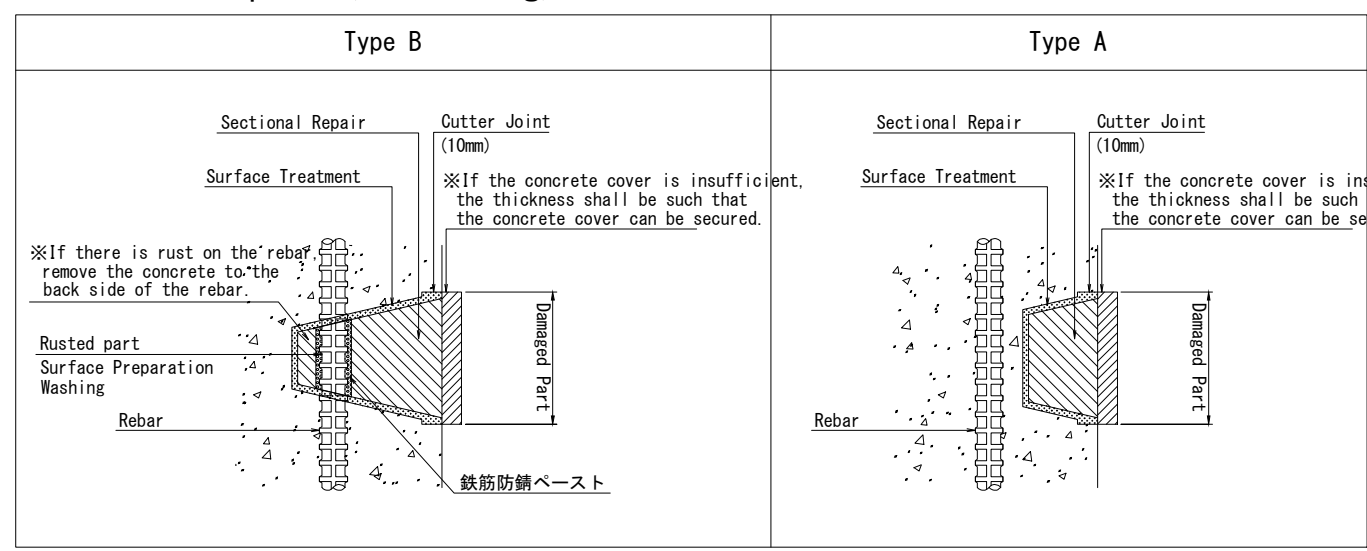
P1 Pier  
[Front View]



## Crack Injection



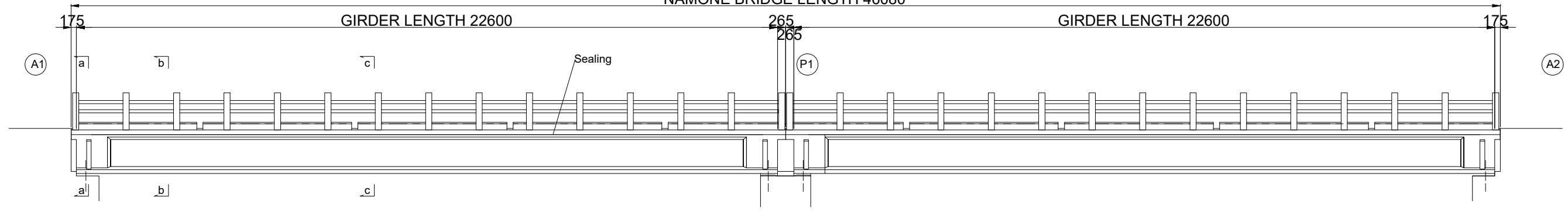
## Sectional Repair (Plastering)



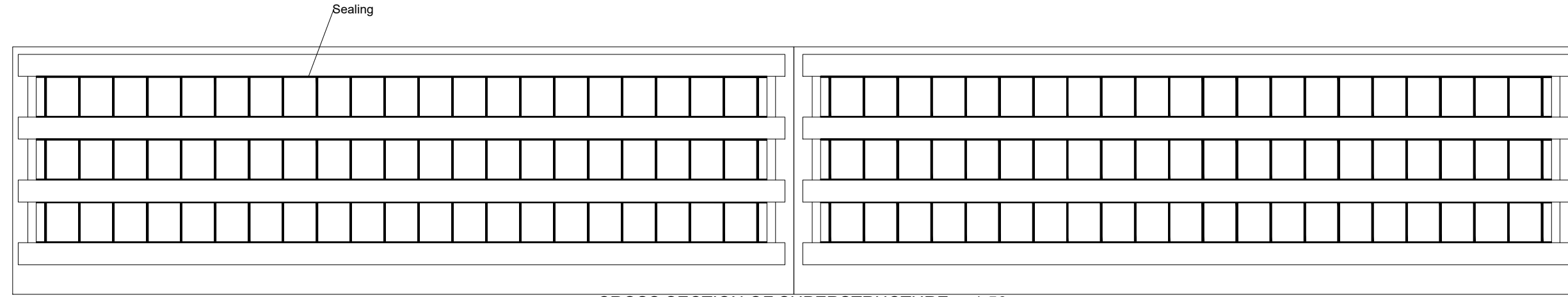
# REPAIR OF RC SLAB JOINT OF NAMONE BRIDGE

SIDE VIEW s=1:150

NAMONE BRIDGE LENGTH 46080



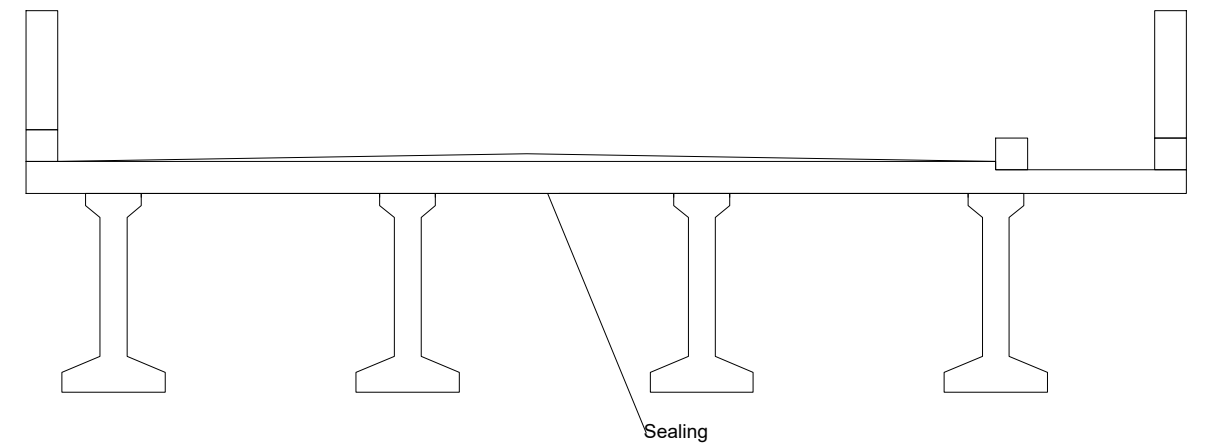
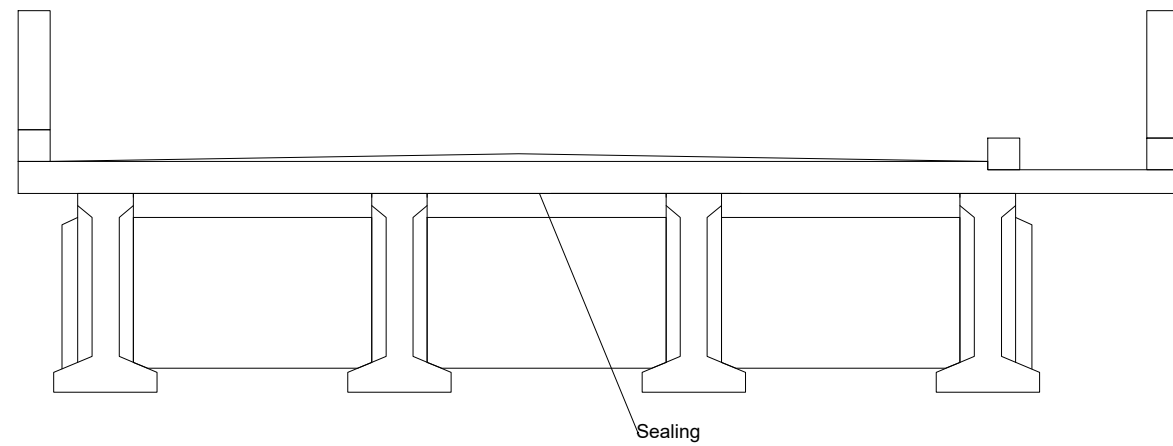
BRIDGE BOTTOM s=1:150



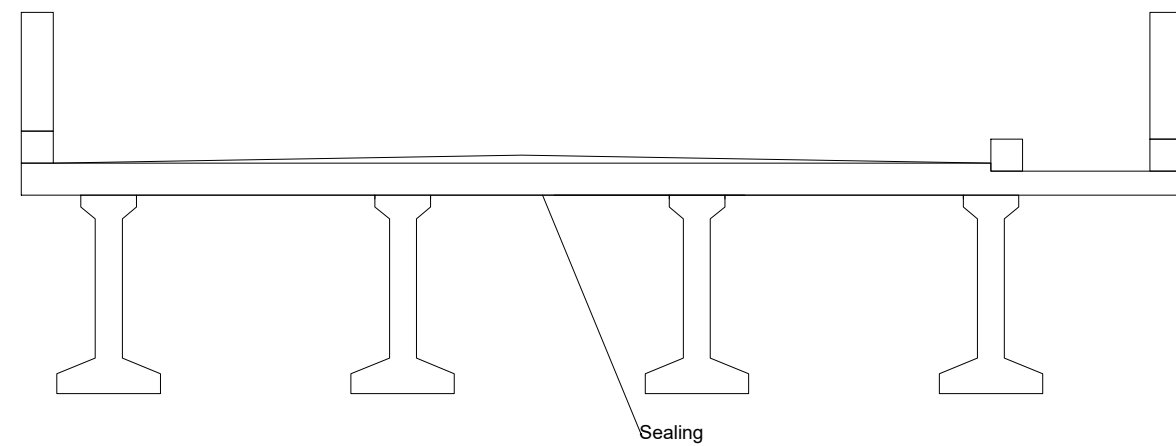
CROSS SECTION OF SUPERSTRUCTURE s=1:50

[a-a Section]

[c-c Section]



[b-b Section]



**Chalernchai Construction - Repair Irrigation,  
Roads Bridge and Homestead Sole Co.,Ltd**

TITLE	NAME	SIGNATURE
PREPARED BY		
CHECKED BY		
APPROVED BY		



**THE LAO PEOPLE'S DEMOCRATIC REPUBLIC  
MINISTRY OF PUBLIC WORKS AND TRANSPORT**

**THE PROJECT FOR CAPACITY DEVELOPMENT ON BRIDGE  
MAINTENANCE AND MANAGEMENT**

DRAWING TITLE:  
**GENERAL DRAWING OF BRIDGE REPAIR AND  
REINFORCEMENT OF NAMONE BRIDGE**

REV. No.	DATE	DESCRIPTION
02	2.May.2023	As-built Drawing
-		
-		
-		

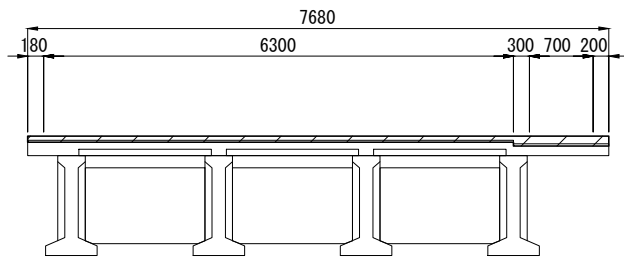
SCALE:

DRAWING No.:

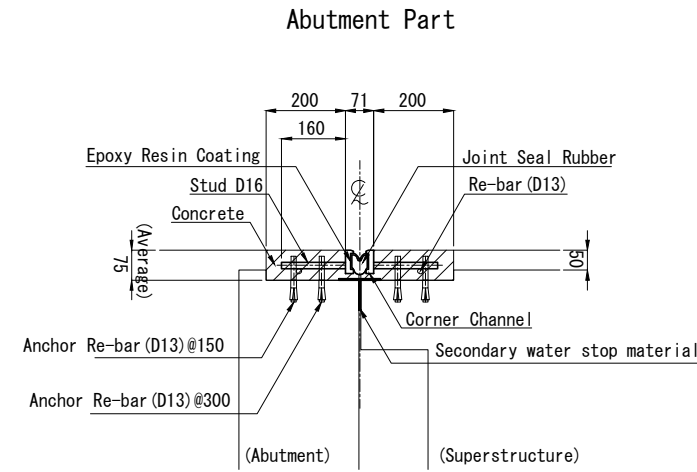
003

# Expansion Joint

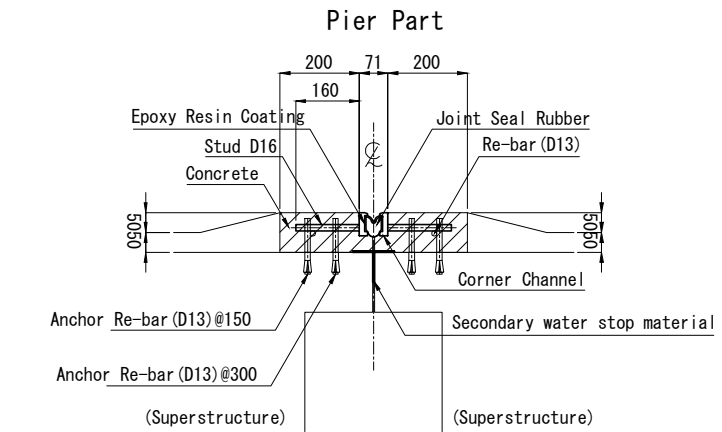
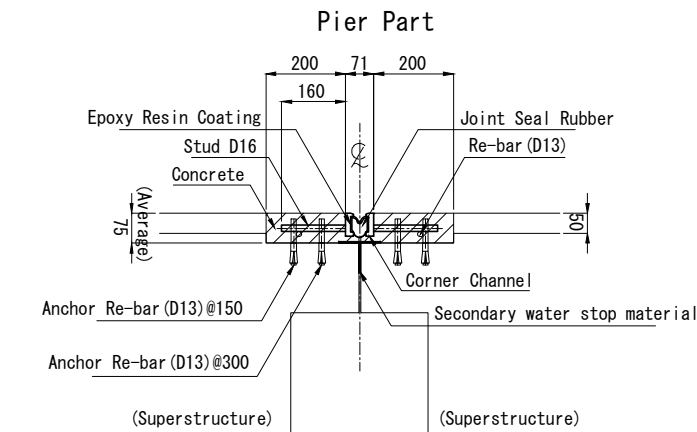
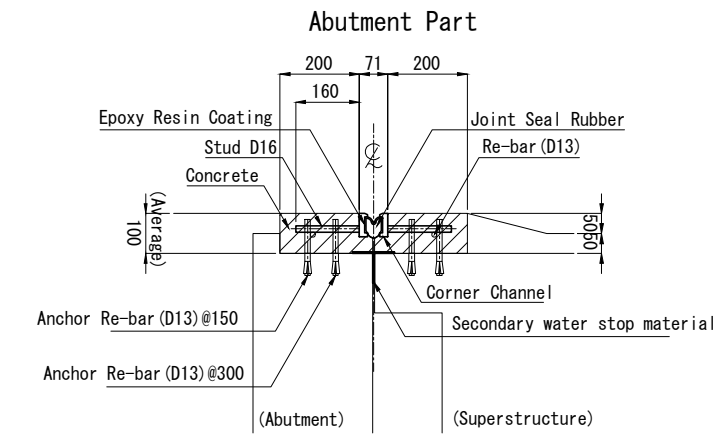
Cross Section S=1/50



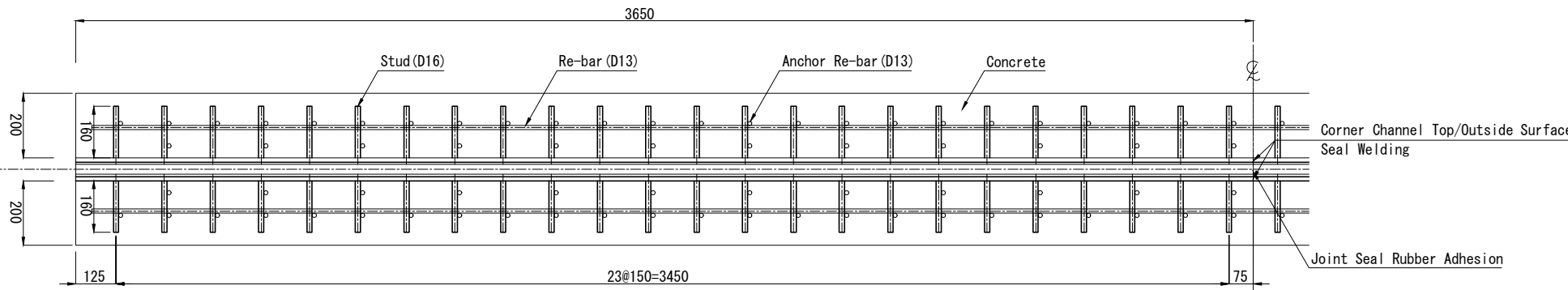
Detail of Expansion Joint (Roadway) S=1/10



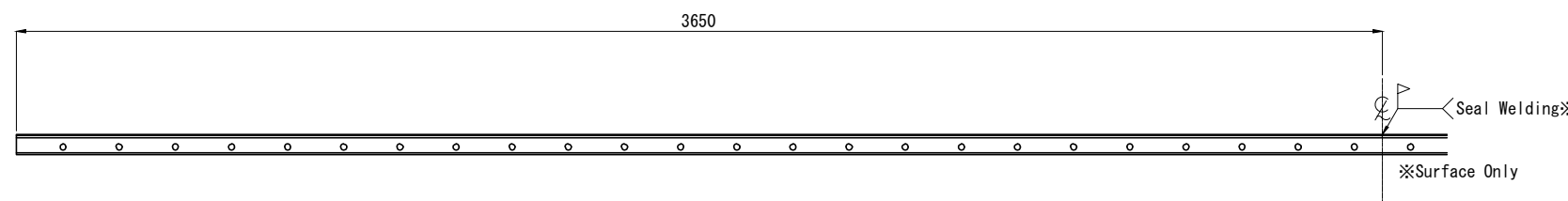
Detail of Expansion Joint (Sidewalk) S=1/10



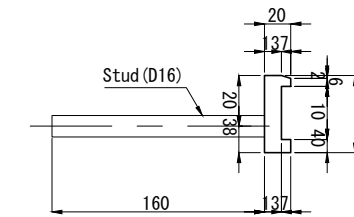
Plan S=1/10



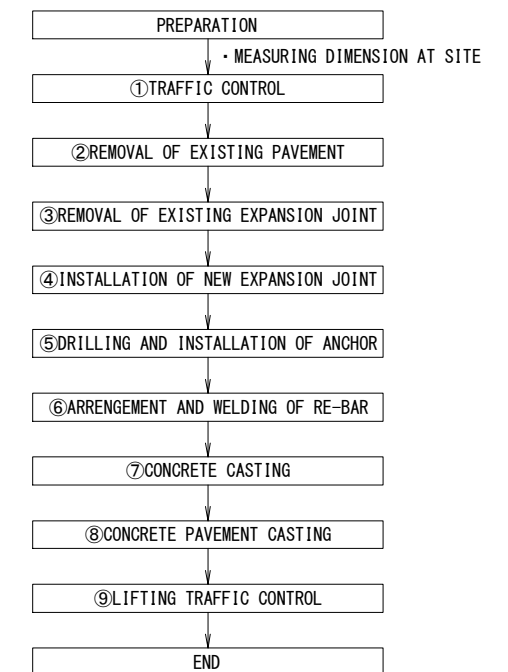
Side View S=1/10



Detail of Corner Channel S=1/3



CONSTRUCTION FLOWCHART FOR REPLACEMENT OF EXPANSION JOINT



Chalernchai Construction - Repair Irrigation,  
Roads Bridge and Homestead Sole Co.,Ltd

TITLE	NAME	SIGNATURE
PREPARED BY		
CHECKED BY		
APPROVED BY		



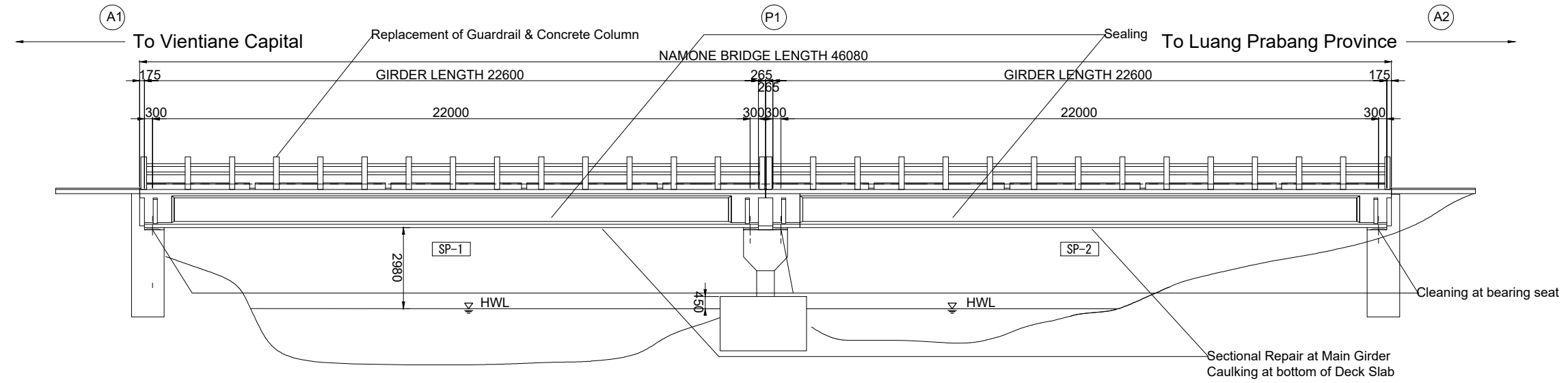
THE LAO PEOPLE'S DEMOCRATIC REPUBLIC  
MINISTRY OF PUBLIC WORKS AND TRANSPORT

THE PROJECT FOR CAPACITY DEVELOPMENT ON BRIDGE  
MAINTENANCE AND MANAGEMENT  
DRAWING TITLE:  
GENERAL DRAWING OF BRIDGE REPAIR AND  
REINFORCEMENT OF NAMONE BRIDGE

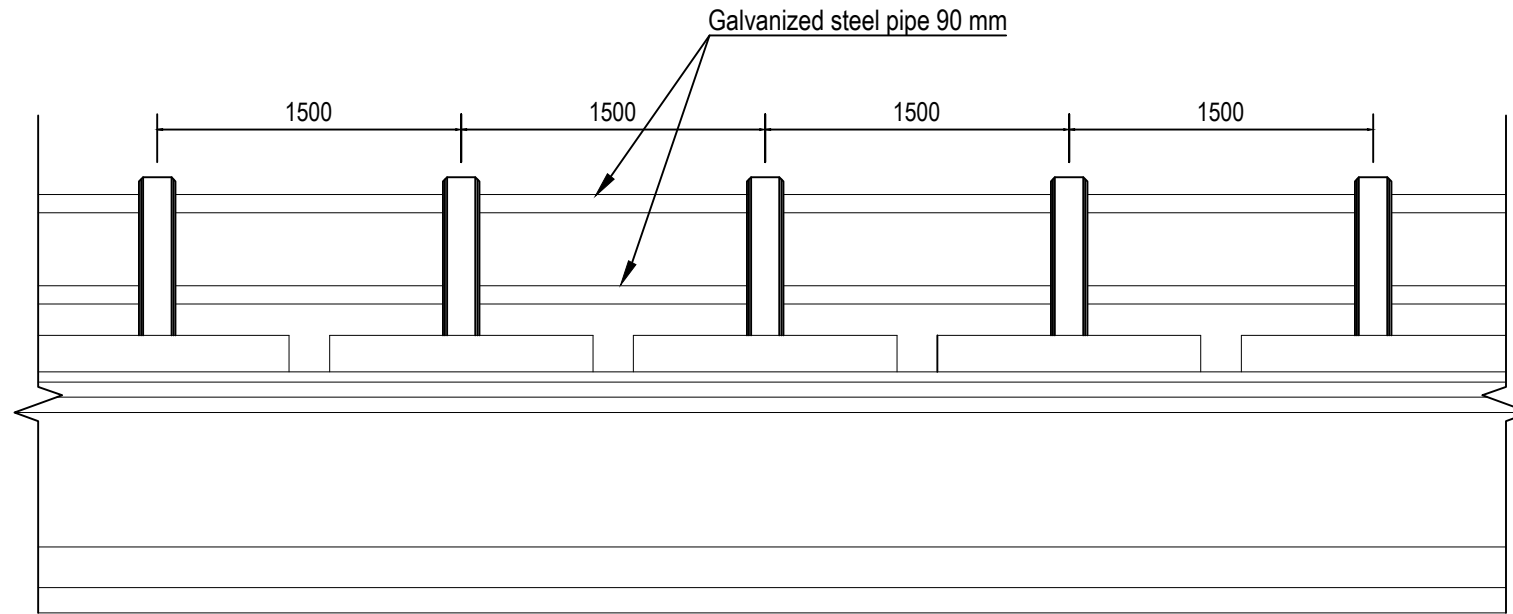
REV. No.	DATE	DESCRIPTION	SCALE:
02	2.May.2023	As-built Drawing	
-			
-			
-			

DRAWING No.: 004

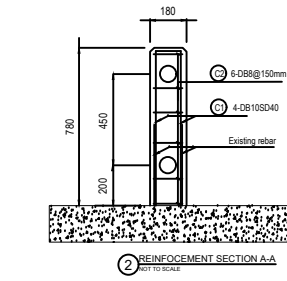
# GENERAL DRAWING OF BRIDGE REPAIR AND REINFORCEMENT OF NAMONE BRIDGE



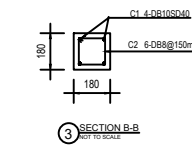
## DETAIL OF GUARDRAIL (REINFORCEMENT)



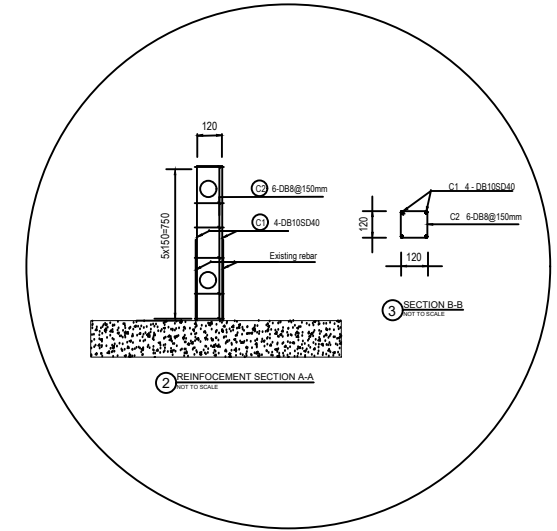
**1** VIEW A  
NOT TO SCALE



**(C1)** 4-DB10x860



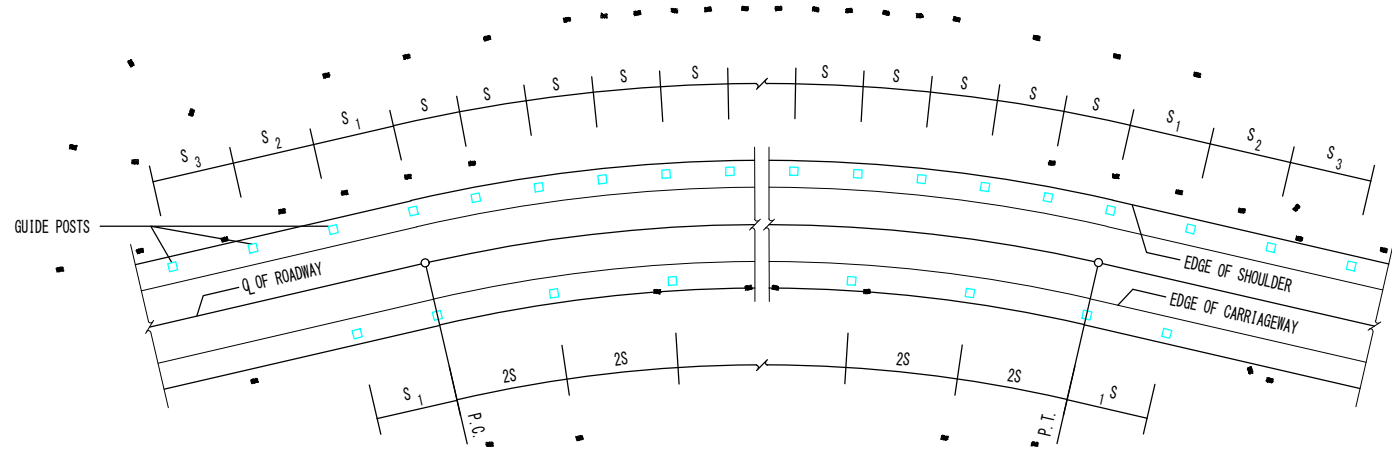
**(C2)** 6-DB8x600



## Bar Quantity

Type	Dia.	Length	Number	Unit Weight	Weight for 1 Bar	Total Weight	Remarks
C 1	D10	860	72	0.617	0.531	38.232	┌───┐
C 2	D06	600	108	0.395	0.237	25.596	┆
Total					D10	38.232 kg	
Total					D06	25.596 kg	
(SD345) Total Weight						63.828 kg	

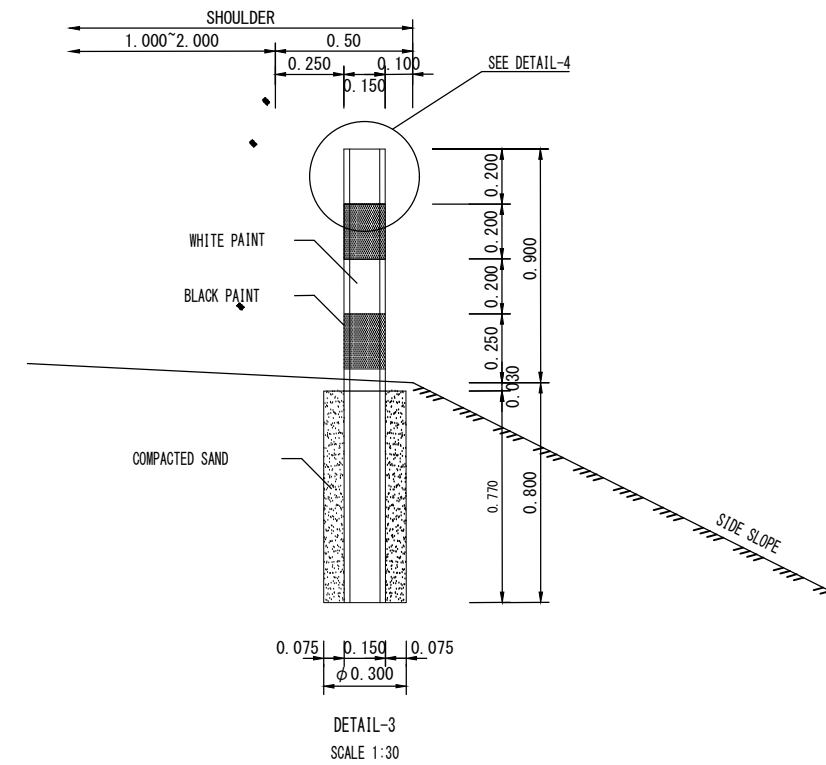
# GUIDE POST INSTALLATION AT BRIDGE APPROACH



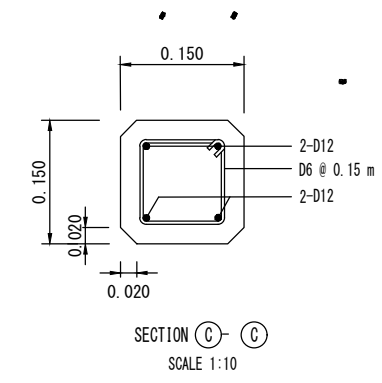
GUIDE POST INSTALLATION IN CURVE SECTION (GP-C)  
NOT TO SCALE

SPACING OF GUIDE POST

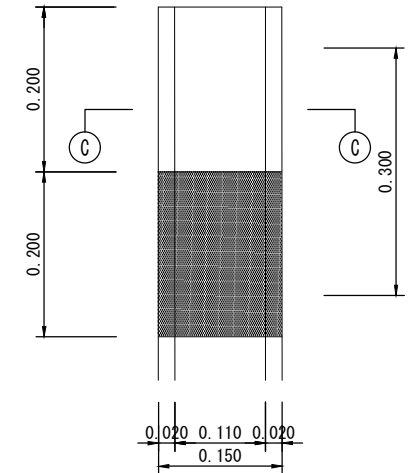
RADIUS OF CURVE (METER)	SPACING OF GUIDE POST (METER)			
	S	S <sub>1</sub>	S <sub>2</sub>	S <sub>3</sub>
15-74	4	7	12	24
75-99	6	11	18	36
100-149	7	13	21	42
150-199	8	14	24	48
200-299	9	16	27	54
300-499	10	18	30	60
500-999	15	27	45	60
1000-1500	21	38	60	60



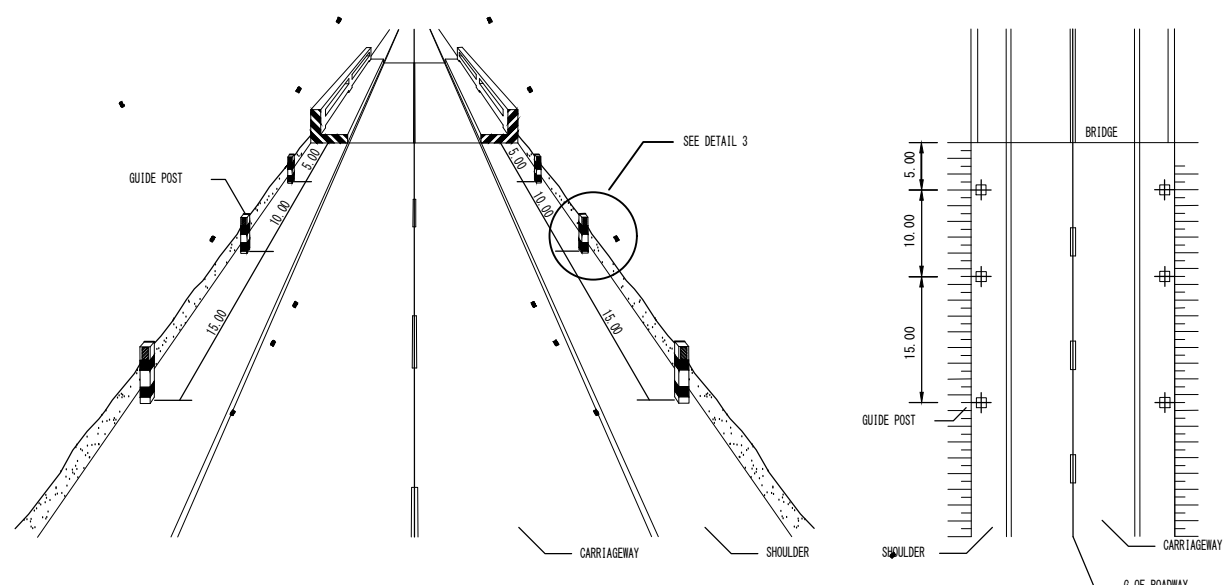
DETAIL-3  
SCALE 1:30



SECTION C-C  
SCALE 1:10



DETAIL-4  
SCALE 1:10  
GP-H, GP-D



GUIDE POST INSTALLATION AT BRIDGE APPROACH  
NOT TO SCALE

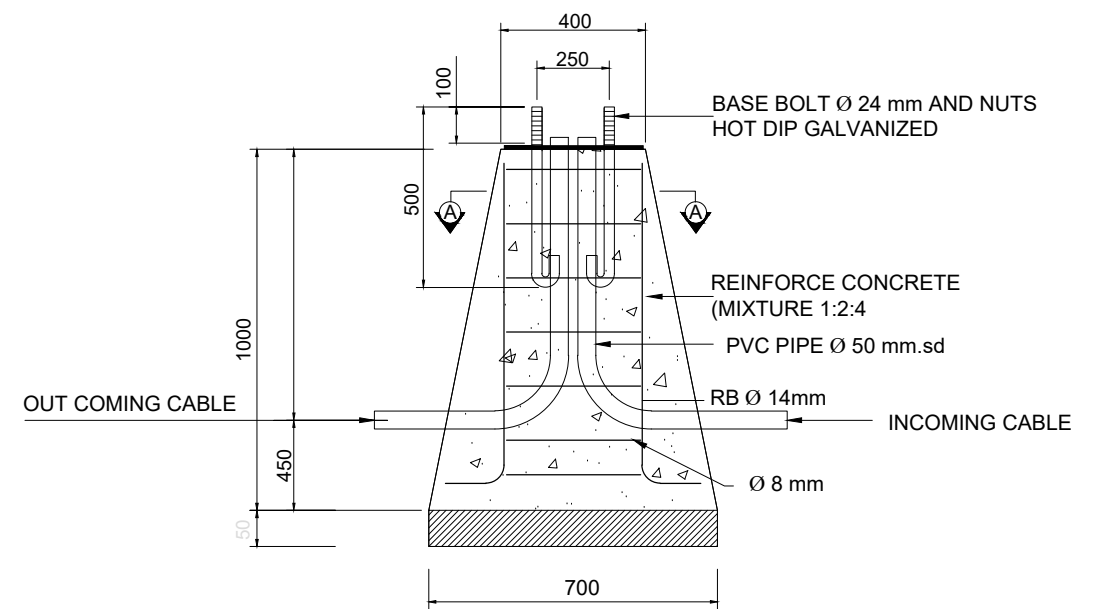
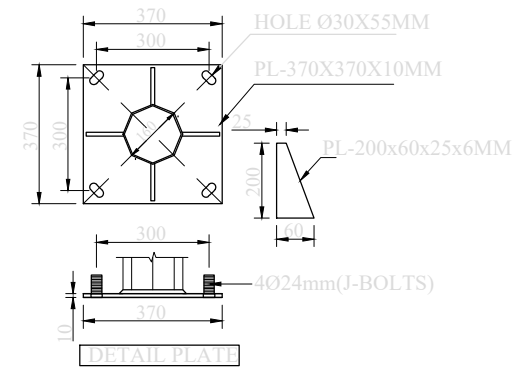
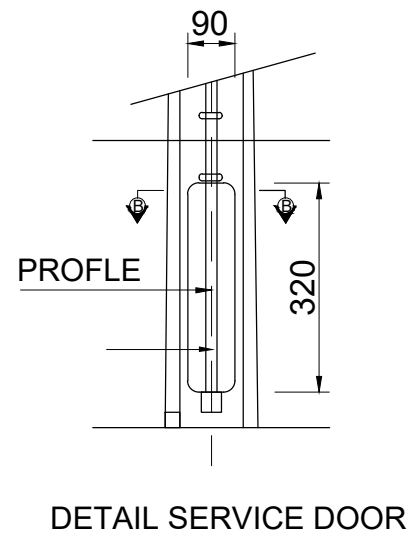
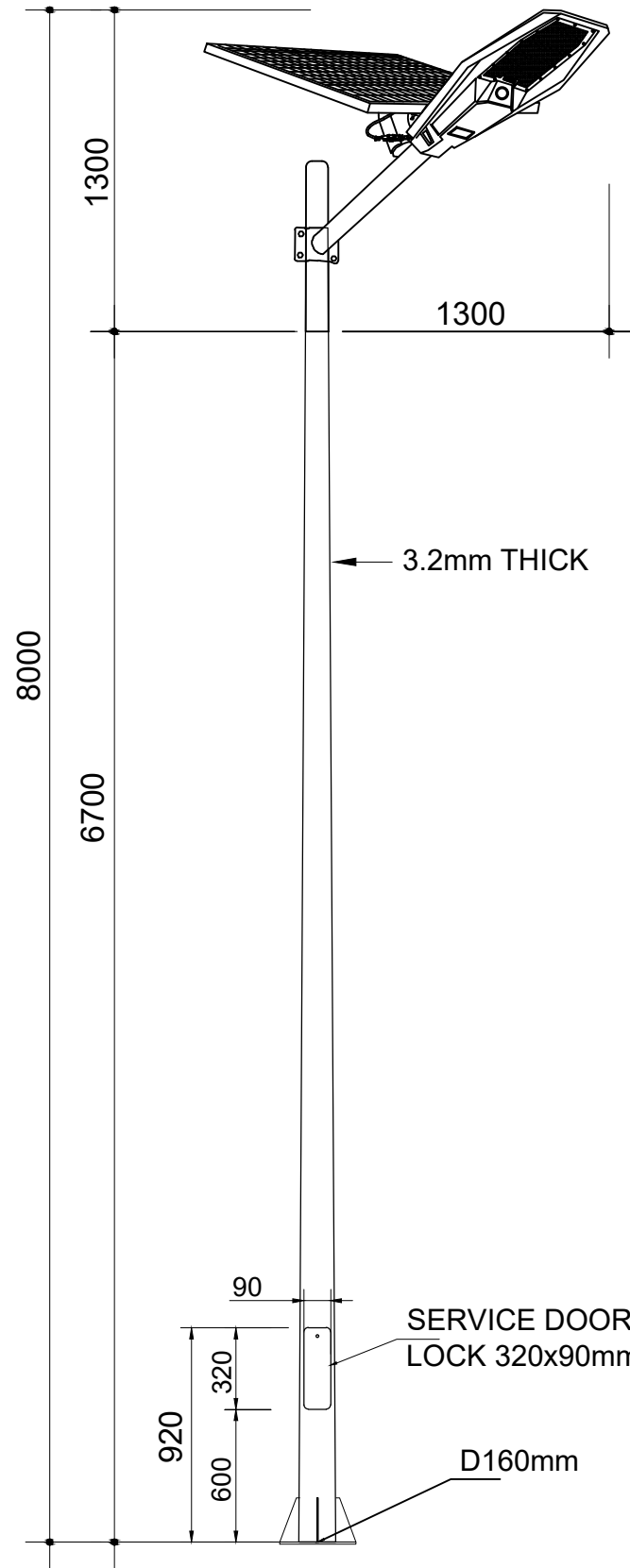
## Bar Quantity

Type	Dia.	Length	Number	Unit Weight	Weight for 1 Bar	Total Weight	Remarks
C 1	D12	1610	28	0.89	1.433	40.121	
C 2	D06	600	168	0.222	0.133	22.3776	
Total					D10	40.121 kg	
Total					D06	22.377 kg	
(SD345) Total Weight						62.498 kg	

- NOTES:
- DIMENSIONS ARE IN METERS UNLESS OTHERWISE INDICATED.
  - POST SHALL BE ERECTED TRULY VERTICAL.
  - CONCRETE SHALL HAVE A MINIMUM ULTIMATE COMPRESSIVE STRENGTH IN 24 MPa AT 28 DAYS.

Note: Dimensions are currently tentative value and to be updated based on site inspection.

# GENERAL DRAWING OF SAFETY LIGHTENING OF NAM MONE BRIDGE



CONCRETE FOUNDATION FOR POLE 8-9M

LIGHTING POLE SCALE 1:200

SINGLE BRACKET STEEL LIGHTING POLE MOUNTING HEIGHT 8 m

Note: Dimensions are currently tentative value and to be updated based on site inspection.



Chalernchai Construction - Repair Irrigation,  
Roads Bridge and Homestead Sole Co.,Ltd

TITLE	NAME	SIGNATURE
PREPARED BY		
CHECKED BY		
APPROVED BY		



THE LAO PEOPLE'S DEMOCRATIC REPUBLIC  
MINISTRY OF PUBLIC WORKS AND TRANSPORT

THE PROJECT FOR CAPACITY DEVELOPMENT ON BRIDGE  
MAINTENANCE AND MANAGEMENT

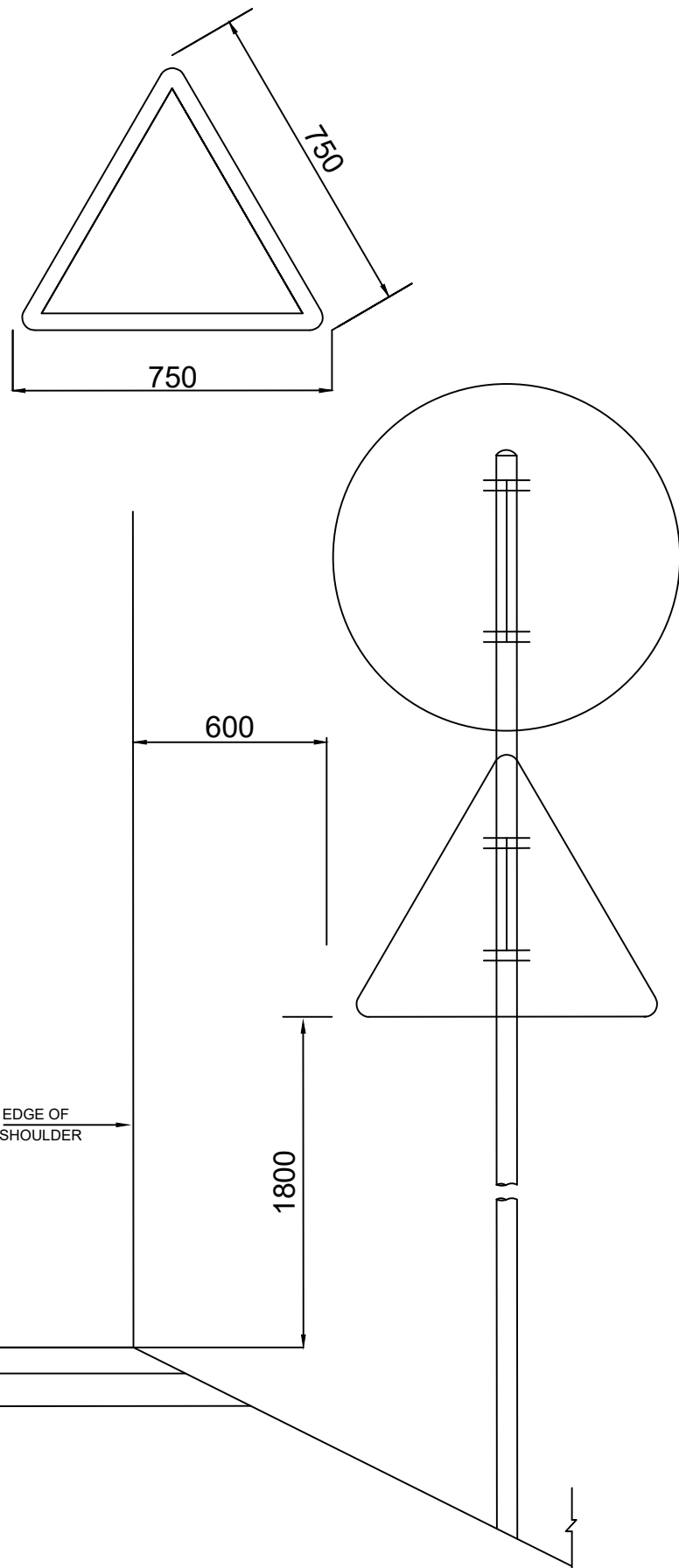
DRAWING TITLE:  
GENERAL DRAWING OF BRIDGE REPAIR AND  
SAFETY LIGHTENING OF NAM MONE BRIDGE

REV. No.	DATE	DESCRIPTION	SCALE:
02	2.May.2023	As-built Drawing	
-	-	-	
-	-	-	
-	-	-	

DRAWING No.: 007

# GENERAL DRAWING OF SAFETY SIGN BOARD OF NAMONE BRIDGE

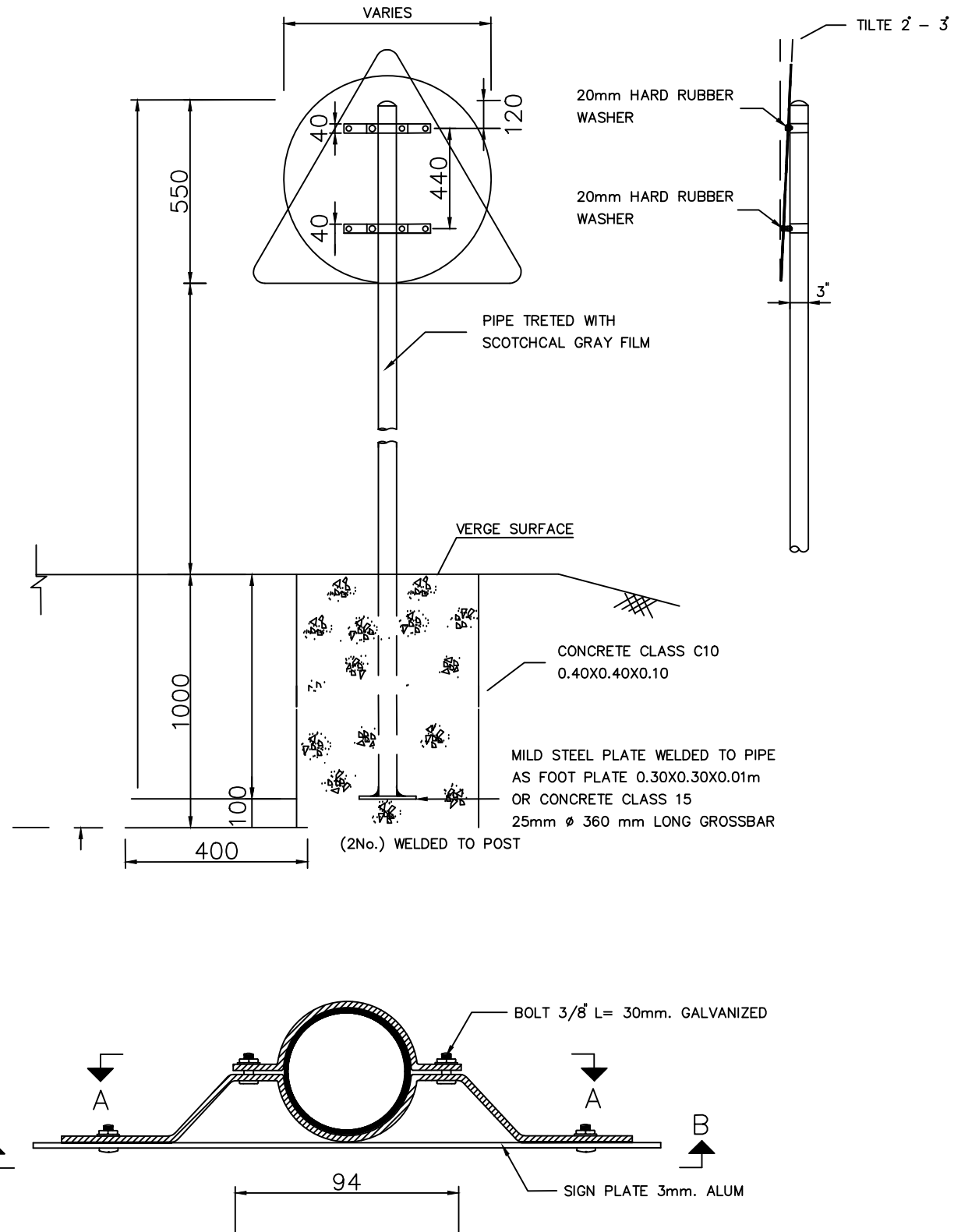
WARNING SIGN



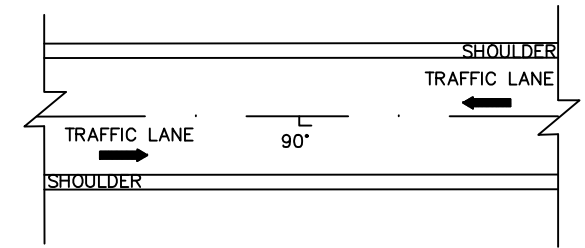
## DETAILS OF ROAD SIGNS (2/2)

### POST TYPE A

THE SIGN HAS TO BE TILTED BACK BY MEANS OF HARD RUBBER WASHER 3mm. OR 20mm. THICKNESS



### PLACEMENT OF SIGN POST



### NOTES:

1. ALL DIMENSIONS ARE IN MILLIMETERS UNLESS OTHERWISE INDICATED.
2. SIGN PLATE SHALL BE MADE OF 3mm. THICK ALLUMINIUM ALLOY.
3. ALUMINIUM ALLOY SIGN PLATE SHALL CONFORM TO.
4. UNLESS OTHERWISE INDICATED SIGNS AND THEIR SUPPORTS SHALL BE OF THE SIZES, COLOURS AND TYPES PRESCRIBED BY, AND SITE IN ACCORDANCE WITH THE RECOMMENDATIONS OF THE DEPARTMENT'S TRAFFIC CONTROL DEVICE MANUAL, PART I ISSUED.
5. REFLECTIVE SHEETING SHALL CONFORM TO ENGINEER GRADE AND HIGH INTENSITY GRADE
6. SIGN FRAME SHALL BE MADE OF 50x25x1.6mm. STEEL RECTANGULAR TUBING FRAME WELDED AND SMOOTHED IN PRIMING. PAINT FOR FRAME SHALL BE RUST PREVENTIVE PAINT (RED LEAD BASED PRIMER FOR IRON AND STEEL SURFACED, TYPE 3) WHICH CONFORMS TO; THE SUCCEEDING COATING SHALL BE PAINTED WITH BLACK METAL PAINT.
7. LENGTH OF SIGN POSTS AND POSITIONS OF HOLES STATED IN THE DRAWING ARE FOR THE MIN. SIZE ONLY. THESE LENGTHS AND POSITION OF HOLES SHALL BE ADJUSTED DEPENDING ON SITE CONDITIONS.
8. BACK OF SIGN, CLOSE TO EDGE OF PAVEMENT SIDE, SHALL BE STAMPED WITH DEPTH NOT LESS THAN 0.5 mm.
9. CONCRETE SHALL MEET THE REQUIREMENTS OF CONCRETE CLASS 15.
10. CLEAR CONCRETE COVER SHALL BE 30mm.
11. REINFORCING STEEL SHALL CONFORM TO AASHTO M 31.



Chalernchai Construction - Repair Irrigation,  
Roads Bridge and Homestead Sole Co.,Ltd

TITLE	NAME	SIGNATURE
PREPARED BY		
CHECKED BY		
APPROVED BY		



THE LAO PEOPLE'S DEMOCRATIC REPUBLIC  
MINISTRY OF PUBLIC WORKS AND TRANSPORT

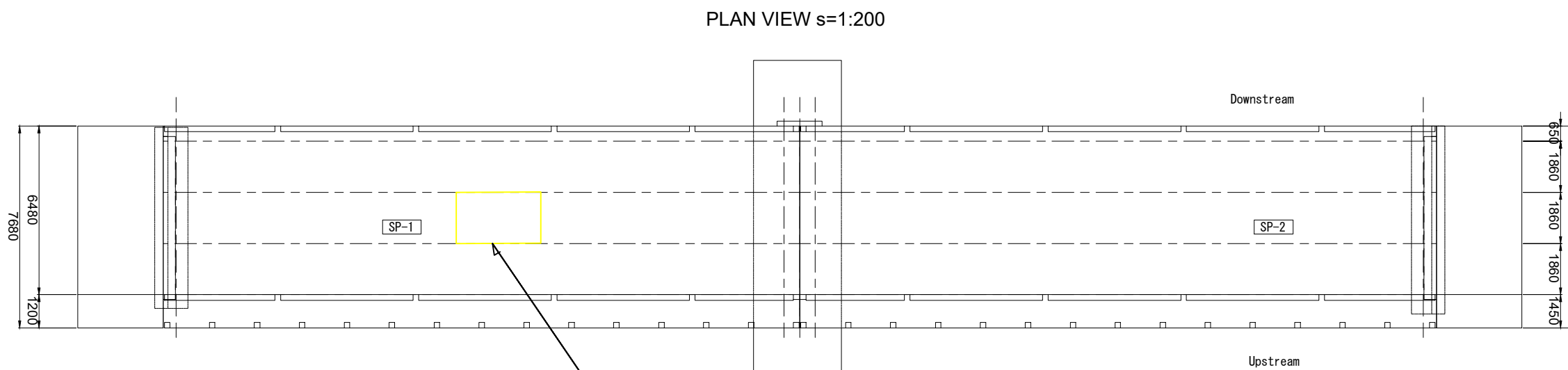
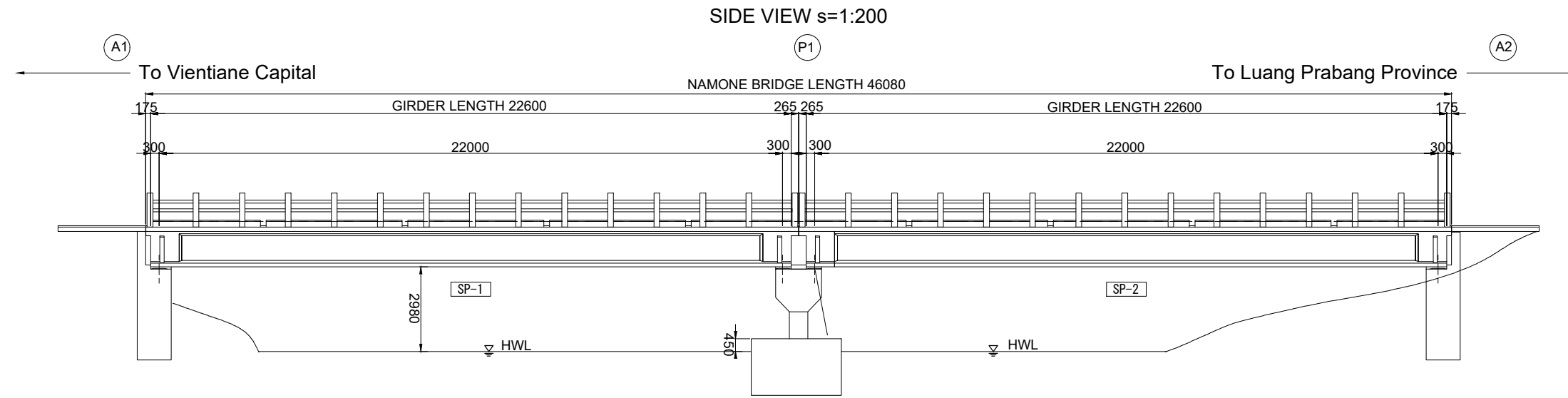
THE PROJECT FOR CAPACITY DEVELOPMENT ON BRIDGE  
MAINTENANCE AND MANAGEMENT

DRAWING TITLE:  
GENERAL DRAWING BRIDGE REPAIR AND  
SAFETY SIGN BOARD OF NAMONE BRIDGE

REV. No.	DATE	DESCRIPTION	SCALE:
02	2.May.2023	As-built Drawing	
-			
-			
-			

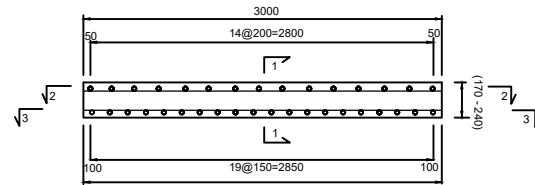
DRAWING No.: 008

# REPAIR OF EXPOSE HOLE ON RC DECK SLAB OF NAMONE BRIDGE

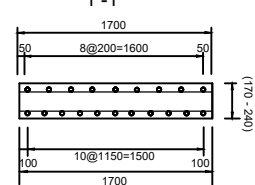


RC Deck Slab Expose Area  
L=3 m  
W=1.7 m  
H= 0.17-0.24 m

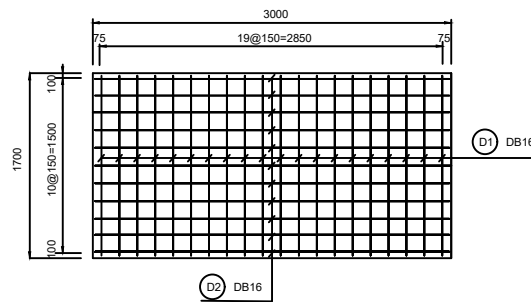
Bar arrangement of Expose Hole



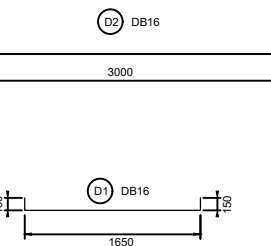
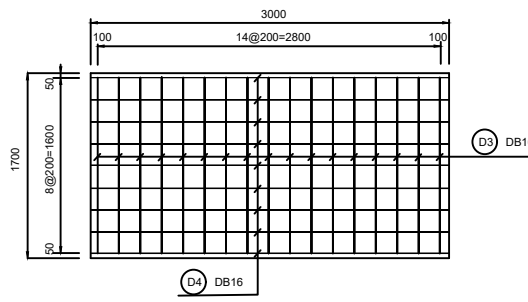
SECTION 1-1



SECTION 2-2



SECTION 3-3



Bar Quantity

Type	Dia.	Length	Number	Unit Weight	Weight for 1 Bar	Total Weight	Remarks
D1	D16	1950	15	1.56	3.042	45.63	—
D2	D16	3000	9	1.56	3.042	27.378	—
(SD40) Total Weight					73.008 kg		

Note: Dimensions are currently tentative value and to be updated based on site inspection.



Chalernchai Construction - Repair Irrigation,  
Roads Bridge and Homestead Sole Co.,Ltd

TITLE	NAME	SIGNATURE
PREPARED BY		
CHECKED BY		
APPROVED BY		



THE LAO PEOPLE'S DEMOCRATIC REPUBLIC  
MINISTRY OF PUBLIC WORKS AND TRANSPORT

THE PROJECT FOR CAPACITY DEVELOPMENT ON BRIDGE  
MAINTENANCE AND MANAGEMENT

DRAWING TITLE:  
GENERAL DRAWING OF BRIDGE REPAIR AND  
REINFORCEMENT OF NAMONE BRIDGE

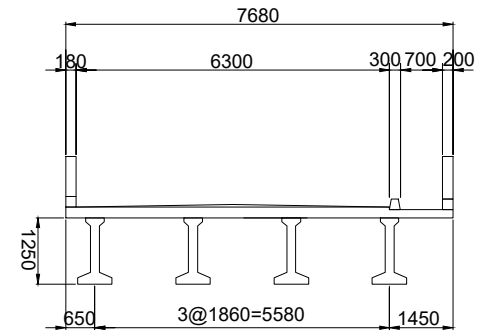
REV. No.	DATE	DESCRIPTION
01	2.May.2023	As-built Drawing
-		
-		
-		

SCALE:  
  
DRAWING No.:  
009

# GENERAL DRAWING OF BRIDGE REPAIR AND ROAD MARKING OF NAMONE BRIDGE

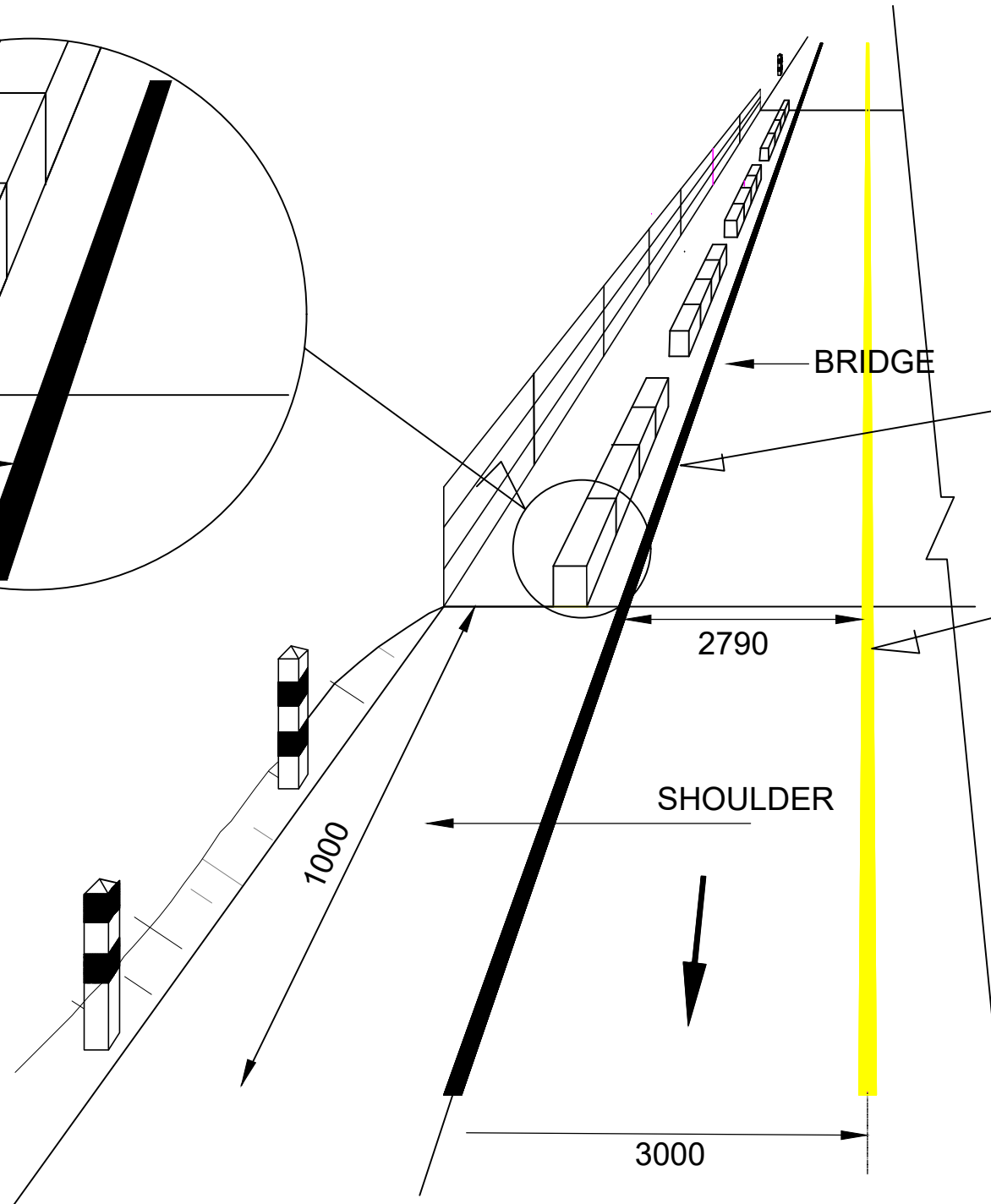
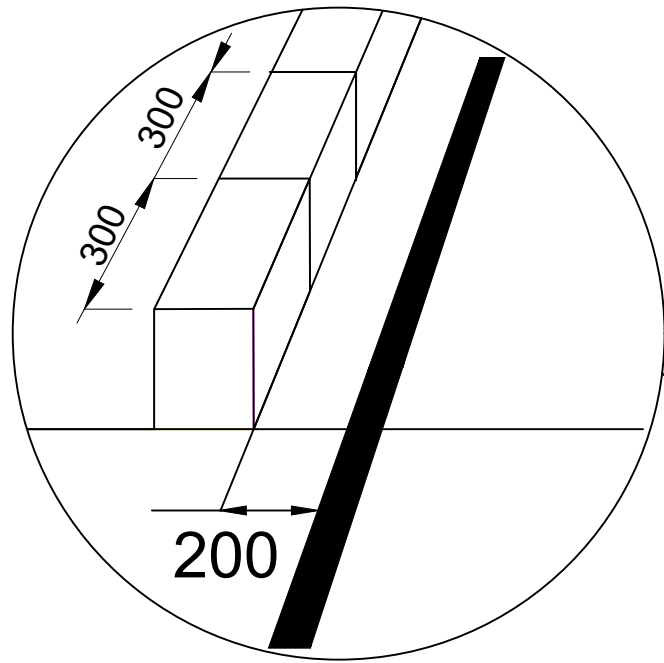
## Traffic Paint and Road Marking

Cross Section of Superstructure  
s=1:150



See Detail

Not to scale



Edge line marking  
(Solid white line width=150mm) for Road Markings on  
Bridge Surface and Approach Road

Center line marking  
(Solid yellow line width =150mm) for Road  
Markings on Bridge Surface and Approach Road

Item	Description	Unit	Quantity
1	Center line marking (Solid yellow line) for Road Markings on Bridge Surface	m <sup>2</sup>	6.90
2	Center line marking (Solid yellow line) for Road Markings on Approach Road	m <sup>2</sup>	1.65
3	Edge line marking (Solid white line) for Road Markings on Bridge Surface	m <sup>2</sup>	13.80
4	Edge line marking (Solid white line) for Road Markings on Approach Road	m <sup>2</sup>	3.30
Total of Solid yellow line			17.10 m <sup>2</sup>
Total of Solid white line			8.55 m <sup>2</sup>

Note: Dimensions are currently tentative value and to be updated based on site inspection.



Chalernchai Construction - Repair Irrigation,  
Roads Bridge and Homestead Sole Co.,Ltd

TITLE	NAME	SIGNATURE
PREPARED BY		
CHECKED BY		
APPROVED BY		



THE LAO PEOPLE'S DEMOCRATIC REPUBLIC  
MINISTRY OF PUBLIC WORKS AND TRANSPORT

THE PROJECT FOR CAPACITY DEVELOPMENT ON BRIDGE  
MAINTENANCE AND MANAGEMENT  
DRAWING TITLE:  
GENERAL DRAWING OF BRIDGE REPAIR AND  
ROAD MARKING OF NAMONE BRIDGE

REV. No.	DATE	DESCRIPTION	SCALE:
01	2.May.2023	As-built Drawing	
-			
-			
-			

DRAWING No.:  
010