

**WORKING PHOTOS
(NAMONE BRIDGE)**

Work photos Removal of Existing Pavement



Removal of Existing pavement work on Bridge Surface Right side
on 15th February 2023



Removal of Existing pavement work on Bridge Surface Right side
on 16th February 2023

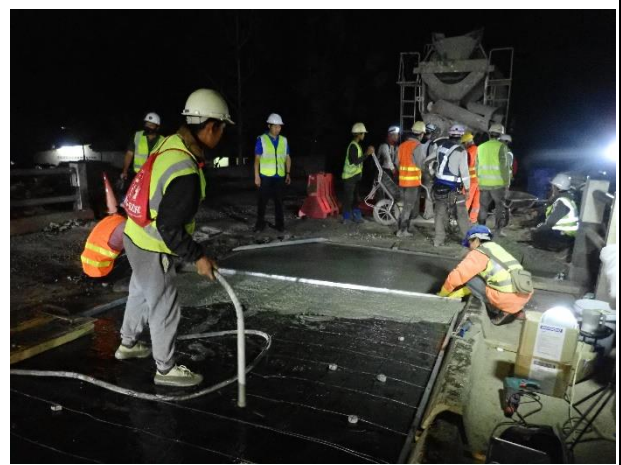


Removal of Existing pavement work on Bridge Surface Left side
on 16th February 2023

Work photos Casting New Pavement (CPJ)



Application of Primer cort and Glue on the Existing Bridge Surface
on 20th February 2023



Set up the Wire mesh and Compact Jet Concrete casting on Bridge Surface Span-2 R/S
on 20th February 2023. (W= 2.70m, L= 20.0m)



Application of Primer cort and Compact Jet Concrete casting on Bridge Surface Span1-2 R/S
on 21st February 2023. (W= 2.70m, L= 4.0m)

Work photos Casting New Pavement (CPJ)



Compact Jet Concrete casting on Bridge Surface Span 2 R/S
on 22nd February 2023. (W= 2.70m, L= 19.3 m)



Application of Primer cort and Bond on Bridge Surface Span 2 R/S
on 22nd February 2023. (W= 2.70m, L= 19.3 m)



Compact Jet Concrete casting on Bridge Surface Span 1 R/S and Span 2 L/S
on 23rd February 2023. (SP 1 R/S: W= 2.70m, L= 3.5m, SP 2 L/S: W= 3.25m, L= 16.55m)

Work photos Casting New Pavement (CPJ)



Compact Jet Concrete casting on Bridge Surface Span 1 - Span 2 L/S
on 24th February 2023. (SP 1 – SP 2 L/S: W= 3.25m, L= 17.90m)



Mixing Compact Jet Concrete casting
on 25th February 2023.



Compact Jet Concrete casting on Bridge Surface Span 1 L/S
on 25th February 2023. (SP 1 L/S: W= 3.25m, L= 11.95m)

Work photos Replacement of Expansion Joint



Installation of Expansion Joint (L= 3.65m) at A2 R/S
on 19-20th February 2023.



Installation of Expansion Joint (L= 3.65m) at A2 R/S
on 20th February 2023.



Installation of Expansion Joint (L= 3.65m) at P1 R/S
on 21st February 2023.

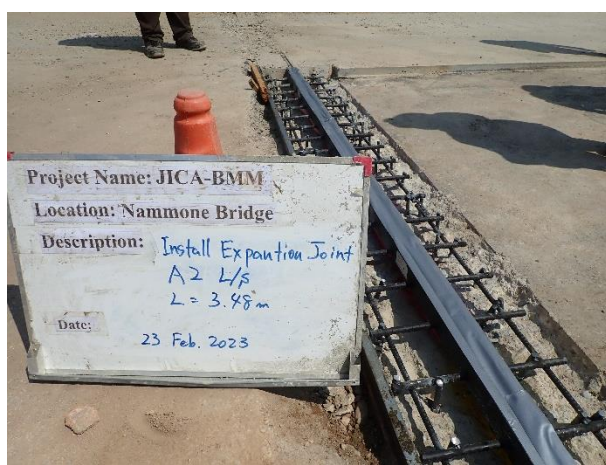
Work photos Replacement of Expansion Joint



Installation of Expansion Joint at A1 R/S and A2 L/S
on 22nd February 2023.



Installation of Expansion Joint (L= 3.65m) at A1 R/S
on 23rd February 2023.



Installation of Expansion Joint (L= 3.48m) at A2 L/S
on 23rd February 2023.

Work photos Replacement of Expansion Joint



Installation of Expansion Joint at P1 L/S and A1 L/S
on 24th February 2023.



Installation of Expansion Joint (L= 3.46 m) at P1 L/S
on 24th February 2023.



Installation of Expansion Joint (L= 3.49 m) at A1 L/S
on 25th February 2023.

Work photos Repair Exposed Hole



Concrete removal work
on 17th February 2023.



Concrete removal work
on 17th February 2023.



Install additional Reinforcing bar and Formwork
on 18-19th February 2023.

Work photos Repair Exposed Hole



Inspection for Reinforcing bar and Formwork for the Expose area on Existing Deck Slab on 19th February 2023. (L= 3.00m, W= 1.70m, H= 0.17 – 0.24m)



Concrete casting for for the Expose area on Existing Deck Slab on 20th February 2023. (Trial Mix of Compact Jet Concrete; CPJ 1.05m³)



Concrete casting for for the Expose area on Existing Deck Slab on 20th February 2023. (Trial Mix of Compact Jet Concrete; CPJ 1.05m³)