

**WORKING PHOTOS
(XE-BANGNOUAN BRIDGE)**

Work photos Removal of Existing Pavement



Removal of Existing pavement work on Bridge Surface
on 25-30th November 2022



Removal of Existing pavement work on Approach Road Left side
on 15-17th December 2022



Removal of Existing pavement work on Approach Road Right side
on 30 January -1st February 2023

Work photos Casting New Pavement



Asphalt pavement work on Approach road A1 R/S
on 6th April 2023



Asphalt pavement work on Bridge Surface R/S
on 6th April 2023



Asphalt pavement work on Bridge Surface R/S
on 6th April 2023

Work photos Casting New Pavement



Asphalt pavement work on Approach road A2 R/S
on 7th April 2023



Asphalt pavement work on Bridge Surface L/S
on 7th April 2023



Asphalt pavement work on Bridge Surface L/S
on 7th April 2023

Work photos Casting New Pavement



Asphalt pavement work on Approach road A1 L/S
on 7th April 2023



Completion of Asphalt pavement work on Bridge Surface 0 – 80 m from A1 side
on 8th April 2023



Completion of Asphalt pavement work on Bridge Surface 80 – 140 m from A1 side
on 8th April 2023

Work photos Casting New Pavement



Completion of Asphalt pavement work on Approach road A1 & A2
on 8th April 2023



Completion of Asphalt pavement work at near the Expansion joint
on 8th April 2023

Work photos Waterproofing



Cleaning work on Bridge Surface L/S
on 1st April 2023



Apply Tack Coat (CRS-2) on Bridge Surface L/S
on 1st April 2023



Apply Tack Coat (CRS-2) on Bridge Surface L/S
on 1st April 2023

Work photos Waterproofing



Cleaning work on Bridge Surface R/S
on 3rd April 2023



Apply Tack Coat (CRS-2) on Bridge Surface R/S
on 3rd April 2023



Apply Tack Coat (CRS-2) on Bridge Surface R/S
on 3rd April 2023

Work photos Waterproofing



JICA BMM PROJECT
Location: XE BANG NOUAN
Description: Cleaning Surface
Tack Coat CRS-2 8%
Date: 6 Apr 2023



Cleaning Surface Tack coat (CRS-2) on Bridge Surface R/S
on 6th April 2023



JICA BMM PROJECT
Location: XE BANG NOUAN
Description: Waterproof Work 8%
Spray AC 80/100
Date: 6 Apr 2023



JICA BMM PROJECT
Location: XE BANG NOUAN
Description: Waterproof Work 8%
Spray AC 80/100
1.0-1.5 kg/m²
Date: 6 Apr 2023

Splaying Bitumen AC 80/100 on Bridge Surface R/S
on 6th April 2023



JICA BMM PROJECT
Location: XE BANG NOUAN
Description: Waterproof Work 8%
Quartz Sand
0.7 kg/m²
Date: 6 Apr 2023



JICA BMM PROJECT
Location: XE BANG NOUAN
Description: Waterproof Work 8%
Quartz Sand
0.7 kg/m²
Date: 6 Apr 2023

Sprinkle Quartz sand on Bridge Surface R/S
on 6th April 2023

Work photos Waterproofing



Cleaning Surface Tack coat (CRS-2) on Bridge Surface L/S
on 7th April 2023



Splaying Bitumen AC 80/100 on Bridge Surface L/S
on 7th April 2023



Cleaning and Apply EPS on Bridge Surface Footpath B/S
on 24th April 2023

Work photos Waterproofing



Apply Tack coat (CRS-2) on Bridge Surface Footpath B/S
on 25th April 2023



Apply Tack coat (CRS-2) and Sprinkle Quartz sand on Bridge Surface L/S
on 25th April 2023

Work photos Repainting work A1 side



Scaffolding assembly and Cleaning work for the Steel Surface on 1-5th March 2023.
Steel Girder web 3.00m, flange 7.00m, Steel Member, Handrail



Preparation of the Steel Surface and Cleaning on 1-5th March 2023.
Steel Girder web 3.00m, flange 7.00m, Steel Member, Handrail



On-site workshop for Painting work on 3rd March 2023.
Steel Girder web 3.00m, flange 7.00m, Steel Member, Handrail

Work photos Repainting work A1 side



Preparation of the Steel Surface and Cleaning on 11th March 2023.

Steel Girder web 3.00m, flange 7.00m, Steel Member



Painting work with TERMARUST on 10th March 2023.

Steel Girder web 3.00m, flange 7.00m, Steel Member



Painting work with TERMARUST on 10th March 2023.

Steel Girder web 3.00m, flange 7.00m, Steel Member

Work photos Repainting work A1 side



Painting work with TERMARUST on 11-12th March 2023.
Steel Girder web 3.00m, flange 7.00m, Steel Member



Painting work with TERMARUST on 19-20th March 2023.
Handrail 145m, Both side



Completion of repainting work A1 side on 19th March 2023.
Steel Girder web 3.00m, flange 7.00m, Steel Member

Work photos Repainting work A2 side



Preparation of the Steel Surface and Cleaning on 14th March 2023.
Steel Girder web 3.00m, flange 7.00m, Steel Member, Handrail



Preparation of the Steel Surface and Cleaning on 14th March 2023.
Steel Girder web 3.00m, flange 7.00m, Steel Member, Handrail



Preparation of the Steel Surface and Cleaning on 15th March 2023.
Steel Girder web 3.00m, flange 7.00m, Steel Member, Handrail

Work photos Repainting work A2 side



Under coat Patina Lock Galva PL-G on 16th March 2023.
Steel Girder web 3.00m, flange 7.00m, Steel Member, Handrail



Under coat Patina Lock Galva PL-G on 16th March 2023.
Steel Girder web 3.00m, flange 7.00m, Steel Member, Handrail



Under coat Patina Lock Galva PL-G on 16th March 2023.
Steel Girder web 3.00m, flange 7.00m, Steel Member, Handrail

Work photos Repainting work A2 side



Under coat Patina Lock Galva PL-G on 16th March 2023.
Steel Girder web 3.00m, flange 7.00m, Steel Member, Handrail



Under coat Patina Lock Galva PL-G on 16th March 2023.
Steel Girder web 3.00m, flange 7.00m, Steel Member, Handrail



Second coat Patina Lock PL-MET on 17th March 2023.
Steel Girder web 3.00m, flange 7.00m, Steel Member, Handrail

Work photos Repainting work A2 side



Second coat Patina Lock PL-MET on 17th March 2023.
Steel Girder web 3.00m, flange 7.00m, Steel Member, Handrail



Second coat Patina Lock PL-MET on 17th March 2023.
Steel Girder web 3.00m, flange 7.00m, Steel Member, Handrail



Second coat Patina Lock PL-MET on 17th March 2023.
Steel Girder web 3.00m, flange 7.00m, Steel Member, Handrail

Work photos Repainting work A2 side



Second coat Patina Lock PL-MET on 17th March 2023.

Steel Girder web 3.00m, flange 7.00m, Steel Member, Handrail



Top coat Patina Lock PL-MFT on 18th March 2023.

Steel Girder web 3.00m, flange 7.00m, Steel Member, Handrail



Top coat Patina Lock PL-MFT on 18th March 2023.

Steel Girder web 3.00m, flange 7.00m, Steel Member, Handrail

Work photos Repainting work A2 side



Top coat Patina Lock PL-MFT on 18th March 2023.

Steel Girder web 3.00m, flange 7.00m, Steel Member, Handrail



Completion of repainting work A2 side on 19th March 2023.

Steel Girder web 3.00m, flange 7.00m, Steel Member, Handrail



Completion of repainting work A2 side on 19th March 2023.

Steel Girder web 3.00m, flange 7.00m, Steel Member, Handrail

Work photos Replacement of Expansion Joint A1 side



Assembly of Expansion Joint at Abutment 1 Right side
on 2nd March 2023



Installation of Expansion Joint at Abutment 1 Right side
on 3rd March 2023



Installation of Expansion Joint at Abutment 1 Right side
on 5th March 2023

Work photos Replacement of Expansion Joint A1 side



**Casting Concrete of Expansion Joint at Abutment 1 Right side
on 5th March 2023**



**Concrete Mixing (Cement 50kg, Water 17.52kg, Fine Agg. 55.9kg, Course Agg. 103.33kg)
with Admixture Sika plast-204L 0.48kg, Slump 13.0cm, Temperature 32°C**



**Portland Cement and Admixture Sika plast-204L
on 5th March 2023**

Work photos Replacement of Expansion Joint A1 side



Assembly of Expansion Joint and cleaning work at Abutment 1 Left site
on 8-9th March 2023



Installation of Expansion Joint at Abutment 1 Left site
on 9th March 2023



Installation of Expansion Joint and Formwork at Abutment 1 Left site
on 13th March 2023

Work photos Replacement of Expansion Joint A1 side



Casting Concrete of Expansion Joint at Abutment 1 Left site
on 13th March 2023



Completion Replacement of Expansion Joint at Abutment 1 site
on 14th March 2023

Work photos Replacement of Expansion Joint A2 side



Assembly of Expansion Joint and setting at Abutment 2 Right side
on 3-4th March 2023



Installation of Expansion Joint at Abutment 2 Right side
on 4th March 2023

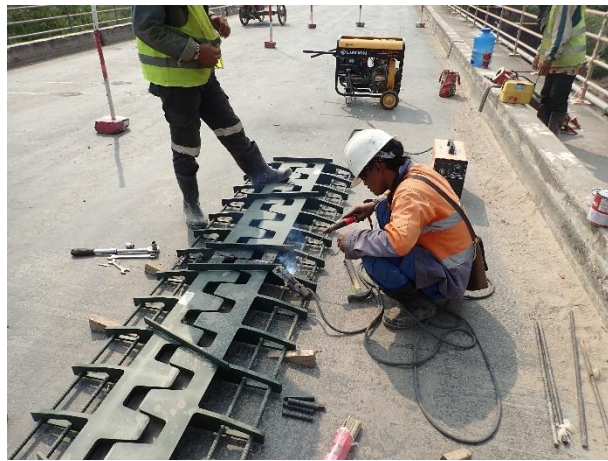


Installation of Expansion Joint at Abutment 2 Right side
on 5th March 2023

Work photos Replacement of Expansion Joint A2 side



Casting Concrete of Expansion Joint at Abutment 2 Right side
on 5th March 2023



Assembly of Expansion Joint and setting at Abutment 2 Left side
on 9-10th March 2023



Installation of Expansion Joint at Abutment 2 Left side
on 5th March 2023

Work photos Replacement of Expansion Joint A2 side



Installation of Expansion Joint and Formwork at Abutment 2 Left side
on 13th March 2023



Casting Concrete of Expansion Joint at Abutment 2 Left side
on 13th March 2023



Concrete Mixing (Cement 25kg, Water 8.76kg, Fine Agg. 28.0kg, Course Agg. 51.66kg)
with Admixture Sika plast-204L 0.24kg, Slump 18.5cm

Work photos Road Marking



Cleaning and Preparation of Road Marking on Bridge Surface and Approach Road
on 21st April 2023



Edge line marking (Solid white line W=15cm) on Bridge Surface and Approach Road
on 21st April 2023



Edge line marking (Solid white line W=15cm) on Bridge Surface and Approach Road
on 21st April 2023

Work photos Road Marking



Center line marking (Solid yellow line W=15cm) on Bridge Surface and Approach Road
on 21st April 2023



Completion of Road Marking on Bridge Surface and Approach Road
on 21st April 2023

Work photos Concrete Corbel A1 L/S



Foundation compaction work under the Concrete Corbel on 21st December 2022.



Leveling concrete under the Concrete Corbel on 23rd December 2022.

L=600mm, W=4650mm, H=100mm



Concrete Drilling work for anchor holes on 24-28th December 2022.

Diameter 20mm, Depth 250mm

Work photos Concrete Corbel A1 L/S



Anchor rebar insert to Existing concrete wall on 28th December 2022.

Upper side D16 x19 pieces, Lower side D16 x19 pieces



Re-bar work on 28th December 2022.

19-D16x1240, 19-D16x880, 6-D14x4500, Anchor bar 14-D16x500



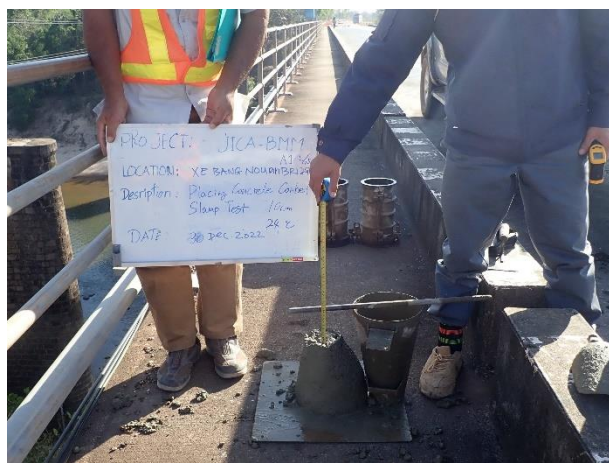
Form work on 29-30th December 2022.

L=500mm, W=4650mm, H=800mm

Work photos Concrete Corbel A1 L/S



Concrete Casting for Concrete Corbel Abutment 1 Left side
on 30th December 2022.



Concrete Casting for Concrete Corbel Abutment 1 Left side on 30th December 2022.
Slump test 10.0 cm, Concrete Temperature 24 °C



Inspection for Concrete Corbel Abutment 1 Left side on 3rd January 2023.

L=505mm, W=4650mm, H=800mm

Work photos Backfill A1 L/S



Completion of Excavation work under the Approach slab on 20th December 2022.

Upper: L=6.00m, W=4.80m, Lower: L=5.50m W=4.65m, H₁=1.75m, H₂=1.55m



DCP test and FDT conducted on 19th December 2022.



Backfilling by Soil cement 1st Layer on 4th January 2023.

Base course 5.0 m³ + Portland Cement 500kg

Work photos Backfill A1 L/S



Backfilling by Soil cement 2nd Layer on 4th January 2023.

Base course 5.0 m³ + Portland Cement 500kg



Backfilling by Soil cement 2nd Layer on 4th January 2023.

Base course 5.0 m³ + Portland Cement 500kg



Backfilling by Soil cement 3rd Layer on 4th January 2023.

Base course 5.0 m³ + Portland Cement 500kg (Take a Test Sample)

Work photos Backfill A1 L/S



Backfilling by Crushed stone 4th Layer on 4th January 2023.

Base course 5.5 m³



Backfilling by Crushed stone 4th Layer on 4th January 2023.

Base course 5.5 m³

Work photos Concrete Parapet A1 L/S



Inspection for Anchor holes for Parapet work on 6th January 2023.

Deep 250mm, 19x2= 38 holes



Install Anchor bar for Parapet work on 6th January 2023.

Deep 240mm, 19x2= 38 bar



Inspection for Re-bar work on 6th January 2023.

19-D16 x 2, 3-D14 4400mm

Work photos Concrete Parapet A1 L/S



Inspection for Form work on 6th January 2023.

L= 400mm, W= 4650mm, H= 230 – 350mm



Concrete casting work on 6th January 2023.

Slump test 12.0 cm, Concrete Temperature 27.5 °C



Concrete casting work on 6th January 2023.

Slump test 12.0 cm, Concrete Temperature 27.5 °C