

Work photos Approach slab A1 L/S



Leveling concrete under the Approach slab on 4th January 2023.

L= 4600mm, W= 4650mm, H= 100mm

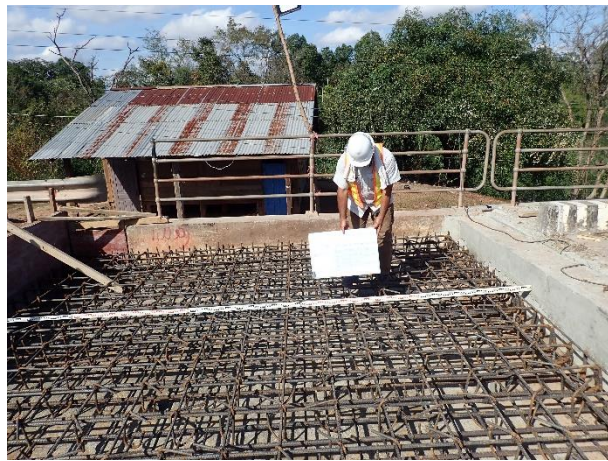


Application Bitumen 80/100 as filling material between Corbel and Approach slab on 10th January 2023.



Re-bar work on 11-12th January 2023.

Work photos Approach slab A1 L/S



Inspection for Re-bar work on 13th January 2023.

Upper: 17-D16@300mm, 16-D20@300mm Lower: 27-D25@170mm, 33-D16@150mm



Inspection for Re-bar work on 13th January 2023.

Upper: 17-D16@300mm, 16-D20@300mm Lower: 27-D25@170mm, 33-D16@150mm



Inspection for Form work on 13th January 2023.

L= 5000mm, W= 4650mm, H= 400mm

Work photos Approach slab A1 L/S



Anchor cap setting on 14th January 2023.

Dia. 33.5mm, L= 210mm, Grease filling



Sleeve pipe setting on 14th January 2023.

Dia. 33.5mm, L= 500mm



Filling material on 15th January 2023.

Sponge tight t= 10mm

Work photos Approach slab A1 L/S



Concrete casting on 15th January 2023.



Concrete casting on 15th January 2023.



Concrete casting on 15th January 2023.

Slump test 8.5cm, Temp. 31.0 °C

Work photos Approach slab A1 L/S



Completion of Approach slab work on 17th January 2023.

L= 5000mm, W= 4650mm, H= 390mm



Completion of Approach slab work on 17th January 2023.

L= 5000mm, W= 4650mm, H= 390mm



Back filling behind of Approach slab on 17th January 2023.

Base Course 400mm

Work photos Concrete Corbel A1 R/S



Foundation compaction work under the Concrete Corbel and Formwork on 3rd February 2023.



Leveling concrete under the Concrete Corbel on 3rd February 2023.

L=600mm, W=4650mm, H=100mm



Concrete Drilling work for anchor holes on 7-8th February 2023.

Diameter 20mm, Depth 250mm

Work photos Concrete Corbel A1 R/S



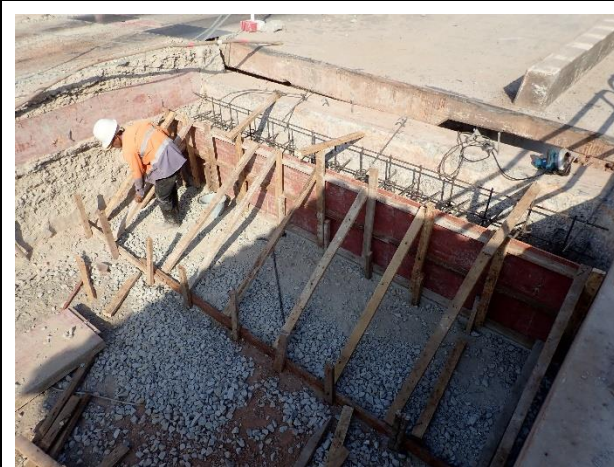
Anchor rebar insert to Existing concrete wall on 8th February 2023.

Upper side D16 x19 pieces, Lower side D16 x19 pieces



Re-bar work on 9th February 2023.

19-D16x1240, 19-D16x880, 6-D14x4500, Anchor bar 14-D16x500



Form work on 9-10th February 2023.

L=500mm, W=4650mm, H=800mm

Work photos Concrete Corbel A1 R/S



Concrete Casting for Concrete Corbel Abutment 1 Right side
on 10th February 2023.



Concrete Casting for Concrete Corbel Abutment 1 Right side on 10th February 2023.
Slump test 16.5 cm, Concrete Temperature 35 °C



Inspection for Concrete Corbel Abutment 1 Right side on 11th February 2023.
L=520mm, W=4650mm, H=800mm

Work photos Backfill A1 R/S



Compaction work under the Approach slab on 31st January 2023.



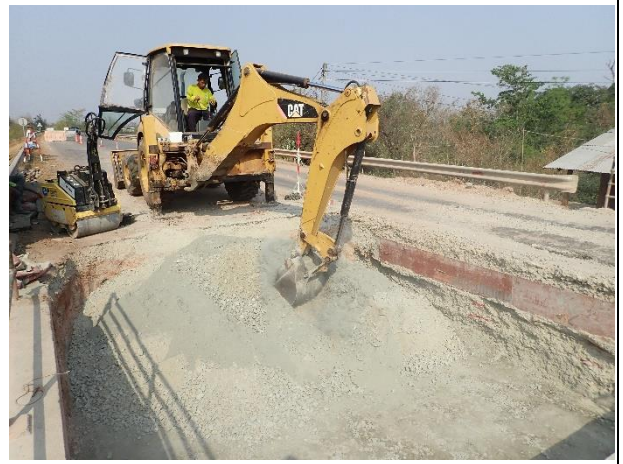
FDT conducted on 2nd February 2023.



Backfilling by Soil cement 1st Layer on 12th February 2023.

Base course 5.0 m³ + Portland Cement 500kg

Work photos Backfill A1 R/S



Backfilling by Soil cement 2nd Layer on 12th February 2023.

Base course 5.0 m³ + Portland Cement 500kg



Backfilling by Soil cement 2nd Layer on 12th February 2023.

Base course 5.0 m³ + Portland Cement 500kg



Backfilling by Soil cement 3rd Layer on 12th February 2023.

Base course 5.0 m³ + Portland Cement 500kg (Take a Test Sample)

Work photos Backfill A1 R/S



Backfilling by Crushed stone 4th Layer on 12th February 2023.

Base course 5.5 m³



Backfilling by Crushed stone 4th Layer on 12th February 2023.

Base course 5.5 m³

Work photos Concrete Parapet A1 R/S



Inspection for Anchor holes for Parapet work on 15th February 2023.

Deep 250mm, 19x2= 38 holes



Install Anchor bar for Parapet work on 15th February 2023.

Deep 240mm, 19x2= 38 bar



Inspection for Re-bar work on 15th February 2023.

19-D16 x 2, 3-D14 4400mm

Work photos Concrete Parapet A1 R/S



Inspection for Form work on 16th February 2023.

L= 400mm, W= 4650mm, H= 230 – 350mm



Concrete casting work on 17th February 2023.

Work photos Approach slab A1 R/S



Leveling concrete under the Approach slab on 16th February 2023.

L= 4600mm, W= 4650mm, H= 100mm



Application Bitumen 80/100 as filling material between Corbel and Approach slab on 18th February 2023.



Re-bar work on 20-21st February 2023.

Work photos Approach slab A1 R/S



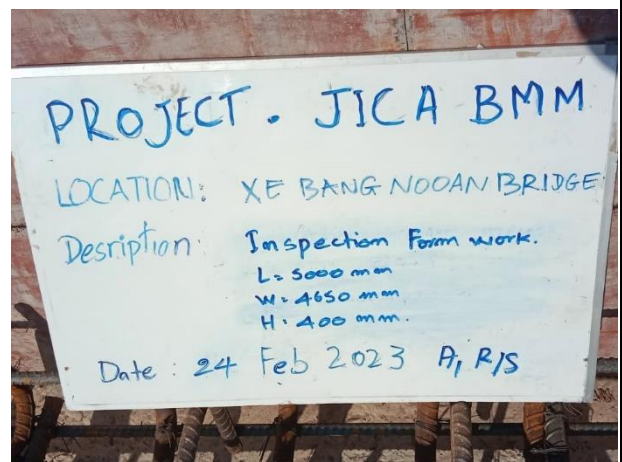
Inspection for Re-bar work on 24th February 2023.

Upper: 17-D16@300mm, 16-D20@300mm Lower: 27-D25@170mm, 33-D16@150mm



Inspection for Re-bar work on 24th February 2023.

Upper: 17-D16@300mm, 16-D20@300mm Lower: 27-D25@170mm, 33-D16@150mm



Inspection for Form work on 24th February 2023.

L= 5000mm, W= 4650mm, H= 400mm

Work photos Approach slab A1 R/S



Anchor cap setting on 22nd February 2023.

Dia. 33.5mm, L= 210mm, Grease filling



Connection bar setting on 24th February 2023.

5-D25@1,000, L= 1,000mm



Filling material on 24th February 2023.

Sponge tight t= 10mm

Work photos Approach slab A1 R/S



Concrete casting on 24th February 2023.



Completion of Approach slab work on 25th February 2023.

L= 5000mm, W= 4650mm, H= 400mm



Completion of Approach slab work on 25th February 2023.

L= 5000mm, W= 4650mm, H= 400mm

Work photos Concrete Corbel A2 L/S



Leveling concrete under the Concrete Corbel on 24th December 2022.

L=600mm, W=4650mm, H=100mm



Leveling concrete under the Concrete Corbel on 24th December 2022.

L=600mm, W=4650mm, H=100mm



Concrete Drilling work for anchor holes on 23-29th December 2022.

Diameter 20mm, Depth 250mm

Work photos Concrete Corbel A2 L/S



Anchor rebar insert to Existing concrete wall on 30th December 2022.

Upper side D16 x19 pieces, Lower side D16 x19 pieces



Re-bar work on 31st December 2022.

19-D16x1240, 19-D16x880, 6-D14x4500, Anchor bar 14-D16x500



Form work on 3rd January 2023.

L=500mm, W=4650mm, H=800mm

Work photos Concrete Corbel A2 L/S



Concrete Casting for Concrete Corbel Abutment 2 Left side
on 3rd January 2023.



Concrete Casting for Concrete Corbel Abutment 2 Left side on 3rd January 2023.
Slump test 11.5 cm, Concrete Temperature 30 °C



Inspection for Concrete Corbel Abutment 2 Left side on 5th January 2023.
L=505mm, W=4650mm, H=800mm

Work photos Backfill A2 L/S



Completion of Excavation work under the Approach slab on 20th December 2022.
Upper: L=6.00m, W=4.80m, Lower: L=5.50m W=4.65m, H₁=1.75m, H₂=1.55m



DCP test and FDT conducted on 19th December 2022.



Backfilling by Soil cement 1st Layer on 4th January 2023.
Base course 5.0 m³ + Portland Cement 500kg

Work photos Backfill A2 L/S



Backfilling by Soil cement 2nd Layer on 4th January 2023.

Base course 5.0 m³ + Portland Cement 500kg



Backfilling by Soil cement 2nd Layer on 4th January 2023.

Base course 5.0 m³ + Portland Cement 500kg



Backfilling by Soil cement 3rd Layer on 4th January 2023.

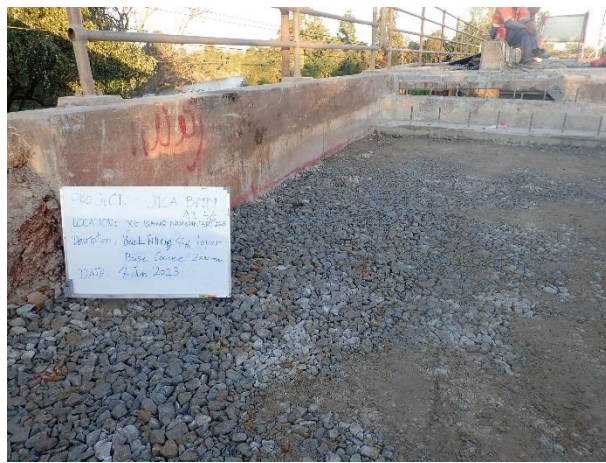
Base course 5.0 m³ + Portland Cement 500kg (Take a Test Sample)

Work photos Backfill A2 L/S



Backfilling by Crushed stone 4th Layer on 4th January 2023.

Base course 5.5 m³



Backfilling by Crushed stone 4th Layer on 4th January 2023.

Base course 5.5 m³

Work photos Concrete Parapet A2 L/S



Inspection for Anchor holes for Parapet work on 8th January 2023.

Deep 250mm, 19x2= 38 holes



Install Anchor bar for Parapet work on 8th January 2023.

Deep 240mm, 19x2= 38 bar



Inspection for Re-bar and Form work on 9th January 2023.

19-D16 x 2, 3-D14 4400mm, L= 400mm, W= 4650mm, H= 230 – 350mm

Work photos Concrete Parapet A2 L/S



Concrete casting work on 9th January 2023.
Slump test 9.0 cm, Concrete Temperature 34.0 °C



Concrete casting work on 9th January 2023.
Slump test 9.0 cm, Concrete Temperature 34.0 °C

Work photos Approach slab A2 L/S



Leveling concrete under the Approach slab on 9th January 2023.

L= 4600mm, W= 4650mm, H= 100mm



Application Bitumen 80/100 as filling material between Corbel and Approach slab on 13th January 2023.



Re-bar work on 13th January 2023.

Lower: 27-D25@170mm, 33-D16@150mm

Work photos Approach slab A2 L/S



Inspection for Re-bar work on 14th January 2023.

Upper: 17-D16@300mm, 16-D20@300mm



Inspection for Re-bar work on 14th January 2023.

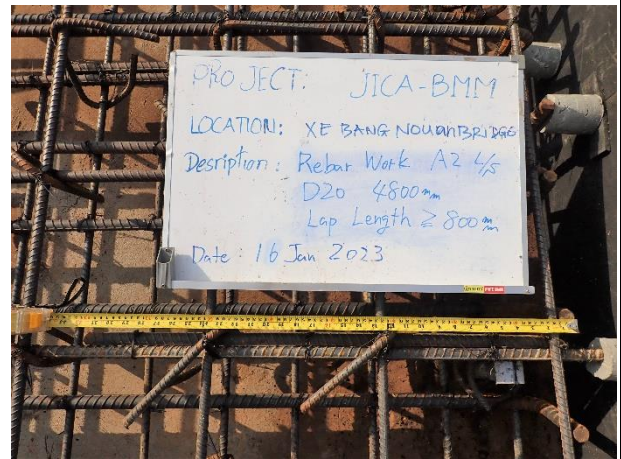
Upper: 17-D16@300mm, 16-D20@300mm Lower: 27-D25@170mm, 33-D16@150mm



Inspection for Form work on 14th January 2023.

L= 5000mm, W= 4650mm, H= 400mm

Work photos Approach slab A2 L/S



Inspection for Re-bar work on 13-16th January 2023.

Lap Length, Upper D25 \geq 1,000mm, Lower D20 \geq 800mm



Anchor Cap and Sleeve pipe setting on 14th January 2023.

Anchor Cap: Dia. 33.5mm, L= 210mm ,Sleeve pipe: Dia. 33.5mm, L= 500mm



Filling material on 16th January 2023.

Sponge tight $t=$ 10mm

Work photos Approach slab A2 L/S



Concrete casting on 16th January 2023.



Concrete casting on 16th January 2023.

Slump test 18.5cm, Temp. 27.5 °C



Completion of Approach slab work on 18th January 2023.

L= 5000mm, W= 4650mm, H= 400mm

Work photos Approach slab A2 L/S



Completion of Approach slab work on 18th January 2023.

L= 5000mm, W= 4650mm, H= 400mm



Completion of Back filling behind of Approach slab on 22nd January 2023.

Base Course 400mm

Work photos Concrete Corbel A2 R/S



Leveling concrete under the Concrete Corbel on 3rd February 2023.

L=600mm, W=4650mm, H=100mm



Leveling concrete under the Concrete Corbel on 3rd February 2023.

L=600mm, W=4650mm, H=100mm



Concrete Drilling work for anchor holes on 8-9th February 2023.

Diameter 20mm, Depth 250mm

Work photos Concrete Corbel A2 R/S



Anchor rebar insert to Existing concrete wall on 9th February 2023.

Upper side D16 x19 pieces, Lower side D16 x19 pieces



Re-bar work on 9th February 2023.

19-D16x1240, 19-D16x880, 6-D14x4500, Anchor bar 14-D16x500



Form work on 10th February 2023.

L=500mm, W=4650mm, H=800mm

Work photos Concrete Corbel A2 R/S



Concrete Casting for Concrete Corbel Abutment 2 Right side
on 10th February 2023.



Inspection for Concrete Corbel Abutment 2 Right side on 11th February 2023.
L=500mm, W=4650mm, H=805mm

Work photos Backfill A2 R/S



Excavation and Compaction work under the Approach slab on 1st February 2023.



FDT conducted on 2nd February 2023.



Backfilling by Soil cement 1st Layer on 14th February 2023.

Base course 5.0 m³ + Portland Cement 500kg

Work photos Backfill A2 R/S



Backfilling by Soil cement 2nd Layer on 14th February 2023.
Base course 5.0 m³ + Portland Cement 500kg(Take a Test Sample)



Backfilling by Soil cement 3rd Layer and Crushed stone 4th Layer on 14th February 2023.
Base course 5.0 m³ + Portland Cement 500kg, Base course 5.5 m³



Completion of Backfill work on 14th February 2023.

Work photos Concrete Parapet A2 R/S



Inspection for Anchor holes for Parapet work on 16th February 2023.

Deep 250mm, 19x2= 38 holes



Inspection for Re-bar work on 16th February 2023.

19-D16 x 2, 3-D14 4400mm



Inspection for Form work on 17th February 2023.

L= 400mm, W= 4650mm, H= 230 – 350mm

Work photos Concrete Parapet A2 R/S



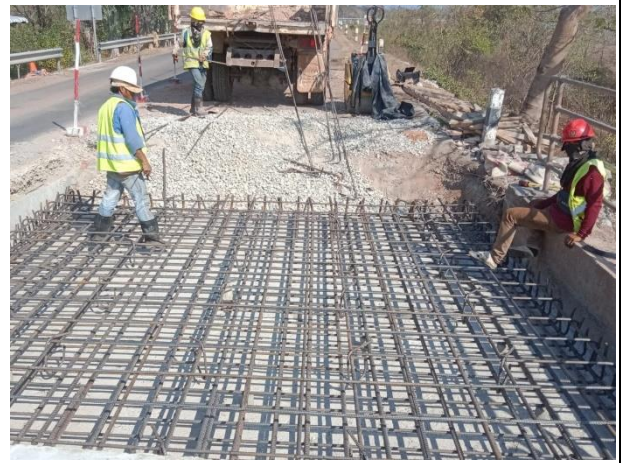
Concrete casting work on 17th February 2023.

Work photos Approach slab A2 R/S



Leveling concrete under the Approach slab on 17th February 2023.

L= 4600mm, W= 4650mm, H= 100mm



Re-bar work on 21st February 2023.



Inspection for Re-bar work on 24th February 2023.

Upper: 17-D16@300mm, 16-D20@300mm Lower: 27-D25@170mm, 33-D16@150mm

Work photos Approach slab A2 R/S



Inspection for Form work and Anchor cap setting on 24th February 2023.

L= 5000mm, W= 4650mm, H= 400mm



Filling material on 24th February 2023.

Sponge tight $t= 10\text{mm}$



Inspection for Form work on 24th February 2023.

L= 5000mm, W= 4650mm, H= 400mm

Work photos Approach slab A2 R/S



Completion of Approach slab work on 25th February 2023.

L= 5000mm, W= 4650mm, H= 400mm



Completion of Approach slab work on 25th February 2023.

L= 5000mm, W= 4650mm, H= 400mm